

Product datasheet

Anti-Kallikrein 2 antibody [EPR6676] ab124899

Recombinant RabMAb

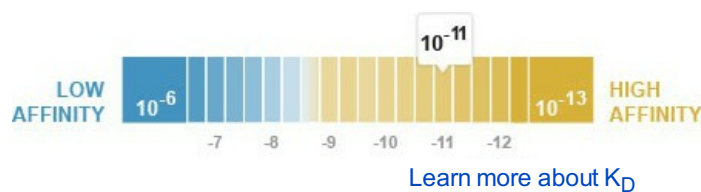
2 Images

Overview

Product name	Anti-Kallikrein 2 antibody [EPR6676]
Description	Rabbit monoclonal [EPR6676] to Kallikrein 2
Tested applications	Suitable for: WB, ICC/IF Unsuitable for: Flow Cyt, IHC-P or IP
Species reactivity	Reacts with: Mouse, Rat, Human
Immunogen	Synthetic peptide corresponding to residues in Human Kallikrein 2.
Positive control	LnCaP, MOLT4, Human seminoma and PC3 lysates.
General notes	This product is a recombinant rabbit monoclonal antibody. Our RabMAb [®] technology is a patented hybridoma-based technology for making rabbit monoclonal antibodies. For details on our patents, please refer to RabMAb[®] patents

Properties

Form	Liquid
Storage instructions	Shipped at 4°C. Store at -20°C. Stable for 12 months at -20°C.
Dissociation constant (K_D)	K _D = 8.78 x 10 ⁻¹¹ M



Storage buffer	pH: 7.20 Preservative: 0.01% Sodium azide Constituents: 49% PBS, 50% Glycerol, 0.05% BSA
Purity	Tissue culture supernatant
Clonality	Monoclonal
Clone number	EPR6676
Isotype	IgG

Applications

Our [Abpromise guarantee](#) covers the use of **ab124899** in the following tested applications.

The application notes include recommended starting dilutions; optimal dilutions/concentrations should be determined by the end user.

Application	Abreviews	Notes
WB		1/1000 - 1/10000. Detects a band of approximately 33 kDa (predicted molecular weight: 29 kDa).
ICC/IF		1/50 - 1/100.

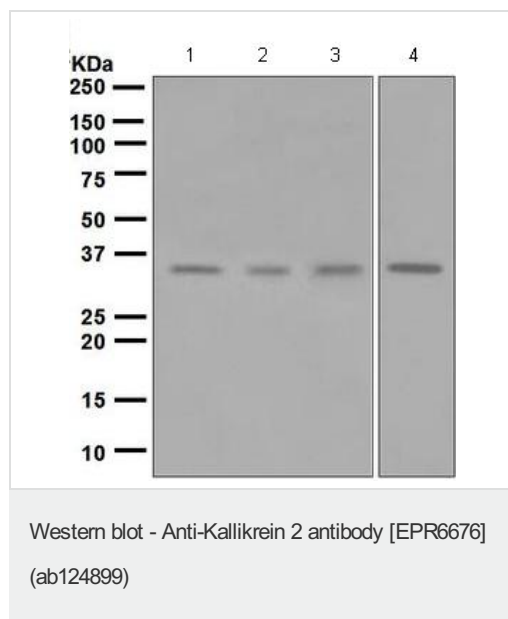
Application notes Is unsuitable for Flow Cyt, IHC-P or IP.

Target

Function Glandular kallikreins cleave Met-Lys and Arg-Ser bonds in kininogen to release Lys-bradykinin.

Sequence similarities Belongs to the peptidase S1 family. Kallikrein subfamily.
Contains 1 peptidase S1 domain.

Images



All lanes : Anti-Kallikrein 2 antibody
[EPR6676] (ab124899) at 1/1000 dilution

Lane 1 : LnCaP lysate

Lane 2 : MOLT4 lysate

Lane 3 : Human seminoma lysate

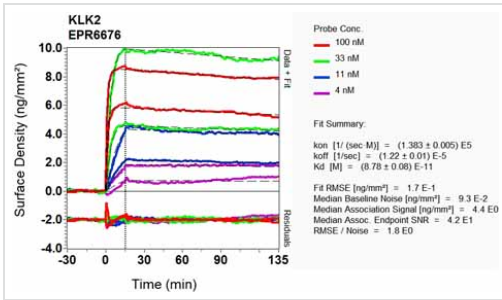
Lane 4 : PC3 lysate

Lysates/proteins at 10 µg per lane.

Secondary

Goat anti-Rabbit HRP at 1/2000 dilution

Predicted band size : 29 kDa



Other-Anti-Kallikrein 2 antibody [EPR6676]
(ab124899)

Equilibrium disassociation constant (K_D)

Learn more about K_D

[Click here to learn more about \$K_D\$](#)

Please note: All products are "FOR RESEARCH USE ONLY AND ARE NOT INTENDED FOR DIAGNOSTIC OR THERAPEUTIC USE"

Our Abpromise to you: Quality guaranteed and expert technical support

- Replacement or refund for products not performing as stated on the datasheet
- Valid for 12 months from date of delivery
- Response to your inquiry within 24 hours
- We provide support in Chinese, English, French, German, Japanese and Spanish
- Extensive multi-media technical resources to help you
- We investigate all quality concerns to ensure our products perform to the highest standards

If the product does not perform as described on this datasheet, we will offer a refund or replacement. For full details of the Abpromise, please visit <http://www.abcam.com/abpromise> or contact our technical team.

Terms and conditions

- Guarantee only valid for products bought direct from Abcam or one of our authorized distributors