

Product datasheet

Anti-LAMP1 antibody ab19294

★★★★★ 2 Abreviews 4 References 2 Images

Overview

Product name	Anti-LAMP1 antibody
Description	Rabbit polyclonal to LAMP1
Tested applications	Suitable for: IHC-P, ICC/IF
Species reactivity	Reacts with: Human Predicted to work with: Mouse, Rat
Immunogen	Synthetic peptide: C-KRSHAGYQTI , corresponding to amino acids 407-416 of Human LAMP1 Run BLAST with Run BLAST with
Positive control	HeLa cells. IHC-P: FFPE human lung tissue sections.

Properties

Form	Liquid
Storage instructions	Shipped at 4°C. Upon delivery aliquot and store at -20°C. Avoid freeze / thaw cycles.
Storage buffer	pH: 7.40 Preservative: 0.1% Sodium azide Constituents: 0.24% Tris, 0.75% Glycine
Purity	Immunogen affinity purified
Clonality	Polyclonal
Isotype	IgG

Applications

Our [Abpromise guarantee](#) covers the use of **ab19294** in the following tested applications.

The application notes include recommended starting dilutions; optimal dilutions/concentrations should be determined by the end user.

Application	Abreviews	Notes
IHC-P		

Application	Abreviews	Notes
-------------	-----------	-------

ICC/IF



Application notes

ICC/IF: Use at a concentration of 5 µg/ml.

Not yet tested in other applications.

Optimal dilutions/concentrations should be determined by the end user.

Target

Function

Presents carbohydrate ligands to selectins. Also implicated in tumor cell metastasis.

Sequence similarities

Belongs to the LAMP family.

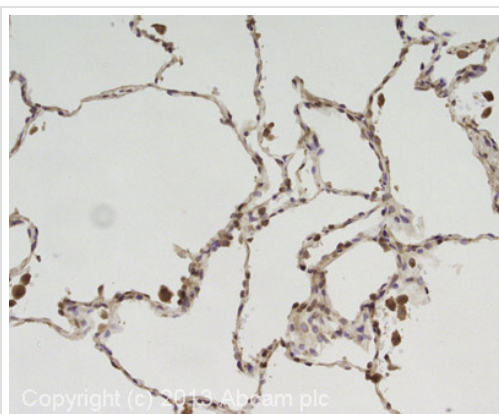
Post-translational modifications

O- and N-glycosylated; some of the 18 N-linked glycans are polylactosaminoglycans.

Cellular localization

Cell membrane. Endosome membrane. Lysosome membrane. This protein shuttles between lysosomes, endosomes, and the plasma membrane.

Images

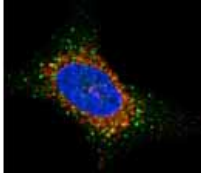


Copyright (c) 2019 Abcam plc

Immunohistochemistry (Formalin/PFA-fixed paraffin-embedded sections) - Anti-LAMP1 antibody - Lysosome Marker (ab19294)

IHC image of LAMP1 staining in human lung formalin fixed paraffin embedded tissue section, performed on a Leica Bond system using the standard protocol F. The section was pre-treated using heat mediated antigen retrieval with sodium citrate buffer (pH6, epitope retrieval solution 1) for 20 mins. The section was then incubated with ab19294, 5µg/ml, for 15 mins at room temperature and detected using an HRP conjugated compact polymer system. DAB was used as the chromogen. The section was then counterstained with haematoxylin and mounted with DPX.

For other IHC staining systems (automated and non-automated) customers should optimize variable parameters such as antigen retrieval conditions, primary antibody concentration and antibody incubation times.



Immunocytochemistry/ Immunofluorescence - Anti-LAMP1 antibody - Lysosome Marker (ab19294)

ab19294 has been successfully used in immunofluorescence procedures. ab19294 shows perinuclear staining in HeLa cells (used at 5 µg/ml). The staining is shown in red. Nuclear staining is shown in blue.

Please note: All products are "FOR RESEARCH USE ONLY AND ARE NOT INTENDED FOR DIAGNOSTIC OR THERAPEUTIC USE"

Our Abpromise to you: Quality guaranteed and expert technical support

- Replacement or refund for products not performing as stated on the datasheet
- Valid for 12 months from date of delivery
- Response to your inquiry within 24 hours
- We provide support in Chinese, English, French, German, Japanese and Spanish
- Extensive multi-media technical resources to help you
- We investigate all quality concerns to ensure our products perform to the highest standards

If the product does not perform as described on this datasheet, we will offer a refund or replacement. For full details of the Abpromise, please visit <http://www.abcam.com/abpromise> or contact our technical team.

Terms and conditions

- Guarantee only valid for products bought direct from Abcam or one of our authorized distributors