

## Product datasheet

# Anti-LAP1 antibody [RL13] ab2737

6 References 4 Images

### Overview

<b>Product name</b>	Anti-LAP1 antibody [RL13]
<b>Description</b>	Mouse monoclonal [RL13] to LAP1
<b>Host species</b>	Mouse
<b>Tested applications</b>	<b>Suitable for:</b> IHC-P, ICC/IF, IP, WB
<b>Species reactivity</b>	<b>Reacts with:</b> Mouse, Rat, Human
<b>Immunogen</b>	Other Immunogen Type corresponding to Rat LAP1. This is a Pore complex-lamina fraction isolated from rat liver nuclear envelopes.

### Properties

<b>Form</b>	Liquid
<b>Storage instructions</b>	Shipped at 4°C. Store at +4°C short term (1-2 weeks). Upon delivery aliquot. Store at -20°C or -80°C. Avoid freeze / thaw cycle.
<b>Storage buffer</b>	Preservative: 0.05% Sodium azide Constituent: PBS
<b>Purity</b>	IgG fraction
<b>Clonality</b>	Monoclonal
<b>Clone number</b>	RL13
<b>Isotype</b>	IgG1

### Applications

Our [Abpromise guarantee](#) covers the use of **ab2737** in the following tested applications.

The application notes include recommended starting dilutions; optimal dilutions/concentrations should be determined by the end user.

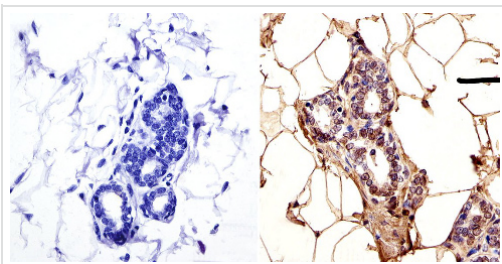
Application	Abreviews	Notes
IHC-P		1/20 - 1/50.
ICC/IF		1/100.

Application	Abreviews	Notes
IP		Use at an assay dependent concentration.
WB		1/200.

## Target

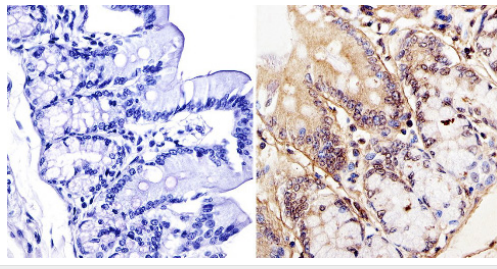
<b>Function</b>	Required for normal synaptic spine architecture and function. Necessary for DISC1 and GRM5 localization to postsynaptic density complexes and for both N-methyl D-aspartate receptor-dependent and metabotropic glutamate receptor-dependent long term depression.
<b>Tissue specificity</b>	Brain-specific. Isoform 3 is ubiquitously expressed.
<b>Sequence similarities</b>	Belongs to the LAP (LRR and PDZ) protein family. Contains 17 LRR (leucine-rich) repeats. Contains 1 PDZ (DHR) domain.
<b>Cellular localization</b>	Cytoplasm. Cell junction, synapse, postsynaptic cell membrane, postsynaptic density.

## Images



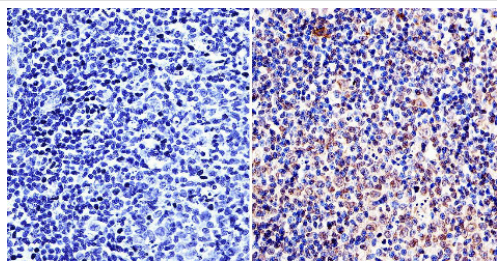
Immunohistochemistry (Formalin/PFA-fixed paraffin-embedded sections) - Anti-LAP1 [RL13] antibody (ab2737)

Immunohistochemistry (Formalin/PFA-fixed paraffin-embedded sections) was performed on rat breast tissue. Antigen retrieval was performed using 10mM sodium citrate followed by microwave treatment for 8-15 minutes. Endogenous peroxidases were blocked in 3% H<sub>2</sub>O<sub>2</sub>-methanol for 15 minutes and tissues were blocked in 3% BSA-PBS for 30 minutes at room temperature. Cells were incubated with ab2737 (1:50) overnight in a humidified chamber. Tissues were washed in PBST and detection was performed using a secondary antibody conjugated to HRP. DAB staining buffer was applied and tissues were counterstained with hematoxylin and prepped for mounting. Images were taken at 40X magnification.



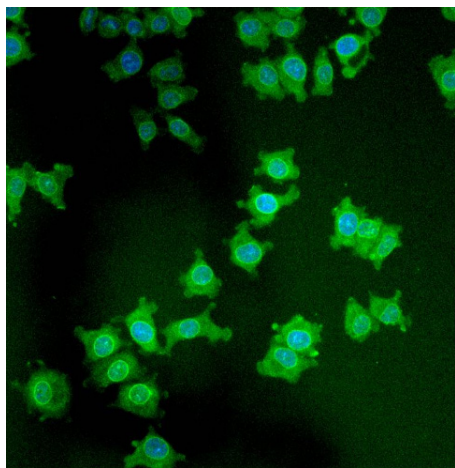
Immunohistochemistry (Formalin/PFA-fixed paraffin-embedded sections) - Anti-LAP1 [RL13] antibody (ab2737)

Immunohistochemistry (Formalin/PFA-fixed paraffin-embedded sections) was performed on rat colon tissue. Antigen retrieval was performed using 10mM sodium citrate followed by microwave treatment for 8-15 minutes. Endogenous peroxidases were blocked in 3% H<sub>2</sub>O<sub>2</sub>-methanol for 15 minutes and tissues were blocked in 3% BSA-PBS for 30 minutes at room temperature. Cells were incubated with ab2737 (1:50) overnight in a humidified chamber. Tissues were washed in PBST and detection was performed using a secondary antibody conjugated to HRP. DAB staining buffer was applied and tissues were counterstained with hematoxylin and prepped for mounting. Images were taken at 40X magnification.



Immunohistochemistry (Formalin/PFA-fixed paraffin-embedded sections) - Anti-LAP1 [RL13] antibody (ab2737)

Immunohistochemistry (Formalin/PFA-fixed paraffin-embedded sections) was performed on rat lymph node tissue. Antigen retrieval was performed using 10mM sodium citrate followed by microwave treatment for 8-15 minutes. Endogenous peroxidases were blocked in 3% H<sub>2</sub>O<sub>2</sub>-methanol for 15 minutes and tissues were blocked in 3% BSA-PBS for 30 minutes at room temperature. Cells were incubated with ab2737 (1:50) overnight in a humidified chamber. Tissues were washed in PBST and detection was performed using a secondary antibody conjugated to HRP. DAB staining buffer was applied and tissues were counterstained with hematoxylin and prepped for mounting. Images were taken at 40X magnification.



Immunocytochemistry/Immunofluorescence analysis of LAP1 using ab2737 shows staining in NS-1 Cells.

Immunocytochemistry/ Immunofluorescence - Anti-LAP1 [RL13] antibody (ab2737)

**Please note:** All products are "FOR RESEARCH USE ONLY AND ARE NOT INTENDED FOR DIAGNOSTIC OR THERAPEUTIC USE"

### Our Abpromise to you: Quality guaranteed and expert technical support

---

- Replacement or refund for products not performing as stated on the datasheet
- Valid for 12 months from date of delivery
- Response to your inquiry within 24 hours
- We provide support in Chinese, English, French, German, Japanese and Spanish
- Extensive multi-media technical resources to help you
- We investigate all quality concerns to ensure our products perform to the highest standards

If the product does not perform as described on this datasheet, we will offer a refund or replacement. For full details of the Abpromise, please visit <http://www.abcam.com/abpromise> or contact our technical team.

### Terms and conditions

---

- Guarantee only valid for products bought direct from Abcam or one of our authorized distributors