


Product datasheet

Anti-LDHD antibody ab87741

1 Image

Overview

| | |
|----------------------------|---|
| Product name | Anti-LDHD antibody |
| Description | Rabbit polyclonal to LDHD |
| Tested applications | Suitable for: WB |
| Species reactivity | Reacts with: Human Predicted to work with: Mouse, Rat, Rabbit, Horse, Cow, Cat, Dog  |
| Immunogen | Synthetic peptide corresponding to a region within internal amino acids 432 - 481 (LVNPDDAEELGRVKAFAEQLGRRALALHGTCTGEHGIGMGKRQLLQEEVG) of Human LDHD (NP_705690) Run BLAST with Run BLAST with |
| Positive control | Fetal heart lysate |

Properties

| | |
|-----------------------------|---|
| Form | Liquid |
| Storage instructions | Shipped at 4°C. Upon delivery aliquot and store at -20°C or -80°C. Avoid repeated freeze / thaw cycles. |
| Storage buffer | Preservative: None Constituents: 2% Sucrose, PBS |
| Purity | Immunogen affinity purified |
| Clonality | Polyclonal |
| Isotype | IgG |

Applications

Our [Abpromise guarantee](#) covers the use of **ab87741** in the following tested applications.

The application notes include recommended starting dilutions; optimal dilutions/concentrations should be determined by the end user.

| Application | Abreviews | Notes |
|-------------|-----------|--|
| WB | | Use a concentration of 1 µg/ml. Predicted molecular weight: 55 kDa. Good results were obtained when blocked with 5% non-fat dry milk in 0.05% PBS-T. |

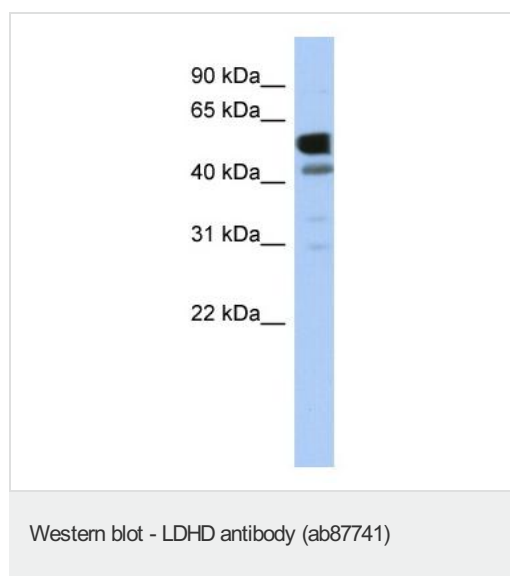
| Application | Abreviews | Notes |
|-------------|-----------|-------|
|-------------|-----------|-------|

Target

Relevance LDHD belongs to the D-isomer specific 2-hydroxyacid dehydrogenase family. D-lactate and D-glycerate dehydrogenase activities have been found in a similar protein in yeast. Alternative splicing occurs at this locus and two transcript variants encoding distinct isoforms have been identified.

Cellular localization Mitochondrial

Images



Anti-LDHD antibody (ab87741) at 1 µg/ml (in 5% skim milk / PBS buffer) + Human fetal heart lysate at 10 µg

Secondary

HRP conjugated anti-Rabbit IgG at 1/50000 dilution

Predicted band size : 55 kDa

Please note: All products are "FOR RESEARCH USE ONLY AND ARE NOT INTENDED FOR DIAGNOSTIC OR THERAPEUTIC USE"

Our Abpromise to you: Quality guaranteed and expert technical support

- Replacement or refund for products not performing as stated on the datasheet
- Valid for 12 months from date of delivery
- Response to your inquiry within 24 hours
- We provide support in Chinese, English, French, German, Japanese and Spanish
- Extensive multi-media technical resources to help you
- We investigate all quality concerns to ensure our products perform to the highest standards

If the product does not perform as described on this datasheet, we will offer a refund or replacement. For full details of the Abpromise, please visit <http://www.abcam.com/abpromise> or contact our technical team.

Terms and conditions

- Guarantee only valid for products bought direct from Abcam or one of our authorized distributors