

Product datasheet

Anti-LRRTM1 antibody ab106414

1 Image

Overview

Product name	Anti-LRRTM1 antibody
Description	Rabbit polyclonal to LRRTM1
Host species	Rabbit
Tested applications	Suitable for: WB
Species reactivity	Reacts with: Mouse Predicted to work with: Rat, Cow, Dog, Human, Pig, Macaque monkey, Gorilla, Orangutan
Immunogen	Synthetic peptide conjugated to KLH derived from within residues 450 to the C-terminus of Human LRRTM1. Read Abcam's proprietary immunogen policy
Positive control	This antibody gave a positive signal in the following tissue lysates: Mouse Forebrain; Mouse Hippocampus; Mouse Brain P0; Mouse Olfactory Bulb.

Properties

Form	Liquid
Storage instructions	Shipped at 4°C. Store at +4°C short term (1-2 weeks). Upon delivery aliquot. Store at -20°C or -80°C. Avoid freeze / thaw cycle.
Storage buffer	pH: 7.40 Preservative: 0.02% Sodium azide Constituent: PBS Note: Batches of this product that have a concentration < 1mg/ml may have BSA added as a stabilising agent. If you would like information about the formulation of a specific lot, please contact our scientific support team who will be happy to help.
Purity	Immunogen affinity purified
Clonality	Polyclonal
Isotype	IgG

Applications

Our [Abpromise guarantee](#) covers the use of **ab106414** in the following tested applications.

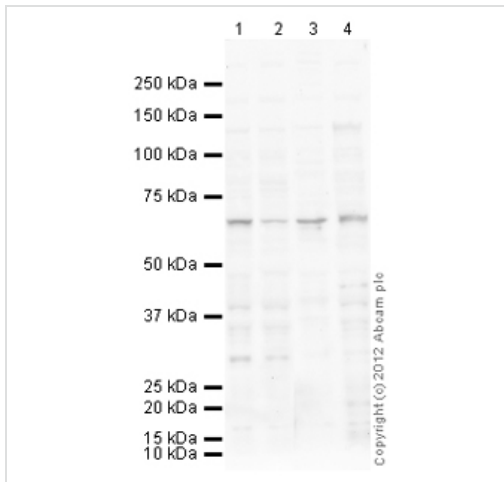
The application notes include recommended starting dilutions; optimal dilutions/concentrations should be determined by the end user.

Application	Abreviews	Notes
WB		1/250. Detects a band of approximately 65 kDa (predicted molecular weight: 59 kDa).

Target

Function	May play a role during the development of specific forebrain structures by influencing neuronal differentiation and connectivity, with a possible role in intracellular trafficking within axons.
Tissue specificity	Predominantly expression in forebrain regions including thalamus and cerebral cortex.
Sequence similarities	Belongs to the LRRTM family. Contains 9 LRR (leucine-rich) repeats. Contains 1 LRRCT domain. Contains 1 LRRNT domain.
Cellular localization	Endoplasmic reticulum membrane.

Images



Western blot - Anti-LRRTM1 antibody (ab106414)

All lanes : Anti-LRRTM1 antibody
(ab106414) at 1/250 dilution

Lane 1 : Forebrain (Mouse) Tissue Lysate

Lane 2 : Mouse Hippocampus Tissue Lysate

Lane 3 : Mouse brain tissue lysate - total
protein (0 days) (ab7188)

Lane 4 : Mouse Olfactory Bulb Lysate

Lysates/proteins at 10 µg per lane.

Secondary

All lanes : Goat Anti-Rabbit IgG H&L (HRP)
preadsorbed (ab97080) at 1/5000 dilution

Developed using the ECL technique.

Performed under reducing conditions.

Predicted band size: 59 kDa

Observed band size: 65 kDa

Additional bands at: 130 kDa, 30 kDa, 40
kDa. We are unsure as to the identity of these
extra bands.

Exposure time: 8 minutes

LRRTM1 contains a number of potential
glycosylation sites (SwissProt) which may
explain its migration at a higher molecular
weight than predicted.

Please note: All products are "FOR RESEARCH USE ONLY AND ARE NOT INTENDED FOR DIAGNOSTIC OR THERAPEUTIC USE"

Our Abpromise to you: Quality guaranteed and expert technical support

- Replacement or refund for products not performing as stated on the datasheet
- Valid for 12 months from date of delivery
- Response to your inquiry within 24 hours
- We provide support in Chinese, English, French, German, Japanese and Spanish
- Extensive multi-media technical resources to help you

- We investigate all quality concerns to ensure our products perform to the highest standards

If the product does not perform as described on this datasheet, we will offer a refund or replacement. For full details of the Abpromise, please visit <http://www.abcam.com/abpromise> or contact our technical team.

Terms and conditions

- Guarantee only valid for products bought direct from Abcam or one of our authorized distributors