


Product datasheet

Anti-Lumican antibody ab98067

1 Abreviews 1 References 2 Images

Overview

Product name	Anti-Lumican antibody
Description	Rabbit polyclonal to Lumican
Host species	Rabbit
Tested applications	Suitable for: WB, ELISA, ICC/IF
Species reactivity	Reacts with: Human Predicted to work with: Mouse, Rabbit, Horse, Chicken, Cow 
Immunogen	Synthetic peptide conjugated to KLH derived from within residues 200 - 300 of Human Lumican. Read Abcam's proprietary immunogen policy
Positive control	This antibody gave a positive signal in the following whole cell lysates: Liver (Human) Tissue Lysate. This antibody gave a positive signal in the following formaldehyde fixed cell lines: HeLa cells.

Properties

Form	Liquid
Storage instructions	Shipped at 4°C. Store at +4°C short term (1-2 weeks). Upon delivery aliquot. Store at -20°C or -80°C. Avoid freeze / thaw cycle.
Storage buffer	pH: 7.40 Preservative: 0.02% Sodium azide Constituent: PBS Note: Abcam recommends using milk as the blocking agent. Abcam welcomes customer feedback and would appreciate any comments regarding this product and the data presented above.
Purity	Immunogen affinity purified
Clonality	Polyclonal
Isotype	IgG

Applications

Our [Abpromise guarantee](#) covers the use of **ab98067** in the following tested applications.

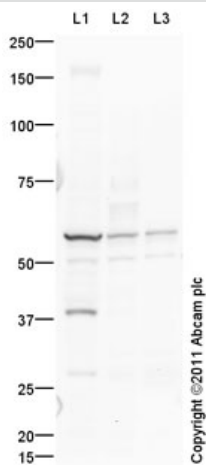
The application notes include recommended starting dilutions; optimal dilutions/concentrations should be determined by the end user.

Application	Abreviews	Notes
WB		Use a concentration of 1 µg/ml. Detects a band of approximately 38 kDa (predicted molecular weight: 38 kDa).
ELISA		Use a concentration of 1 µg/ml.
ICC/IF		Use a concentration of 5 µg/ml.

Target

Tissue specificity	Cornea and other tissues.
Sequence similarities	Belongs to the small leucine-rich proteoglycan (SLRP) family. SLRP class II subfamily. Contains 11 LRR (leucine-rich) repeats. Contains 1 LRRNT domain.
Developmental stage	Present in the extracellular matrix of human articular cartilage at all ages, although its abundance is far greater in the adult. In the adult cartilage lumican exists predominantly in a glycoprotein form lacking keratan sulfate, whereas the juvenile form of the molecule is a proteoglycan.
Post-translational modifications	Sulfated on tyrosine residue(s).
Cellular localization	Secreted > extracellular space > extracellular matrix.

Images



Western blot - Anti-Lumican antibody (ab98067)

All lanes : Anti-Lumican antibody (ab98067)
at 1 µg/ml

Lane 1 : Human liver tissue lysate - total
protein ([ab29889](#))

Lane 2 : Lung (Human) Tissue Lysate

Lane 3 : Human colon tissue lysate - total
protein ([ab30051](#))

Lysates/proteins at 10 µg per lane.

Secondary

All lanes : Goat Anti-Rabbit IgG H&L (HRP)
preadsorbed ([ab97080](#)) at 1/5000 dilution

Developed using the ECL technique.

Performed under reducing conditions.

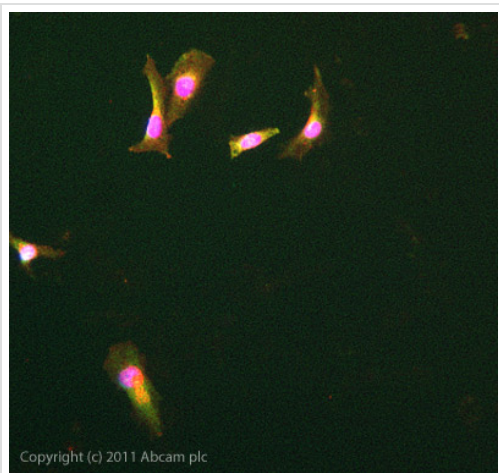
Predicted band size: 38 kDa

Observed band size: 38 kDa

Additional bands at: 50 kDa (possible
glycosylated form), 60 kDa (possible
glycosylated form)

Exposure time: 8 minutes

We hypothesise that the antibody recognises non-modified Lumican in human liver tissue lysate (lane 1). The bands around 50 and 60-kDa may represent glycosylated forms of the target protein. Lumican has 4 potential glycosylation sites (Swissprot data). Abcam welcomes customer feedback and would appreciate any comments regarding this product and the data presented above.



Immunocytochemistry/ Immunofluorescence - Anti-Lumican antibody (ab98067)

ICC/IF image of ab98067 stained HeLa cells. The cells were 4% formaldehyde fixed (10 min) and then incubated in 1%BSA / 10% normal goat serum / 0.3M glycine in 0.1% PBS-Tween for 1h to permeabilise the cells and block non-specific protein-protein interactions. The cells were then incubated with the antibody ab98067 at 5µg/ml overnight at +4°C. The secondary antibody (green) was DyLight® 488 goat anti- rabbit (ab96899) IgG (H+L) used at a 1/1000 dilution for 1h. Alexa Fluor® 594 WGA was used to label plasma membranes (red) at a 1/200 dilution for 1h. DAPI was used to stain the cell nuclei (blue) at a concentration of 1.43µM.

Please note: All products are "FOR RESEARCH USE ONLY AND ARE NOT INTENDED FOR DIAGNOSTIC OR THERAPEUTIC USE"

Our Abpromise to you: Quality guaranteed and expert technical support

- Replacement or refund for products not performing as stated on the datasheet
- Valid for 12 months from date of delivery
- Response to your inquiry within 24 hours
- We provide support in Chinese, English, French, German, Japanese and Spanish
- Extensive multi-media technical resources to help you
- We investigate all quality concerns to ensure our products perform to the highest standards

If the product does not perform as described on this datasheet, we will offer a refund or replacement. For full details of the Abpromise, please visit <http://www.abcam.com/abpromise> or contact our technical team.

Terms and conditions

- Guarantee only valid for products bought direct from Abcam or one of our authorized distributors