


Product datasheet

Anti-MAFF antibody ab110824

1 Image

Overview

Product name	Anti-MAFF antibody
Description	Rabbit polyclonal to MAFF
Host species	Rabbit
Tested applications	Suitable for: IHC-P
Species reactivity	Reacts with: Human Predicted to work with: Mouse 
Immunogen	Synthetic peptide derived from an internal sequence of Human MAFF.
Positive control	Human breast carcinoma tissue.

Properties

Form	Liquid
Storage instructions	Shipped at 4°C. Store at -20°C. Stable for 12 months at -20°C.
Storage buffer	pH: 7.40 Preservative: 0.02% Sodium azide Constituents: PBS, 0.88% Sodium chloride, 50% Glycerol Note: PBS (without Mg ²⁺ and Ca ²⁺)
Purity	Immunogen affinity purified
Purification notes	ab110824 was affinity-purified from rabbit antiserum by affinity-chromatography using epitope-specific immunogen.
Clonality	Polyclonal
Isotype	IgG

Applications

Our [Abpromise guarantee](#) covers the use of **ab110824** in the following tested applications.

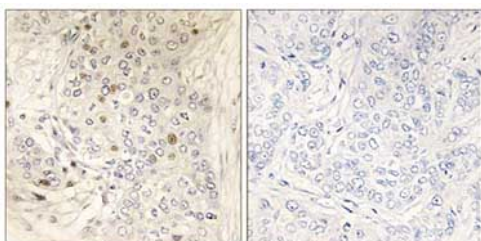
The application notes include recommended starting dilutions; optimal dilutions/concentrations should be determined by the end user.

Application	Abreviews	Notes
IHC-P		1/50 - 1/100. Perform heat mediated antigen retrieval with citrate buffer pH 6 before commencing with IHC staining protocol.

Target

Function	Interacts with the upstream promoter region of the oxytocin receptor gene. May be a transcriptional enhancer in the up-regulation of the oxytocin receptor gene at parturition. Since it lacks a putative transactivation domain, it may behave as a transcriptional repressor when it dimerize among himself. May also serve as a transcriptional activator by dimerizing with other (usually larger) basic-zipper proteins and recruiting them to specific DNA-binding sites. May be involved in the cellular stress response.
Tissue specificity	Expressed in the term myometrium and kidney.
Sequence similarities	Belongs to the bZIP family. Maf subfamily. Contains 1 bZIP domain.
Cellular localization	Nucleus.

Images



ab110824, at 1/50 dilution, staining MAFF in paraffin-embedded Human breast carcinoma tissue by Immunohistochemistry, in the presence (right panel) or absence (left panel) of immunising peptide.

Immunohistochemistry (Formalin/PFA-fixed paraffin-embedded sections) - MAFF antibody (ab110824)

Please note: All products are "FOR RESEARCH USE ONLY AND ARE NOT INTENDED FOR DIAGNOSTIC OR THERAPEUTIC USE"

Our Abpromise to you: Quality guaranteed and expert technical support

- Replacement or refund for products not performing as stated on the datasheet
- Valid for 12 months from date of delivery
- Response to your inquiry within 24 hours
- We provide support in Chinese, English, French, German, Japanese and Spanish
- Extensive multi-media technical resources to help you
- We investigate all quality concerns to ensure our products perform to the highest standards

If the product does not perform as described on this datasheet, we will offer a refund or replacement. For full details of the Abpromise, please visit <http://www.abcam.com/abpromise> or contact our technical team.

Terms and conditions

- Guarantee only valid for products bought direct from Abcam or one of our authorized distributors