

Product datasheet

Anti-MAP1LC3A antibody ab62720

★★★★☆ 4 Abreviews 10 References 1 Image

Overview

Product name	Anti-MAP1LC3A antibody
Description	Rabbit polyclonal to MAP1LC3A
Host species	Rabbit
Tested applications	Suitable for: WB, IP, ICC/IF
Species reactivity	Reacts with: Mouse, Rat, Human
Immunogen	Synthetic peptide: PSDRPFKQRRSFADR conjugated to KLH by a Cysteine residue linker, corresponding to amino acids 2-15 of Human MAP1LC3A Run BLAST with Run BLAST with
Positive control	Whole brain. U87 cells.

Properties

Form	Liquid
Storage instructions	Shipped at 4°C. Store at +4°C short term (1-2 weeks). Upon delivery aliquot. Store at -20°C or -80°C. Avoid freeze / thaw cycle.
Storage buffer	Preservative: 15mM Sodium Azide Constituents: 0.01M PBS, pH 7.4
Purity	Immunogen affinity purified
Clonality	Polyclonal
Isotype	IgG

Applications

Our [Abpromise guarantee](#) covers the use of **ab62720** in the following tested applications.

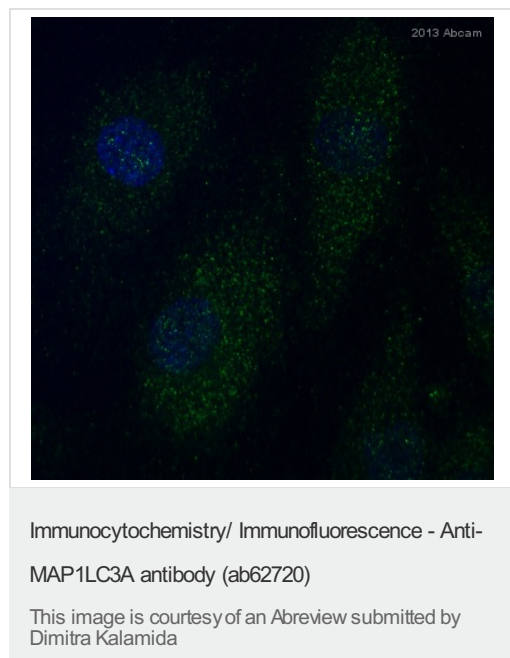
The application notes include recommended starting dilutions; optimal dilutions/concentrations should be determined by the end user.

Application	Abreviews	Notes
WB	★★★★☆	Use a concentration of 0.5 - 1 µg/ml. Detects a band of approximately 16-18 kDa (predicted molecular weight: 16-18 kDa).
IP		Use at an assay dependent concentration.
ICC/IF	★★★★★	Use at an assay dependent concentration.

Target

Function	Probably involved in formation of autophagosomal vacuoles (autophagosomes).
Tissue specificity	Most abundant in heart, brain, liver, skeletal muscle and testis but absent in thymus and peripheral blood leukocytes.
Sequence similarities	Belongs to the MAP1 LC3 family.
Post-translational modifications	The precursor molecule is cleaved by APG4B/ATG4B to form the cytosolic form, LC3-I. This is activated by APG7L/ATG7, transferred to ATG3 and conjugated to phospholipid to form the membrane-bound form, LC3-II.
Cellular localization	Cytoplasm > cytoskeleton. Endomembrane system. Cytoplasmic vesicle > autophagosome membrane. LC3-II binds to the autophagic membranes.

Images



ab62720 staining MAP1LC3A in Human HuVEC by ICC/IF (Immunocytochemistry/immunofluorescence). Cells were fixed with paraformaldehyde, permeabilized with 0.1% Triton X-100 pH 7.4 for 5 minutes and blocked with 5% BSA for 20 minutes at room temperature. Samples were incubated with primary antibody (1/500 in PBS) for 1 hour. A CF488A-conjugated Donkey anti-rabbit IgG polyclonal (1/500) was used as the secondary antibody.

Please note: All products are "FOR RESEARCH USE ONLY AND ARE NOT INTENDED FOR DIAGNOSTIC OR THERAPEUTIC USE"

Our Abpromise to you: Quality guaranteed and expert technical support

- Replacement or refund for products not performing as stated on the datasheet
- Valid for 12 months from date of delivery
- Response to your inquiry within 24 hours

- We provide support in Chinese, English, French, German, Japanese and Spanish
- Extensive multi-media technical resources to help you
- We investigate all quality concerns to ensure our products perform to the highest standards

If the product does not perform as described on this datasheet, we will offer a refund or replacement. For full details of the Abpromise, please visit <http://www.abcam.com/abpromise> or contact our technical team.

Terms and conditions

- Guarantee only valid for products bought direct from Abcam or one of our authorized distributors