

Product datasheet

Anti-MAP2K1IP1 antibody ab96653

★★★★☆ 1 Abreviews 2 Images

Overview

Product name	Anti-MAP2K1IP1 antibody
Description	Rabbit polyclonal to MAP2K1IP1
Tested applications	Suitable for: WB, IHC-P
Species reactivity	Reacts with: Human Predicted to work with: Mouse, Rat, Cow, Zebrafish
Immunogen	Recombinant fragment, corresponding to amino acids 1-124 of Human MAP2K1IP1
Positive control	Paraffin-embedded SW480 xenograft. 293T whole cell lysate.

Properties

Form	Liquid
Storage instructions	Shipped at 4°C. Upon delivery aliquot. Store at -20°C or -80°C. Avoid freeze / thaw cycle.
Storage buffer	Preservative: 0.01% Thimerosal (merthiolate) Constituents: 10% Glycerol, 0.1M Tris, 0.1M Glycine, pH 7.0
Purity	Immunogen affinity purified
Clonality	Polyclonal
Isotype	IgG

Applications

Our [Abpromise guarantee](#) covers the use of **ab96653** in the following tested applications.

The application notes include recommended starting dilutions; optimal dilutions/concentrations should be determined by the end user.

Application	Abreviews	Notes
WB	★★★★☆	1/500 - 1/3000. Predicted molecular weight: 14 kDa.
IHC-P		1/100 - 1/500.

Target

Function

As part of the Ragulator complex it is involved in amino acid sensing and activation of mTORC1, a signaling complex promoting cell growth in response to growth factors, energy levels, and amino acids. Activated by amino acids through a mechanism involving the lysosomal V-ATPase, the Ragulator functions as a guanine nucleotide exchange factor activating the small GTPases Rag. Activated Ragulator and Rag GTPases function as a scaffold recruiting mTORC1 to lysosomes where it is in turn activated. Adapter protein that enhances the efficiency of the MAP kinase cascade facilitating the activation of MAPK2.

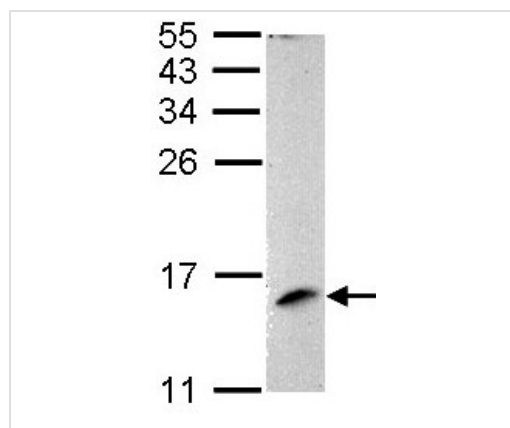
Sequence similarities

Belongs to the LAMTOR3 family.

Cellular localization

Late endosome membrane.

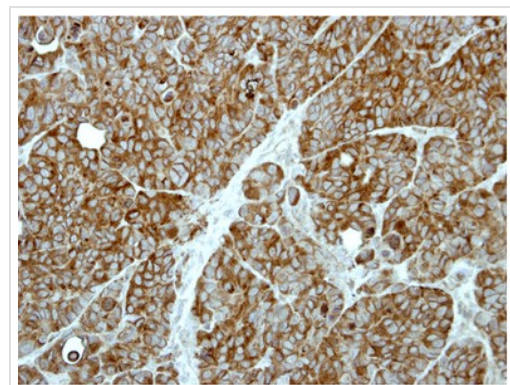
Images



Western blot - Anti-MAP2K1IP1 antibody (ab96653)

Anti-MAP2K1IP1 antibody (ab96653) at
1/1000 dilution + 293T whole cell lysate at 30
 μ g

Predicted band size : 14 kDa



Immunohistochemistry (Formalin/PFA-fixed paraffin-
embedded sections) - Anti-MAP2K1IP1 antibody
(ab96653)

ab96653, at 1/500, staining paraffin-
embedded SW480 xenograft by
Immunohistochemistry.

Please note: All products are "FOR RESEARCH USE ONLY AND ARE NOT INTENDED FOR DIAGNOSTIC OR THERAPEUTIC USE"

Our Abpromise to you: Quality guaranteed and expert technical support

- Replacement or refund for products not performing as stated on the datasheet

- Valid for 12 months from date of delivery
- Response to your inquiry within 24 hours

- We provide support in Chinese, English, French, German, Japanese and Spanish
- Extensive multi-media technical resources to help you
- We investigate all quality concerns to ensure our products perform to the highest standards

If the product does not perform as described on this datasheet, we will offer a refund or replacement. For full details of the Abpromise, please visit <http://www.abcam.com/abpromise> or contact our technical team.

Terms and conditions

- Guarantee only valid for products bought direct from Abcam or one of our authorized distributors