

Product datasheet

Anti-MATN1 antibody ab106384

[3 Images](#)

Overview

Product name	Anti-MATN1 antibody
Description	Rabbit polyclonal to MATN1
Tested applications	Suitable for: ICC/IF, WB, IHC-P
Species reactivity	Reacts with: Mouse, Rat, Human
Immunogen	A 13 amino acid peptide from near the carboxy terminus of Human MATN1 (NP_002370).
Positive control	Rat liver tissue lysate Human liver tissue

Properties

Form	Liquid
Storage instructions	Shipped at 4°C. Store at 4°C (stable for up to 12 months).
Storage buffer	Preservative: 0.02% Sodium Azide Constituents: PBS
Purity	Immunogen affinity purified
Clonality	Polyclonal
Isotype	IgG

Applications

Our [Abpromise guarantee](#) covers the use of **ab106384** in the following tested applications.

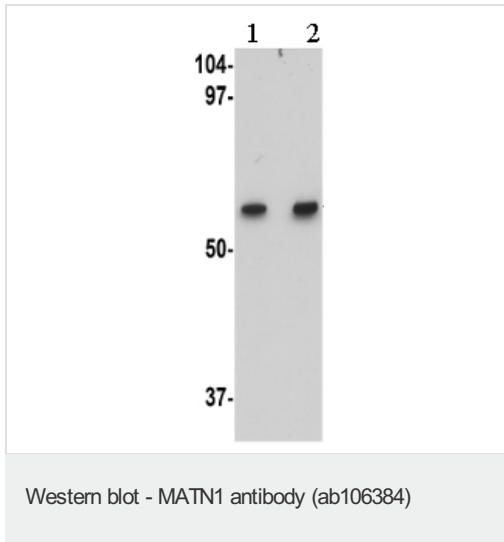
The application notes include recommended starting dilutions; optimal dilutions/concentrations should be determined by the end user.

Application	Abreviews	Notes
ICC/IF		Use a concentration of 20 µg/ml.
WB		Use a concentration of 1 - 2 µg/ml. Predicted molecular weight: 54 kDa.
IHC-P		Use a concentration of 5 µg/ml.

Target

Function	Cartilage matrix protein is a major component of the extracellular matrix of non-articular cartilage. It binds to collagen.
Sequence similarities	Contains 1 EGF-like domain. Contains 2 VWFA domains.
Cellular localization	Secreted, extracellular space, extracellular matrix.

Images



Lane 1 : Anti-MATN1 antibody (ab106384) at 1 µg/ml

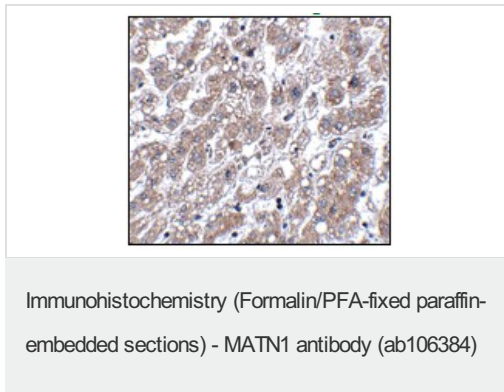
Lane 2 : Anti-MATN1 antibody (ab106384) at 2 µg/ml

Lane 1 : Rat liver tissue lysate

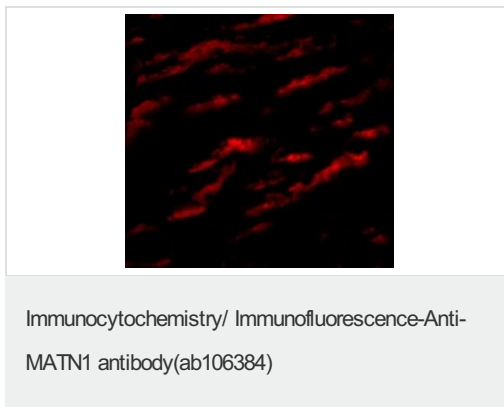
Lane 2 : Rat liver tissue lysate

Lysates/proteins at 15 µg per lane.

Predicted band size : 54 kDa



Immunohistochemistry of MATN1 in Human liver tissue using ab106384 at 5 µg/ml.



Immunofluorescence of MATN1 in Human Liver cells using ab106384 at 20 ug/ml.

Our Abpromise to you: Quality guaranteed and expert technical support

- Replacement or refund for products not performing as stated on the datasheet
- Valid for 12 months from date of delivery
- Response to your inquiry within 24 hours

- We provide support in Chinese, English, French, German, Japanese and Spanish
- Extensive multi-media technical resources to help you
- We investigate all quality concerns to ensure our products perform to the highest standards

If the product does not perform as described on this datasheet, we will offer a refund or replacement. For full details of the Abpromise, please visit <http://www.abcam.com/abpromise> or contact our technical team.

Terms and conditions

- Guarantee only valid for products bought direct from Abcam or one of our authorized distributors