

Product datasheet

MCP4 overexpression 293T lysate (whole cell) ab94142

2 Images

Overview

Product name	MCP4 overexpression 293T lysate (whole cell)
Description	MCP4 overexpression lysate
General notes	ab94142 is a 293T cell transfected lysate in which Human MCP4 has been transiently over-expressed using a pCMV-MCP4 plasmid. The lysate is provided in 1 x Sample Buffer. Note: For more details about how the transfected lysate was prepared view preparation notes
Tested applications	Suitable for: WB

Properties

Form	Liquid
Storage instructions	Shipped on dry ice. Upon delivery aliquot and store at -20°C. Avoid freeze / thaw cycles.
Storage buffer	pH: 6.80 Constituent: 100% 1x Sample Buffer
Purity	Whole Cell Lysate
Background	Function: Chemotactic factor that attracts monocytes, lymphocytes, basophils and eosinophils, but not neutrophils. Signals through CCR2B and CCR3 receptors. Plays a role in the accumulation of leukocytes at both sides of allergic and non-allergic inflammation. May be involved in the recruitment of monocytes into the arterial wall during the disease process of atherosclerosis. May play a role in the monocyte attraction in tissues chronically exposed to exogenous pathogens. Tissue specificity: Widely expressed. Found in small intestine, thymus, colon, lung, trachea, stomach and lymph node. Low levels seen in the pulmonary artery smooth muscle cells. Similarity: Belongs to the intercrine beta (chemokine CC) family. PTM: One major form (form long), and two minor forms (short chain and medium chain) are produced by differential signal peptide cleavage. The medium chain is about 30-fold less active than the long chain.

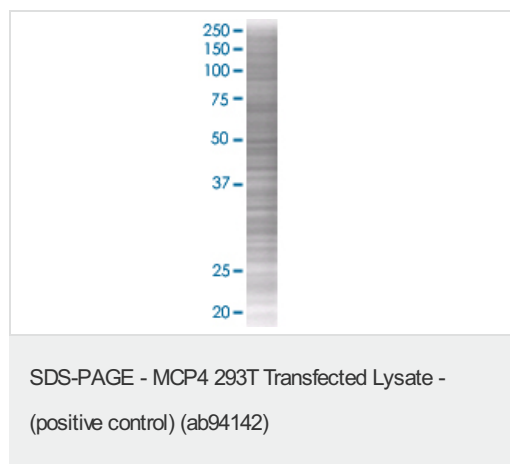
Applications

Our [Abpromise guarantee](#) covers the use of **ab94142** in the following tested applications.

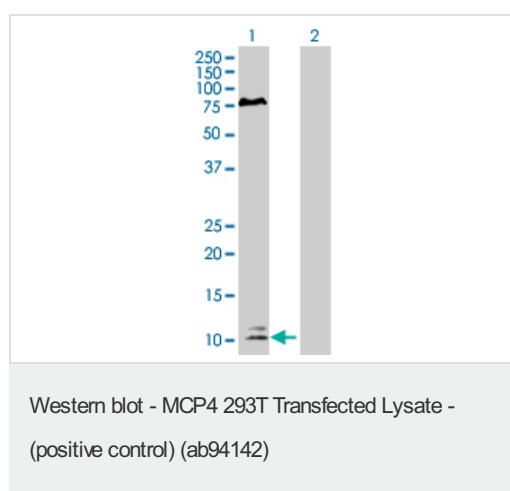
The application notes include recommended starting dilutions; optimal dilutions/concentrations should be determined by the end user.

Application	Abreviews	Notes
WB		Use at an assay dependent dilution.

Images



ab94142 at 15µg/lane on an SDS-PAGE gel.



All lanes : Anti-MCP4 antibody (ab88080) at 1/500 dilution

Lane 1 : MCP4 overexpression 293T lysate (whole cell) (ab94142)

Lane 2 : 293T non-transfected lysate

Lysates/proteins at 25 µg per lane.

Secondary

Goat Anti-mouse IgG (H and L) HRP conjugated at 1/2500 dilution

Please note: All products are "FOR RESEARCH USE ONLY AND ARE NOT INTENDED FOR DIAGNOSTIC OR THERAPEUTIC USE"

Our Abpromise to you: Quality guaranteed and expert technical support

- Replacement or refund for products not performing as stated on the datasheet
- Valid for 12 months from date of delivery
- Response to your inquiry within 24 hours
- We provide support in Chinese, English, French, German, Japanese and Spanish
- Extensive multi-media technical resources to help you
- We investigate all quality concerns to ensure our products perform to the highest standards

If the product does not perform as described on this datasheet, we will offer a refund or replacement. For full details of the Abpromise,

please visit <http://www.abcam.com/abpromise> or contact our technical team.

Terms and conditions

- Guarantee only valid for products bought direct from Abcam or one of our authorized distributors