

Product datasheet

Anti-MD1 antibody - Carboxyterminal end ab62507

2 Images

Overview

Product name	Anti-MD1 antibody - Carboxyterminal end
Description	Rabbit polyclonal to MD1 - Carboxyterminal end
Specificity	This antibody reacts with MD1
Tested applications	Suitable for: WB, IHC-P
Species reactivity	Reacts with: Human
Immunogen	A 14 amino acid synthetic peptide from near the carboxy terminus of human MD1
Positive control	Daudi cell lysate and human spleen tissue

Properties

Form	Liquid
Storage instructions	Shipped at 4°C. Store at +4°C.
Storage buffer	Preservative: 0.02% Sodium Azide Constituents: PBS
Purity	Immunogen affinity purified
Clonality	Polyclonal
Isotype	IgG

Applications

Our [Abpromise guarantee](#) covers the use of **ab62507** in the following tested applications.

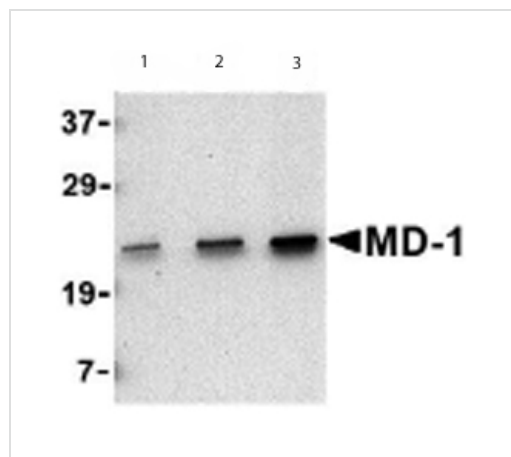
The application notes include recommended starting dilutions; optimal dilutions/concentrations should be determined by the end user.

Application	Abreviews	Notes
WB		Use a concentration of 0.5 - 2 µg/ml. Detects a band of approximately 23 kDa (predicted molecular weight: 18 kDa).
IHC-P		Use a concentration of 2 µg/ml.

Target

Function	May cooperate with CD180 and TLR4 to mediate the innate immune response to bacterial lipopolysaccharide (LPS) and cytokine production. Important for efficient CD180 cell surface expression.
Tissue specificity	Highly expressed in B-cells, monocytes and tonsil.
Cellular localization	Secreted > extracellular space. Associated with CD180 at the cell surface.

Images



Western blot - MD1 antibody - Carboxyterminal end (ab62507)

Lane 1 : Anti-MD1 antibody - Carboxyterminal end (ab62507) at 0.5 µg/ml

Lane 2 : Anti-MD1 antibody - Carboxyterminal end (ab62507) at 1 µg/ml

Lane 3 : Anti-MD1 antibody - Carboxyterminal end (ab62507) at 2 µg/ml

Lane 1 : Daudi cell lysate

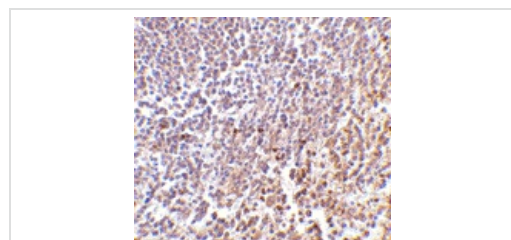
Lane 2 : Daudi cell lysate

Lane 3 : Daudi cell lysate

Lysates/proteins at 15 µg per lane.

Predicted band size : 18 kDa

Observed band size : 23 kDa



Immunohistochemistry (Formalin/PFA-fixed paraffin-embedded sections) - MD1 antibody - Carboxyterminal end (ab62507)

Immunohistochemistry of MD1 in paraffin embedded human spleen tissue section with ab62507 antibody at 2 µg/ml.

Please note: All products are "FOR RESEARCH USE ONLY AND ARE NOT INTENDED FOR DIAGNOSTIC OR THERAPEUTIC USE"

Our Abpromise to you: Quality guaranteed and expert technical support

- Replacement or refund for products not performing as stated on the datasheet
- Valid for 12 months from date of delivery

- Response to your inquiry within 24 hours
- We provide support in Chinese, English, French, German, Japanese and Spanish
- Extensive multi-media technical resources to help you
- We investigate all quality concerns to ensure our products perform to the highest standards

If the product does not perform as described on this datasheet, we will offer a refund or replacement. For full details of the Abpromise, please visit <http://www.abcam.com/abpromise> or contact our technical team.

Terms and conditions

- Guarantee only valid for products bought direct from Abcam or one of our authorized distributors