


Product datasheet

Anti-MEIS2 antibody ab73164

★★★★★ 2 Abreviews 1 References 2 Images

Overview

Product name	Anti-MEIS2 antibody
Description	Rabbit polyclonal to MEIS2
Tested applications	Suitable for: IHC-P, WB
Species reactivity	Reacts with: Mouse, Rat, Human Predicted to work with: Horse, Cow, Dog 
Immunogen	Synthetic peptide conjugated to KLH derived from within residues 450 to the C-terminus of Human MEIS2. Read Abcam's proprietary immunogen policy (Peptide available as ab73163 .)
Positive control	This antibody gave a positive signal in human, mouse and rat brain tissue lysates.

Properties

Form	Liquid
Storage instructions	Shipped at 4°C. Store at +4°C short term (1-2 weeks). Upon delivery aliquot. Store at -20°C or -80°C. Avoid freeze / thaw cycle.
Storage buffer	Preservative: 0.02% Sodium Azide Constituents: 1% BSA, PBS, pH 7.4
Purity	Immunogen affinity purified
Clonality	Polyclonal
Isotype	IgG

Applications

Our [Abpromise guarantee](#) covers the use of **ab73164** in the following tested applications.

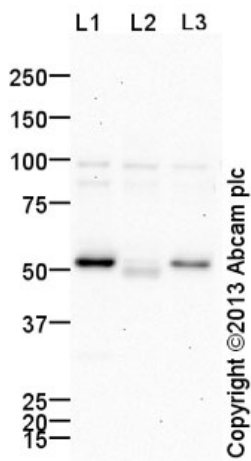
The application notes include recommended starting dilutions; optimal dilutions/concentrations should be determined by the end user.

Application	Abreviews	Notes
IHC-P	★★★★☆	1/200. Perform heat mediated antigen retrieval before commencing with IHC staining protocol.
WB	★★★★★	Use a concentration of 1 µg/ml. Detects a band of approximately 52 kDa (predicted molecular weight: 52 kDa). Can be blocked with Human MEIS2 peptide (ab73163) .

Target

Tissue specificity	Expressed in various tissues. In hematopoietic tissues, the lymphoid organs express high levels of MEIS2. Also expressed in some regions of the brain, such as the putamen.
Sequence similarities	Belongs to the TALE/MEIS homeobox family. Contains 1 homeobox DNA-binding domain.
Cellular localization	Nucleus.

Anti-MEIS2 antibody images



Western blot - Anti-MEIS2 antibody (ab73164)

All lanes : Anti-MEIS2 antibody (ab73164) at 1 µg/ml

Lane 1 : Brain (Human) Tissue Lysate - adult normal tissue

Lane 2 : Brain (Mouse) Tissue Lysate - adult normal tissue

Lane 3 : Brain (Rat) Tissue Lysate - adult normal tissue

Lysates/proteins at 15 µg per lane.

Secondary

Goat Anti-Rabbit IgG H&L (HRP) (ab97051) at 1/10000 dilution

Developed using the ECL technique

Performed under reducing conditions.

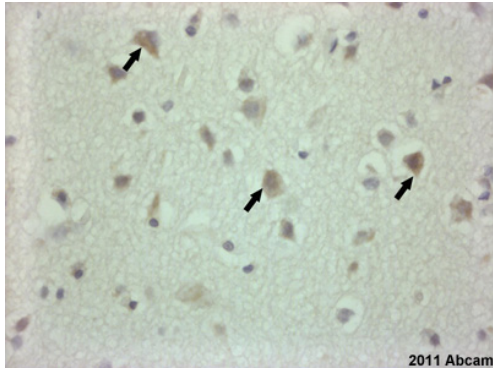
Predicted band size : 52 kDa

Observed band size : 52 kDa

Additional bands at : 100 kDa. We are unsure as to the identity of these extra bands.

Exposure time : 8 minutes

This blot was produced using a 4-12% Bis-tris gel under the MOPS buffer system. The gel was run at 200V for 50 minutes before being transferred onto a Nitrocellulose membrane at 30V for 70 minutes. The membrane was then blocked for an hour using 5% Milk before being incubated with ab73164 in 2% Milk, overnight at 4°C. Antibody binding was detected using an anti-rabbit antibody conjugated to HRP, and visualised using ECL development solution.



Immunohistochemistry (Formalin/PFA-fixed paraffin-embedded sections) - MEIS2 antibody (ab73164)

This image is courtesy of an Abreview submitted by Antibody Solutions

ab73164 staining human brain sections in IHC-P. The tissue was fixed with formaldehyde and a heat mediated antigen retrieval step was performed. Blocking of the sample was done with 5 minutes of peroxidase block and 10 minutes of protein block, followed by staining with ab73164 at 1/200 for 45 minutes at 20°C. A HRP conjugated goat anti-rabbit polyclonal antibody was used as the secondary antibody.

Please note: All products are "FOR RESEARCH USE ONLY AND ARE NOT INTENDED FOR DIAGNOSTIC OR THERAPEUTIC USE"

Our Abpromise to you: Quality guaranteed and expert technical support

- Replacement or refund for products not performing as stated on the datasheet
- Valid for 12 months from date of delivery
- Response to your inquiry within 24 hours
- We provide support in Chinese, English, French, German, Japanese and Spanish
- Extensive multi-media technical resources to help you
- We investigate all quality concerns to ensure our products perform to the highest standards

If the product does not perform as described on this datasheet, we will offer a refund or replacement. For full details of the Abpromise, please visit <http://www.abcam.com/abpromise> or contact our technical team.

Terms and conditions

- Guarantee only valid for products bought direct from Abcam or one of our authorized distributors