

## Product datasheet

# Anti-MICALL1 antibody ab105665

[6 Images](#)

### Overview

<b>Product name</b>	Anti-MICALL1 antibody
<b>Description</b>	Rabbit polyclonal to MICALL1
<b>Host species</b>	Rabbit
<b>Tested applications</b>	<b>Suitable for:</b> IHC-P, WB
<b>Species reactivity</b>	<b>Reacts with:</b> Human
<b>Immunogen</b>	Synthetic peptide corresponding to a region within N terminal amino acids 204-253 (ENGPEEGTFV CAEHCARLGP GTRSGTRPGP FSQPKQQHQQ QLAEDAKDVP) of Human MICALL1 (NP_203744). <a href="#">Run BLAST with ExPASy</a> <a href="#">Run BLAST with NCBI</a>
<b>Positive control</b>	Human fetal liver lysate.

### Properties

<b>Form</b>	Liquid
<b>Storage instructions</b>	Shipped at 4°C. Upon delivery aliquot and store at -20°C. Avoid repeated freeze / thaw cycles.
<b>Storage buffer</b>	Preservative: None Constituents: 2% Sucrose, PBS
<b>Purity</b>	Immunogen affinity purified
<b>Clonality</b>	Polyclonal
<b>Isotype</b>	IgG

### Applications

Our [Abpromise guarantee](#) covers the use of **ab105665** in the following tested applications.

The application notes include recommended starting dilutions; optimal dilutions/concentrations should be determined by the end user.

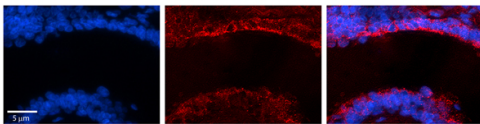
Application	Abreviews	Notes
IHC-P		1/100.

Application	Abreviews	Notes
WB		Use a concentration of 0.5 µg/ml. Predicted molecular weight: 93 kDa. Good results were obtained when blocked with 5% non-fat dry milk in 0.05% PBS-T.

## Target

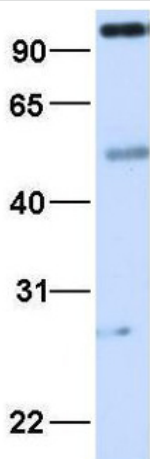
<b>Function</b>	May be a cytoskeletal regulator.
<b>Sequence similarities</b>	Contains 1 CH (calponin-homology) domain. Contains 1 LIM zinc-binding domain.
<b>Cellular localization</b>	Cytoplasm > cytoskeleton.

## Images



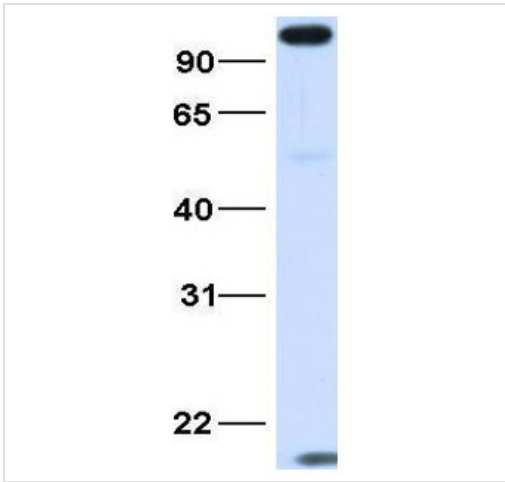
Immunohistochemistry (Formalin/PFA-fixed paraffin-embedded sections) - Anti-MICALL1 antibody (ab105665)

Immunohistochemistry (Formalin/PFA-fixed paraffin-embedded sections) analysis of human bronchial epithelial tissue labelling MICALL1 with ab105665 at 1/100. A Cy3-conjugated donkey anti-rabbit IgG (1/200) was used as the secondary antibody. Positive staining shown in the cytoplasm. Magnification: 20X. Exposure time: 0.5 - 2.0 seconds. Left - DAPI. Middle - MICALL1. Right - Merge.



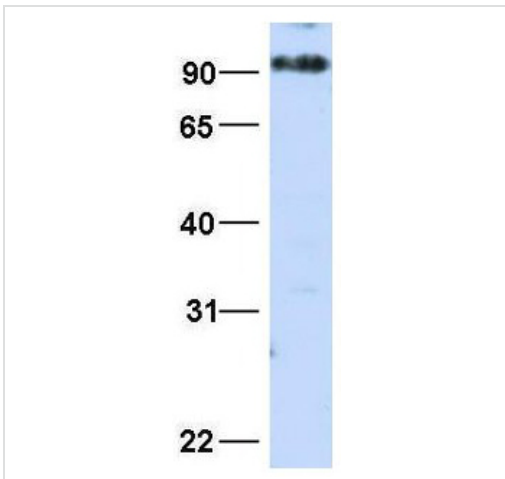
Western blot - Anti-MICALL1 antibody (ab105665)

Western blot analysis of Human fetal lung tissue lysate labeling MICALL1 with ab105665 at 1.0µg/ml.



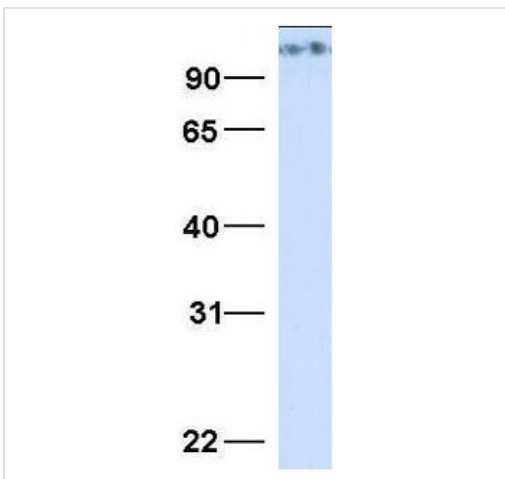
Western blot analysis of Human adult placenta tissue lysate labeling MICALL1 with ab105665 at 1.0µg/ml.

Western blot - Anti-MICALL1 antibody (ab105665)



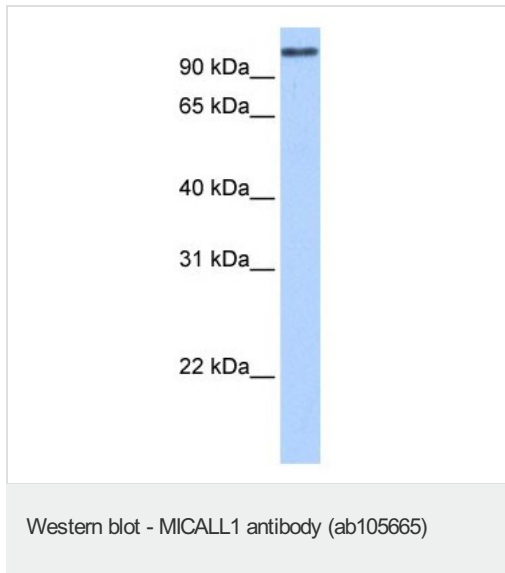
Western blot analysis of HepG2 cell lysate labeling MICALL1 with ab105665 at 1.0µg/ml.

Western blot - Anti-MICALL1 antibody (ab105665)



Western blot analysis of 293T cell lysate labeling MICALL1 with ab105665 at 1.0µg/ml.

Western blot - Anti-MICALL1 antibody (ab105665)



Anti-MICALL1 antibody (ab105665) at 0.5  $\mu\text{g/ml}$  + Human fetal liver cell lysate at 10  $\mu\text{g}$

**Predicted band size:** 93 kDa

Gel concentration: 12%

**Please note:** All products are "FOR RESEARCH USE ONLY AND ARE NOT INTENDED FOR DIAGNOSTIC OR THERAPEUTIC USE"

### Our Abpromise to you: Quality guaranteed and expert technical support

- Replacement or refund for products not performing as stated on the datasheet
- Valid for 12 months from date of delivery
- Response to your inquiry within 24 hours
- We provide support in Chinese, English, French, German, Japanese and Spanish
- Extensive multi-media technical resources to help you
- We investigate all quality concerns to ensure our products perform to the highest standards

If the product does not perform as described on this datasheet, we will offer a refund or replacement. For full details of the Abpromise, please visit <http://www.abcam.com/abpromise> or contact our technical team.

### Terms and conditions

- Guarantee only valid for products bought direct from Abcam or one of our authorized distributors