


Product datasheet

Anti-MLLT1 antibody ab111864

1 Image

Overview

Product name	Anti-MLLT1 antibody
Description	Rabbit polyclonal to MLLT1
Host species	Rabbit
Tested applications	Suitable for: IHC-P
Species reactivity	Reacts with: Human Predicted to work with: Rhesus monkey, Gorilla, Orangutan 
Immunogen	Synthetic peptide, corresponding to a region between amino acids 325-375 of Human MLLT1 (NP_005925.2).
Positive control	Human skin carcinoma

Properties

Form	Liquid
Storage instructions	Shipped at 4°C. Upon delivery aliquot and store at -20°C. Avoid freeze / thaw cycles.
Storage buffer	Preservative: 0.09% Sodium azide Constituents: 99% Tris buffered saline, 0.1% BSA
Purity	Immunogen affinity purified
Purification notes	Affinity purified using an epitope specific to MLLT1 immobilized on solid support.
Clonality	Polyclonal
Isotype	IgG

Applications

Our [Abpromise guarantee](#) covers the use of **ab111864** in the following tested applications.

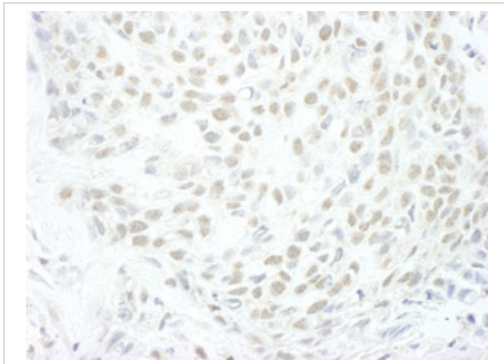
The application notes include recommended starting dilutions; optimal dilutions/concentrations should be determined by the end user.

Application	Abreviews	Notes
IHC-P		1/250.

Target

Function	Capable of activating transcription from synthetic reporter genes in both lymphoid and myeloid cells.
Involvement in disease	Note=A chromosomal aberration involving MLLT1 is associated with acute leukemias. Translocation t(11;19)(q23;p13.3) with MLL/HRX. The result is a rogue activator protein.
Sequence similarities	Contains 1 YEATS domain.
Cellular localization	Nucleus.

Images



ab111864 at 1/250 dilution staining MLLT1 in Human skin carcinoma by Immunohistochemistry Formalin-fixed, Paraffin-embedded tissue. Detection: DAB staining

Immunohistochemistry (Formalin/PFA-fixed paraffin-embedded sections) - MLLT1 antibody (ab111864)

Please note: All products are "FOR RESEARCH USE ONLY AND ARE NOT INTENDED FOR DIAGNOSTIC OR THERAPEUTIC USE"

Our Abpromise to you: Quality guaranteed and expert technical support

- Replacement or refund for products not performing as stated on the datasheet
- Valid for 12 months from date of delivery
- Response to your inquiry within 24 hours
- We provide support in Chinese, English, French, German, Japanese and Spanish
- Extensive multi-media technical resources to help you
- We investigate all quality concerns to ensure our products perform to the highest standards

If the product does not perform as described on this datasheet, we will offer a refund or replacement. For full details of the Abpromise, please visit <http://www.abcam.com/abpromise> or contact our technical team.

Terms and conditions

- Guarantee only valid for products bought direct from Abcam or one of our authorized distributors