

## Product datasheet

# Anti-MTCO1 antibody [5D11-1C9] - N-terminal ab219824

[2 Images](#)

### Overview

---

<b>Product name</b>	Anti-MTCO1 antibody [5D11-1C9] - N-terminal
<b>Description</b>	Mouse monoclonal [5D11-1C9] to MTCO1 - N-terminal
<b>Host species</b>	Mouse
<b>Tested applications</b>	<b>Suitable for:</b> WB
<b>Species reactivity</b>	<b>Reacts with:</b> Human
<b>Immunogen</b>	Synthetic peptide corresponding to Human MTCO1 (N terminal). Database link: <a href="#">P00395</a>
<b>Positive control</b>	WB: Mitochondria from cultured normal control human dermal fibroblasts neonatal (HDFn); Whole cell extract of cultured normal control human dermal fibroblasts neonatal (HDFn).

### Properties

---

<b>Form</b>	Liquid
<b>Storage instructions</b>	Shipped at 4°C. Store at +4°C short term (1-2 weeks). Upon delivery aliquot. Store at -20°C long term. Avoid freeze / thaw cycle.
<b>Storage buffer</b>	pH: 7.20 Preservative: 0.02% Sodium azide Constituents: 0.36% HEPES, 0.87% Sodium chloride
<b>Purification notes</b>	Purified from hybridoma cell culture supernatant by Protein L affinity chromatography from fetal bovine serum containing medium (Protein L does not bind bovine IgG).
<b>Clonality</b>	Monoclonal
<b>Clone number</b>	5D11-1C9
<b>Isotype</b>	IgG2a
<b>Light chain type</b>	kappa

### Applications

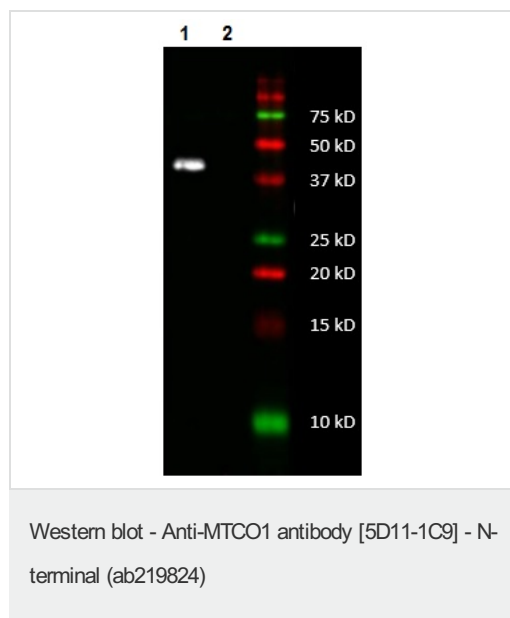
---

Our [Abpromise guarantee](#) covers the use of **ab219824** in the following tested applications.

The application notes include recommended starting dilutions; optimal dilutions/concentrations should be determined by the end user.

Application	Abreviews	Notes
WB		Use a concentration of 0.2 - 2 µg/ml. Detects a band of approximately 40 kDa (predicted molecular weight: 57 kDa).

## Images



**All lanes :** Anti-MTCO1 antibody [5D11-1C9]

- N-terminal (ab219824) at 0.1 µg/ml

**Lane 1 :** Mitochondria from cultured normal control human dermal fibroblasts neonatal (HDFn)

**Lane 2 :** Mitochondria from HDFn cells depleted of mtDNA by long-term proliferation in the presence of ethidium bromide

Lysates/proteins at 10 µg per lane.

### Secondary

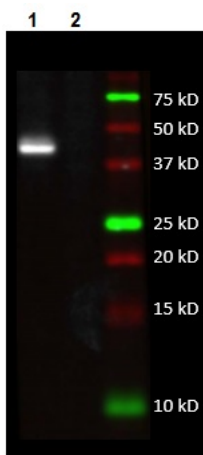
**All lanes :** HRP-labeled Goat-anti-mouse IgG

Developed using the ECL technique.

**Predicted band size:** 57 kDa

**Observed band size:** 40 kDa

Mitochondrial proteins solubilized in 2% SDS were separated by SDS-PAGE and then transferred to PVDF membranes in CAPS buffer.



Western blot - Anti-MTCO1 antibody [5D11-1C9] - N-terminal (ab219824)

**All lanes :** Anti-MTCO1 antibody [5D11-1C9]

- N-terminal (ab219824) at 2 µg/ml

**Lane 1 :** Whole cell extract of cultured normal control human dermal fibroblasts neonatal (HDFn)

**Lane 2 :** Whole cell extract HDFn-Rho0 cells depleted of mtDNA by long-term culture in the presence of ethidium bromide

Lysates/proteins at 15 µg per lane.

### Secondary

**All lanes :** HRP-labeled Goat-anti-mouse IgG

Developed using the ECL technique.

**Predicted band size:** 57 kDa

Proteins were separated by SDS-PAGE and then transferred to PVDF membranes in CAPS buffer.

**Please note:** All products are "FOR RESEARCH USE ONLY AND ARE NOT INTENDED FOR DIAGNOSTIC OR THERAPEUTIC USE"

### Our Abpromise to you: Quality guaranteed and expert technical support

- Replacement or refund for products not performing as stated on the datasheet
- Valid for 12 months from date of delivery
- Response to your inquiry within 24 hours
- We provide support in Chinese, English, French, German, Japanese and Spanish
- Extensive multi-media technical resources to help you
- We investigate all quality concerns to ensure our products perform to the highest standards

If the product does not perform as described on this datasheet, we will offer a refund or replacement. For full details of the Abpromise, please visit <http://www.abcam.com/abpromise> or contact our technical team.

### Terms and conditions

- Guarantee only valid for products bought direct from Abcam or one of our authorized distributors