

Product datasheet

Anti-MYLK2 antibody - N-terminal ab71827

[2 Images](#)

Overview

Product name	Anti-MYLK2 antibody - N-terminal
Description	Rabbit polyclonal to MYLK2 - N-terminal
Tested applications	Suitable for: ELISA, IHC-P, WB
Species reactivity	Reacts with: Human
Immunogen	Synthetic peptide from the N-terminal region of human MYLK2 conjugated to KLH
Positive control	Jurkat cell lysate. Human hepatocarcinoma tissue.

Properties

Form	Liquid
Storage instructions	Shipped at 4°C. Upon delivery aliquot and store at -20°C. Avoid freeze / thaw cycles.
Storage buffer	Preservative: 0.09% Sodium Azide Constituents: PBS
Purity	Protein G purified
Purification notes	ab71827 is purified through a protein G column, eluted with high and low pH buffers and neutralized immediately, followed by dialysis against PBS.
Clonality	Polyclonal
Isotype	IgG

Applications

Our [Abpromise guarantee](#) covers the use of **ab71827** in the following tested applications.

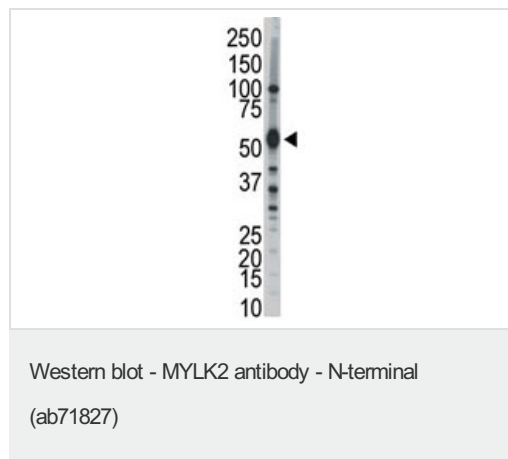
The application notes include recommended starting dilutions; optimal dilutions/concentrations should be determined by the end user.

Application	Abreviews	Notes
ELISA		1/1000.
IHC-P		1/50 - 1/100.
WB		1/100 - 1/500. Detects a band of approximately 55 kDa (predicted molecular weight: 65 kDa).

Target

Function	Implicated in the level of global muscle contraction and cardiac function. Phosphorylates a specific serine in the N-terminus of a myosin light chain.
Tissue specificity	Heart and skeletal muscles. Increased expression in the apical tissue compared to the interventricular septal tissue.
Involvement in disease	Defects in MYLK2 are a cause of familial hypertrophic cardiomyopathy (CMH) [MIM:192600]; also designated FHC or HCM. Familial hypertrophic cardiomyopathy is a hereditary heart disorder characterized by ventricular hypertrophy, which is usually asymmetric and often involves the interventricular septum. The symptoms include dyspnea, syncope, collapse, palpitations, and chest pain. They can be readily provoked by exercise. The disorder has inter- and intrafamilial variability ranging from benign to malignant forms with high risk of cardiac failure and sudden cardiac death.
Sequence similarities	Belongs to the protein kinase superfamily. CAMK Ser/Thr protein kinase family. Contains 1 protein kinase domain.
Cellular localization	Cytoplasm. Colocalizes with phosphorylated myosin light chain (RLCP) at filaments of the myofibrils.

Images



Anti-MYLK2 antibody - N-terminal (ab71827)
at 1/100 dilution + Jurkat cell lysate at 12.5 µg

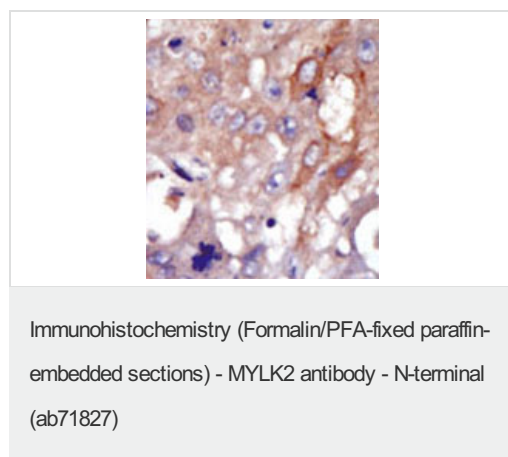
Secondary

HRP-anti-rabbit

Predicted band size : 65 kDa

Observed band size : 55 kDa

Additional bands at : 100 kDa, 32 kDa, 35 kDa, 40 kDa. We are unsure as to the identity of these extra bands.



ab71827 at 1/50 dilution, staining MYLK2 in human hepatocarcinoma by immunohistochemistry using formalin-fixed, paraffin-embedded tissue, followed by peroxidase-conjugated secondary antibody and AEC staining.

Our Abpromise to you: Quality guaranteed and expert technical support

- Replacement or refund for products not performing as stated on the datasheet
- Valid for 12 months from date of delivery
- Response to your inquiry within 24 hours

- We provide support in Chinese, English, French, German, Japanese and Spanish
- Extensive multi-media technical resources to help you
- We investigate all quality concerns to ensure our products perform to the highest standards

If the product does not perform as described on this datasheet, we will offer a refund or replacement. For full details of the Abpromise, please visit <http://www.abcam.com/abpromise> or contact our technical team.

Terms and conditions

- Guarantee only valid for products bought direct from Abcam or one of our authorized distributors