

Product datasheet

Anti-Met (c-Met) antibody - C-terminal, prediluted
ab27492

1 Image

Overview

Product name	Anti-Met (c-Met) antibody - C-terminal, prediluted
Description	Rabbit polyclonal to Met (c-Met) - C-terminal, prediluted
Host species	Rabbit
Tested applications	Suitable for: IHC-P
Species reactivity	Reacts with: Human
Immunogen	Synthetic peptide corresponding to Human Met (c-Met) (C terminal). Database link: P08581
Positive control	IHC-P: Human ovarian carcinoma tissue.
General notes	For manual IHC only.

Properties

Form	Prediluted
Storage instructions	Shipped at 4°C. Store at +4°C. Do Not Freeze.
Storage buffer	pH: 7.6 Preservative: 0.099% Sodium azide Constituents: 1% BSA, Tris buffered saline
Purity	Immunogen affinity purified
Clonality	Polyclonal
Isotype	IgG

Applications

Our [Abpromise guarantee](#) covers the use of **ab27492** in the following tested applications.

The application notes include recommended starting dilutions; optimal dilutions/concentrations should be determined by the end user.

Application	Abreviews	Notes
-------------	-----------	-------

Application	Abreviews	Notes
-------------	-----------	-------

IHC-P		<p>1/1.</p> <p>Ready to use.</p> <p>Boil tissue section in Citrate buffer, pH 6.0 for 10 min followed by cooling at room temperature for 20 min.</p> <p>Primary antibody incubation for 10 minutes at room temperature.</p>
-------	--	---

Target

Function

Receptor for hepatocyte growth factor and scatter factor. Has a tyrosine-protein kinase activity. Functions in cell proliferation, scattering, morphogenesis and survival.

Involvement in disease

Note=Activation of MET after rearrangement with the TPR gene produces an oncogenic protein.
 Note=Defects in MET may be associated with gastric cancer.

Defects in MET are a cause of hepatocellular carcinoma (HCC) [MIM:114550].

Defects in MET are a cause of renal cell carcinoma papillary (RCCP) [MIM:605074]. It is a subtype of renal cell carcinoma tending to show a tubulo-papillary architecture formed by numerous, irregular, finger-like projections of connective tissue. Renal cell carcinoma is a heterogeneous group of sporadic or hereditary carcinoma derived from cells of the proximal renal tubular epithelium. It is subclassified into common renal cell carcinoma (clear cell, non-papillary carcinoma), papillary renal cell carcinoma, chromophobe renal cell carcinoma, collecting duct carcinoma with medullary carcinoma of the kidney, and unclassified renal cell carcinoma.

Note=A common allele in the promoter region of the MET shows genetic association with susceptibility to autism in some families. Functional assays indicate a decrease in MET promoter activity and altered binding of specific transcription factor complexes.

Note=MET activating mutations may be involved in the development of a highly malignant, metastatic syndrome known as cancer of unknown primary origin (CUP) or primary occult malignancy. Systemic neoplastic spread is generally a late event in cancer progression. However, in some instances, distant dissemination arises at a very early stage, so that metastases reach clinical relevance before primary lesions. Sometimes, the primary lesions cannot be identified in spite of the progresses in the diagnosis of malignancies.

Sequence similarities

Belongs to the protein kinase superfamily. Tyr protein kinase family.

Contains 3 IPT/TIG domains.

Contains 1 protein kinase domain.

Contains 1 Sema domain.

Domain

The kinase domain is involved in SPSB1 binding.

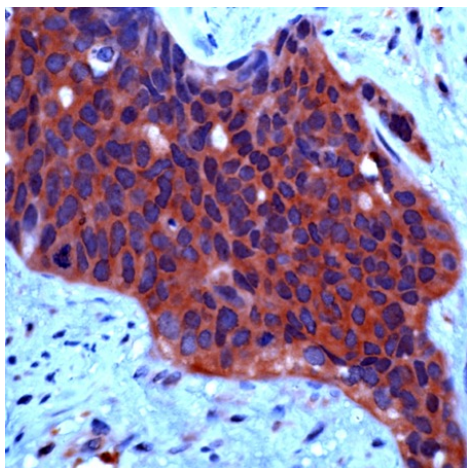
Post-translational modifications

Dephosphorylated by PTPRJ at Tyr-1349 and Tyr-1365.

Cellular localization

Membrane.

Images



Formalin-fixed, paraffin-embedded human ovarian carcinoma tissue stained for Met (c-Met) using ab27492 in immunohistochemical analysis.

Immunohistochemistry (Formalin/PFA-fixed paraffin-embedded sections) - Anti-Met (c-Met) antibody - C-terminal, prediluted (ab27492)

Please note: All products are "FOR RESEARCH USE ONLY AND ARE NOT INTENDED FOR DIAGNOSTIC OR THERAPEUTIC USE"

Our Abpromise to you: Quality guaranteed and expert technical support

- Replacement or refund for products not performing as stated on the datasheet
- Valid for 12 months from date of delivery
- Response to your inquiry within 24 hours
- We provide support in Chinese, English, French, German, Japanese and Spanish
- Extensive multi-media technical resources to help you
- We investigate all quality concerns to ensure our products perform to the highest standards

If the product does not perform as described on this datasheet, we will offer a refund or replacement. For full details of the Abpromise, please visit <http://www.abcam.com/abpromise> or contact our technical team.

Terms and conditions

- Guarantee only valid for products bought direct from Abcam or one of our authorized distributors