

Product datasheet

Anti-Metabotropic Glutamate Receptor 1 antibody, prediluted ab27192

[1 References](#) [1 Image](#)

Overview

Product name	Anti-Metabotropic Glutamate Receptor 1 antibody, prediluted
Description	Rabbit polyclonal to Metabotropic Glutamate Receptor 1, prediluted
Host species	Rabbit
Specificity	This antibody recognises Metabotropic Glutamate Receptor 1.
Tested applications	Suitable for: IHC-P
Species reactivity	Reacts with: Human Predicted to work with: Mouse, Rat, Chicken, Monkey ▲
Immunogen	A synthetic peptide from C terminus of human Metabotropic Glutamate Receptor 1.
Positive control	Human brain and human melanoma for Immunohistochemistry.

Properties

Form	Prediluted
Storage instructions	Shipped at 4°C. Store at +4°C.
Storage buffer	Preservative: 0.1% Sodium Azide Constituents: 1% BSA, 50mM Tris, pH 7.6
Purity	Immunogen affinity purified
Clonality	Polyclonal
Isotype	IgG

Applications

Our [Abpromise guarantee](#) covers the use of **ab27192** in the following tested applications.

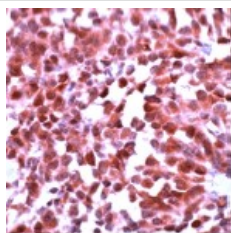
The application notes include recommended starting dilutions; optimal dilutions/concentrations should be determined by the end user.

Application	Abreviews	Notes
IHC-P		1/1. Perform heat mediated antigen retrieval before commencing with IHC staining protocol.

Target

Function	Receptor for glutamate. The activity of this receptor is mediated by a G-protein that activates a phosphatidylinositol-calcium second messenger system. May participate in the central action of glutamate in the CNS, such as long-term potentiation in the hippocampus and long-term depression in the cerebellum.
Sequence similarities	Belongs to the G-protein coupled receptor 3 family.
Cellular localization	Cell membrane.

Images



Ab27192, prediluted, staining Metabotropic Glutamate Receptor 1 in Paraffin embedded formalin fixed human brain tissue section.

Immunohistochemistry (Formalin/PFA-fixed paraffin-embedded sections) - Metabotropic Glutamate Receptor 1 antibody, prediluted (ab27192)

Please note: All products are "FOR RESEARCH USE ONLY AND ARE NOT INTENDED FOR DIAGNOSTIC OR THERAPEUTIC USE"

Our Abpromise to you: Quality guaranteed and expert technical support

- Replacement or refund for products not performing as stated on the datasheet
- Valid for 12 months from date of delivery
- Response to your inquiry within 24 hours
- We provide support in Chinese, English, French, German, Japanese and Spanish
- Extensive multi-media technical resources to help you
- We investigate all quality concerns to ensure our products perform to the highest standards

If the product does not perform as described on this datasheet, we will offer a refund or replacement. For full details of the Abpromise, please visit <http://www.abcam.com/abpromise> or contact our technical team.

Terms and conditions

- Guarantee only valid for products bought direct from Abcam or one of our authorized distributors