

## Product datasheet

# Anti-Metabotropic Glutamate Receptor 7 antibody ab53705

★★★★★ 1 Abreviews 1 References 3 Images

### Overview

<b>Product name</b>	Anti-Metabotropic Glutamate Receptor 7 antibody
<b>Description</b>	Rabbit polyclonal to Metabotropic Glutamate Receptor 7
<b>Host species</b>	Rabbit
<b>Specificity</b>	ab53705 detects endogenous levels of total Metabotropic Glutamate Receptor 7 protein
<b>Tested applications</b>	<b>Suitable for:</b> IP, WB, IHC-P, ELISA
<b>Species reactivity</b>	<b>Reacts with:</b> Human <b>Predicted to work with:</b> Mouse, Rat
<b>Immunogen</b>	Synthetic peptide derived from human Metabotropic Glutamate Receptor 7.
<b>Positive control</b>	Human brain tissue and HuvEc cell extracts.

### Properties

<b>Form</b>	Liquid
<b>Storage instructions</b>	Shipped at 4°C. Upon delivery aliquot and store at -20°C. Avoid freeze / thaw cycles.
<b>Storage buffer</b>	Preservative: 0.02% Sodium Azide Constituents: 50% Glycerol, PBS (without Mg <sup>2+</sup> and Ca <sup>2+</sup> ), 150mM Sodium chloride, pH 7.4
<b>Purity</b>	Immunogen affinity purified
<b>Clonality</b>	Polyclonal
<b>Isotype</b>	IgG

### Applications

Our [Abpromise guarantee](#) covers the use of **ab53705** in the following tested applications.

The application notes include recommended starting dilutions; optimal dilutions/concentrations should be determined by the end user.

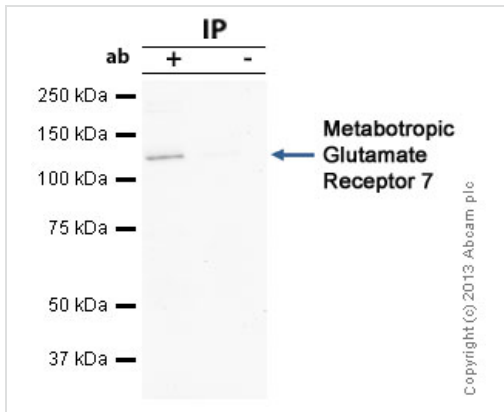
Application	Abreviews	Notes
IP		Use a concentration of 5 µg/ml.

Application	Abreviews	Notes
WB		1/500 - 1/1000. Detects a band of approximately 102 kDa (predicted molecular weight: 102 kDa).
IHC-P	★★★★★	Use at an assay dependent concentration.
ELISA		1/20000.

## Target

<b>Function</b>	Receptor for glutamate. The activity of this receptor is mediated by a G-protein that inhibits adenylate cyclase activity.
<b>Tissue specificity</b>	Expressed in many areas of the brain, especially in the cerebral cortex, hippocampus, and cerebellum. Expression of GRM7 isoforms in non-neuronal tissues appears to be restricted to isoform 3 and isoform 4.
<b>Sequence similarities</b>	Belongs to the G-protein coupled receptor 3 family.
<b>Cellular localization</b>	Cell membrane.

## Images



Immunoprecipitation - Anti-Metabotropic Glutamate Receptor 7 antibody (ab53705)

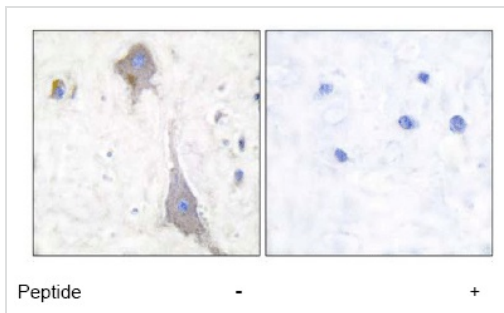
Metabotropic Glutamate Receptor 7 was immunoprecipitated using 0.5mg Rat Brain tissue extract, 5µg of Rabbit polyclonal to Metabotropic Glutamate Receptor 7 and 50µl of protein G magnetic beads (+). No antibody was added to the control (-).

The antibody was incubated under agitation with Protein G beads for 10min, Rat Brain tissue extract lysate diluted in RIPA buffer was added to each sample and incubated for a further 10min under agitation.

Proteins were eluted by addition of 40µl SDS loading buffer and incubated for 10min at 70°C; 10µl of each sample was separated on a SDS PAGE gel, transferred to a nitrocellulose membrane, blocked with 5% BSA and probed with ab53705.

Secondary: Mouse monoclonal [SB62a] Secondary Antibody to Rabbit IgG light chain (HRP) (ab99697).

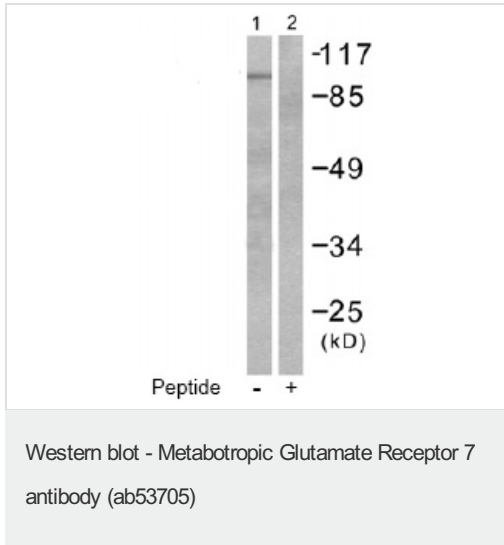
Band: 110kDa; Metabotropic Glutamate Receptor 7



Immunohistochemistry (Paraffin-embedded sections)  
- Metabotropic Glutamate Receptor 7 antibody (ab53705)

ab53705 at 1/50 dilution staining Metabotropic Glutamate Receptor 7 in human brain by Immunohistochemistry, Paraffin embedded tissue, in the absence or presence of the immunising peptide.

ab53705 at 1/50 dilution staining Metabotropic Glutamate Receptor 7 in human brain by Immunohistochemistry, Paraffin embedded tissue, in the absence or presence of the immunising peptide.



**All lanes :** Anti-Metabotropic Glutamate Receptor 7 antibody (ab53705) at 1/500 dilution

**Lane 1 :** HuvEc cell extract

**Lane 2 :** HuvEc cell extract with immunising peptide

**Predicted band size:** 102 kDa

**Observed band size:** 102 kDa

**Please note:** All products are "FOR RESEARCH USE ONLY AND ARE NOT INTENDED FOR DIAGNOSTIC OR THERAPEUTIC USE"

### Our Abpromise to you: Quality guaranteed and expert technical support

- Replacement or refund for products not performing as stated on the datasheet
- Valid for 12 months from date of delivery
- Response to your inquiry within 24 hours
- We provide support in Chinese, English, French, German, Japanese and Spanish
- Extensive multi-media technical resources to help you
- We investigate all quality concerns to ensure our products perform to the highest standards

If the product does not perform as described on this datasheet, we will offer a refund or replacement. For full details of the Abpromise, please visit <http://www.abcam.com/abpromise> or contact our technical team.

### Terms and conditions

- Guarantee only valid for products bought direct from Abcam or one of our authorized distributors