

Product datasheet

Anti-Myosin Light Chain 2 antibody [EPR3741] ab92721

Recombinant **RabMAB**

★★★★☆ 5 Abreviews 11 References 11 Images

Overview

Product name	Anti-Myosin Light Chain 2 antibody [EPR3741]
Description	Rabbit monoclonal [EPR3741] to Myosin Light Chain 2
Host species	Rabbit
Tested applications	Suitable for: IHC-Fr, WB, IP, IHC-P Unsuitable for: Flow Cyt
Species reactivity	Reacts with: Mouse, Rat, Human
Immunogen	Synthetic peptide (the amino acid sequence is considered to be commercially sensitive) corresponding to Human Myosin Light Chain 2 aa 150-250.
Positive control	WB: Fetal heart, fetal skeletal muscle, Human heart, mouse heart and rat heart lysates IHC-P: Human heart muscle

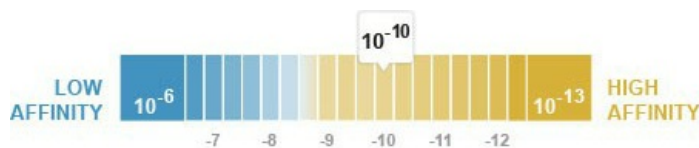
General notes

Our RabMAB[®] technology is a patented hybridoma-based technology for making rabbit monoclonal antibodies. For details on our patents, please refer to [RabMab[®] patents](#)

This product is a recombinant rabbit monoclonal antibody.

Properties

Form	Liquid
Storage instructions	Shipped at 4°C. Store at -20°C. Stable for 12 months at -20°C.
Dissociation constant (K_D)	K _D = 2.78 x 10 ⁻¹⁰ M



[Learn more about K_D](#)

Storage buffer	PBS 49%, Sodium azide 0.01%, Glycerol 50%, BSA 0.05%
Purity	Tissue culture supernatant
Clonality	Monoclonal

Clone number EPR3741

Isotype IgG

Applications

Our [Abpromise guarantee](#) covers the use of **ab92721** in the following tested applications.

The application notes include recommended starting dilutions; optimal dilutions/concentrations should be determined by the end user.

Application	Abreviews	Notes
IHC-Fr		Use at an assay dependent concentration. PubMed: 23365102
WB	★★★★☆	1/5000. Predicted molecular weight: 19 kDa.
IP		1/50.
IHC-P		1/100 - 1/250. Perform heat mediated antigen retrieval before commencing with IHC staining protocol. The use of an HRP/AP polymerized secondary antibody is recommended.

Application notes Is unsuitable for Flow Cyt.

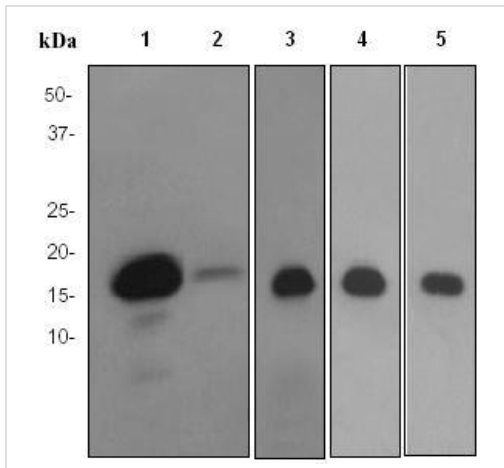
Target

Involvement in disease Defects in MYL2 are the cause of cardiomyopathy familial hypertrophic type 10 (CMH10) [MIM:608758]. Familial hypertrophic cardiomyopathy is a hereditary heart disorder characterized by ventricular hypertrophy, which is usually asymmetric and often involves the interventricular septum. The symptoms include dyspnea, syncope, collapse, palpitations, and chest pain. They can be readily provoked by exercise. The disorder has inter- and intrafamilial variability ranging from benign to malignant forms with high risk of cardiac failure and sudden cardiac death. Defects in MYL2 are the cause of cardiomyopathy familial hypertrophic with mid-left ventricular chamber type 2 (MVC2) [MIM:608758]. MVC2 is a very rare variant of familial hypertrophic cardiomyopathy, characterized by mid-left ventricular chamber thickening.

Sequence similarities Contains 3 EF-hand domains.

Post-translational modifications N-terminus is methylated by METTL11A/NTM1.

Images



Western blot - Myosin Light Chain 2 antibody
[EPR3741] (ab92721)

All lanes : Anti-Myosin Light Chain 2 antibody
[EPR3741] (ab92721) at 1/10000 dilution

Lane 1 : Fetal heart lysate

Lane 2 : Fetal skeletal muscle lysate

Lane 3 : Human heart lysate

Lane 4 : Mouse heart lysate

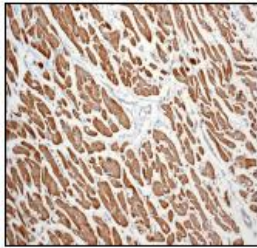
Lane 5 : Rat heart lysate

Lysates/proteins at 10 µg per lane.

Secondary

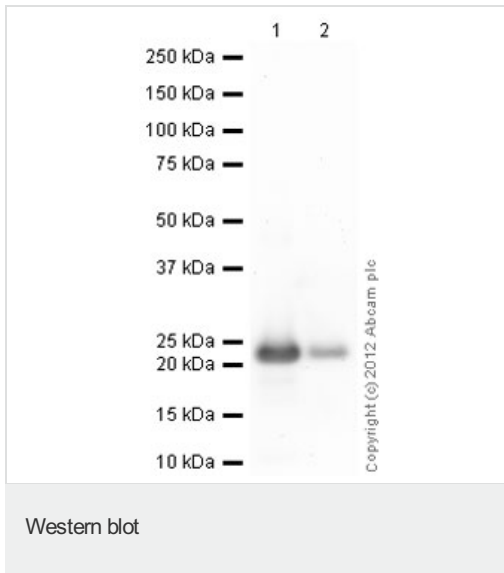
All lanes : HRP labelled goat anti-rabbit IgG
at 1/2000 dilution

Predicted band size: 19 kDa



Immunohistochemistry (Formalin/PFA-fixed paraffin-
embedded sections) - Myosin Light Chain 2 antibody
[EPR3741] (ab92721)

ab92721, at a 1/100 dilution, staining Myosin
Light Chain 2 in paraffin embedded Human
heart muscle by Immunohistochemistry.



All lanes : Anti-Myosin Light Chain 2 antibody [EPR3741] (ab92721) at 1/10000 dilution

Lane 1 : Recombinant Human Myosin Light Chain 2 protein (ab79185) at 0.1 μ g

Lane 2 : Recombinant Human Myosin Light Chain 2 protein (ab79185) at 0.01 μ g

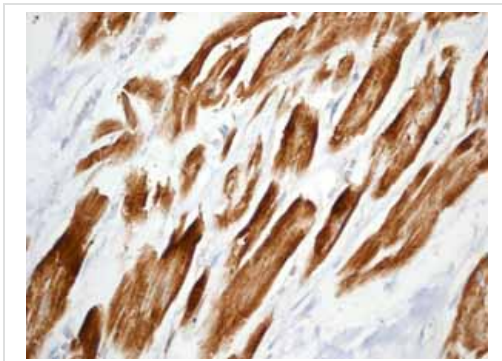
Secondary

All lanes : Goat Anti-Rabbit IgG H&L (HRP) preadsorbed (ab97080) at 1/5000 dilution

Developed using the ECL technique.

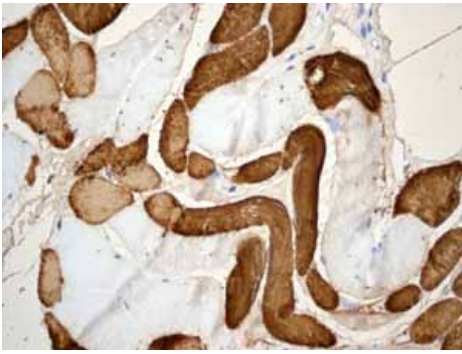
Performed under reducing conditions.

Exposure time: 4 minutes



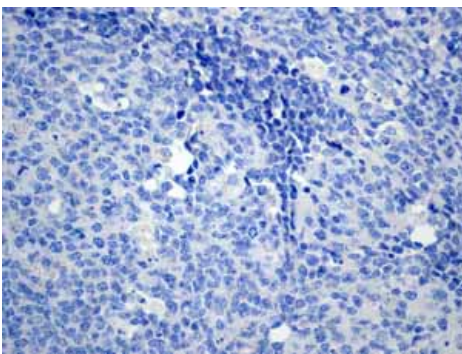
ab92721 showing positive staining in Heart muscle tissue.

Immunohistochemistry (Formalin/PFA-fixed paraffin-embedded sections)-Anti-Myosin Light Chain 2 antibody [EPR3741](ab92721)



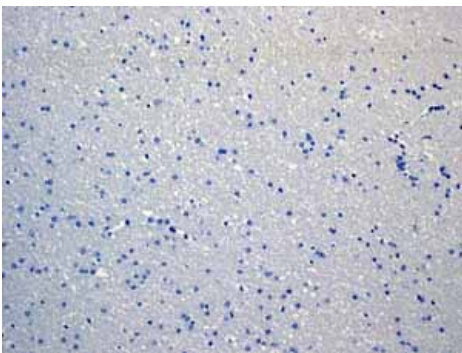
ab92721 showing positive staining in Skeletal muscle tissue.

Immunohistochemistry (Formalin/PFA-fixed paraffin-embedded sections)-Anti-Myosin Light Chain 2 antibody [EPR3741](ab92721)



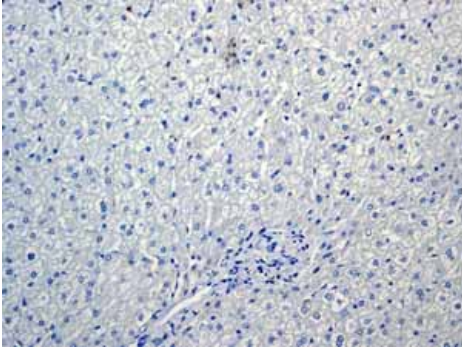
ab92721 showing negative staining in Normal tonsil tissue.

Immunohistochemistry (Formalin/PFA-fixed paraffin-embedded sections)-Anti-Myosin Light Chain 2 antibody [EPR3741](ab92721)



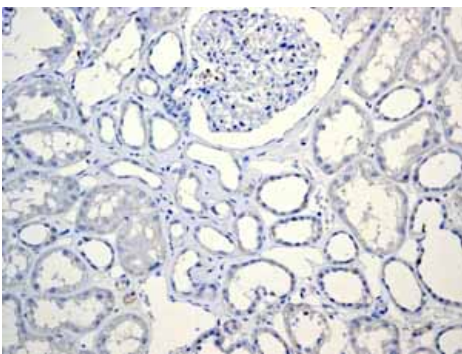
ab92721 showing negative staining in Normal brain tissue.

Immunohistochemistry (Formalin/PFA-fixed paraffin-embedded sections)-Anti-Myosin Light Chain 2 antibody [EPR3741](ab92721)



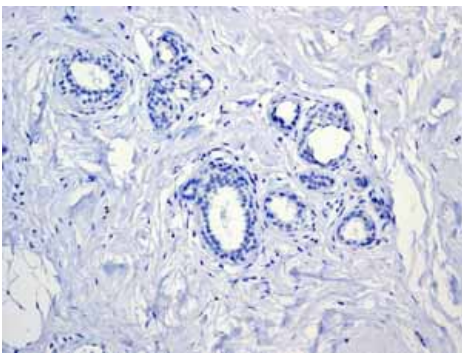
ab92721 showing negative staining in Normal liver tissue.

Immunohistochemistry (Formalin/PFA-fixed paraffin-embedded sections)-Anti-Myosin Light Chain 2 antibody [EPR3741](ab92721)



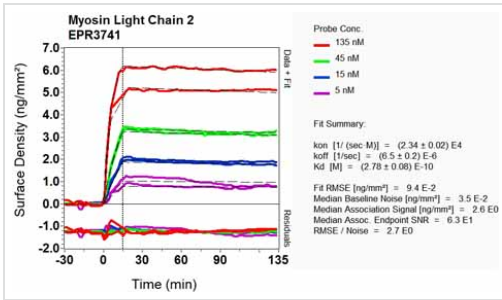
ab92721 showing negative staining in Normal kidney tissue.

Immunohistochemistry (Formalin/PFA-fixed paraffin-embedded sections)-Anti-Myosin Light Chain 2 antibody [EPR3741](ab92721)



ab92721 showing negative staining in Normal breast tissue.

Immunohistochemistry (Formalin/PFA-fixed paraffin-embedded sections) - Anti-Myosin Light Chain 2 antibody [EPR3741] (ab92721)



Other-Anti-Myosin Light Chain 2 antibody
 [EPR3741](ab92721)

Equilibrium dissociation constant (K_D)

Learn more about K_D

[Click here to learn more about \$K_D\$](#)

Please note: All products are "FOR RESEARCH USE ONLY AND ARE NOT INTENDED FOR DIAGNOSTIC OR THERAPEUTIC USE"

Our Abpromise to you: Quality guaranteed and expert technical support

- Replacement or refund for products not performing as stated on the datasheet
- Valid for 12 months from date of delivery
- Response to your inquiry within 24 hours
- We provide support in Chinese, English, French, German, Japanese and Spanish
- Extensive multi-media technical resources to help you
- We investigate all quality concerns to ensure our products perform to the highest standards

If the product does not perform as described on this datasheet, we will offer a refund or replacement. For full details of the Abpromise, please visit <http://www.abcam.com/abpromise> or contact our technical team.

Terms and conditions

- Guarantee only valid for products bought direct from Abcam or one of our authorized distributors