

Product datasheet

Anti-NCF1 antibody ab63361

2 Images

Overview

<b>Product name</b>	Anti-NCF1 antibody
<b>Description</b>	Rabbit polyclonal to NCF1
<b>Host species</b>	Rabbit
<b>Specificity</b>	This antibody detects endogenous levels of total Neutrophil Cytosol Factor 1 protein
<b>Tested applications</b>	<b>Suitable for:</b> ELISA, ICC/IF, WB
<b>Species reactivity</b>	<b>Reacts with:</b> Human
<b>Immunogen</b>	Synthetic non-phosphopeptide derived from human NCF1 around the phosphorylation site of serine 304 (R-S-S <sup>P</sup> -I-R)
<b>Positive control</b>	UV treated COS7 cell extracts; HeLa cells

Properties

<b>Form</b>	Liquid
<b>Storage instructions</b>	Shipped at 4°C. Store at -20°C. Stable for 12 months at -20°C.
<b>Storage buffer</b>	Preservative: 0.02% Sodium Azide Constituents: 50% Glycerol, PBS, 150mM Sodium chloride, pH 7.4
<b>Purity</b>	Immunogen affinity purified
<b>Clonality</b>	Polyclonal
<b>Isotype</b>	IgG

Applications

Our [Abpromise guarantee](#) covers the use of **ab63361** in the following tested applications.

The application notes include recommended starting dilutions; optimal dilutions/concentrations should be determined by the end user.

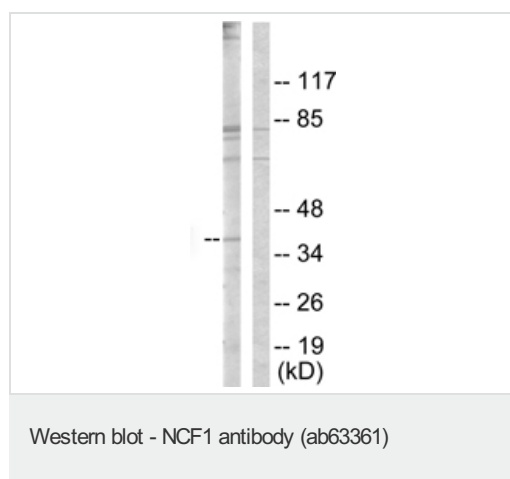
Application	Abreviews	Notes
ELISA		1/10000.
ICC/IF		1/500 - 1/1000.

Application	Abreviews	Notes
WB		1/500 - 1/1000. Detects a band of approximately 45 kDa (predicted molecular weight: 45 kDa).

## Target

<b>Function</b>	NCF2, NCF1, and a membrane bound cytochrome b558 are required for activation of the latent NADPH oxidase (necessary for superoxide production).
<b>Involvement in disease</b>	Defects in NCF1 are the cause of chronic granulomatous disease autosomal recessive cytochrome-b-positive type 1 (CGD1) [MIM:233700]. Chronic granulomatous disease is a genetically heterogeneous disorder characterized by the inability of neutrophils and phagocytes to kill microbes that they have ingested. Patients suffer from life-threatening bacterial/fungal infections.
<b>Sequence similarities</b>	Contains 1 PX (phox homology) domain. Contains 2 SH3 domains.
<b>Cellular localization</b>	Cytoplasm.

## Images



**All lanes :** Anti-NCF1 antibody (ab63361) at 1/500 dilution

**Lane 1 :** extracts from COS7 cells, treated with UV (15mins)

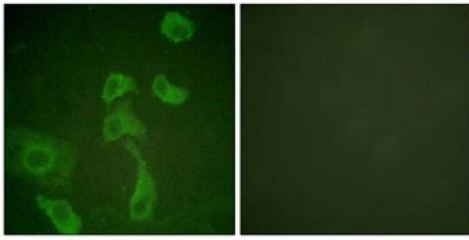
**Lane 2 :** extracts from COS7 cells, treated with UV (15mins) with immunising peptide at 10 µg

Lysates/proteins at 30 µg per lane.

**Predicted band size:** 45 kDa

**Observed band size:** 45 kDa

**Additional bands at:** 70 kDa (possible non-specific binding), 84 kDa (possible non-specific binding)



Peptide - +

Immunocytochemistry/ Immunofluorescence - NCF1 antibody (ab63361)

Immunofluorescence analysis of NCF1 expression in HeLa cells, using 1/500 ab63361. Left: untreated cells. Right: cells treated with immunising peptide.

**Please note:** All products are "FOR RESEARCH USE ONLY AND ARE NOT INTENDED FOR DIAGNOSTIC OR THERAPEUTIC USE"

### Our Abpromise to you: Quality guaranteed and expert technical support

- Replacement or refund for products not performing as stated on the datasheet
- Valid for 12 months from date of delivery
- Response to your inquiry within 24 hours
- We provide support in Chinese, English, French, German, Japanese and Spanish
- Extensive multi-media technical resources to help you
- We investigate all quality concerns to ensure our products perform to the highest standards

If the product does not perform as described on this datasheet, we will offer a refund or replacement. For full details of the Abpromise, please visit <http://www.abcam.com/abpromise> or contact our technical team.

### Terms and conditions

- Guarantee only valid for products bought direct from Abcam or one of our authorized distributors