

Product datasheet

Anti-NMU antibody ab92693

2 Images

Overview

Product name	Anti-NMU antibody
Description	Rabbit polyclonal to NMU
Host species	Rabbit
Tested applications	Suitable for: WB, ELISA, IHC-P
Species reactivity	Reacts with: Human
Immunogen	Synthetic peptide derived from internal sequence of Human NMU.
Positive control	Extracts from HepG2 cells; Human skeletal muscle tissue

Properties

Form	Liquid
Storage instructions	Shipped at 4°C. Store at -20°C. Stable for 12 months at -20°C.
Storage buffer	Preservative: 0.02% Sodium Azide Constituents: 50% Glycerol, PBS (without Mg ²⁺ and Ca ²⁺), 150mM Sodium chloride, pH 7.4
Purity	Immunogen affinity purified
Purification notes	ab92693 was purified from rabbit antiserum by affinity-chromatography using an epitope-specific immunogen.
Clonality	Polyclonal
Isotype	IgG

Applications

Our [Abpromise guarantee](#) covers the use of **ab92693** in the following tested applications.

The application notes include recommended starting dilutions; optimal dilutions/concentrations should be determined by the end user.

Application	Abreviews	Notes
WB		
ELISA		

Application	Abreviews	Notes
-------------	-----------	-------

IHC-P

Application notes

ELISA: 1/40000.
 IHC-P: 1/50 - 1/100.
 WB: 1/500 - 1/1000. Predicted molecular weight: 20 kDa.

Not yet tested in other applications.
 Optimal dilutions/concentrations should be determined by the end user.

Target

Function

Stimulates muscle contractions of specific regions of the gastrointestinal tract. In humans, NmU stimulates contractions of the ileum and urinary bladder.

Tissue specificity

Expressed throughout the enteric nervous system with highest levels being found in the jejunum.

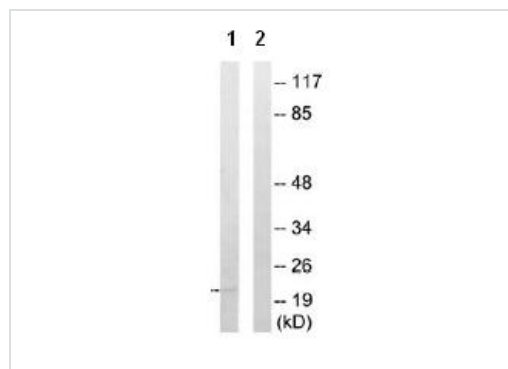
Sequence similarities

Belongs to the NmU family.

Cellular localization

Secreted.

Images



Western blot - Anti-NMU antibody (ab92693)

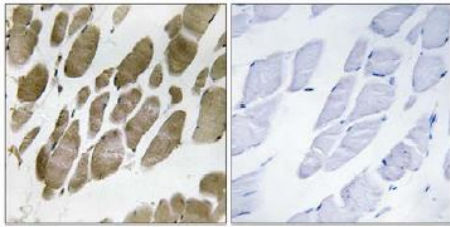
All lanes : Anti-NMU antibody (ab92693) at 1/500 dilution

Lane 1 : Extracts from HepG2 cells

Lane 2 : Extracts from HepG2 cells with immunising peptide at 10 µg

Lysates/proteins at 30 µg per lane.

Predicted band size: 20 kDa



Peptide - +

Immunohistochemistry (Formalin/PFA-fixed paraffin-embedded sections) - Anti-NMU antibody (ab92693)

ab92693, at 1/50 dilution, staining NMU in paraffin-embedded Human skeletal muscle tissue by Immunohistochemistry, in the absence (left) and presence (right) of the immunising peptide.

Please note: All products are "FOR RESEARCH USE ONLY AND ARE NOT INTENDED FOR DIAGNOSTIC OR THERAPEUTIC USE"

Our Abpromise to you: Quality guaranteed and expert technical support

- Replacement or refund for products not performing as stated on the datasheet
- Valid for 12 months from date of delivery
- Response to your inquiry within 24 hours
- We provide support in Chinese, English, French, German, Japanese and Spanish
- Extensive multi-media technical resources to help you
- We investigate all quality concerns to ensure our products perform to the highest standards

If the product does not perform as described on this datasheet, we will offer a refund or replacement. For full details of the Abpromise, please visit <http://www.abcam.com/abpromise> or contact our technical team.

Terms and conditions

- Guarantee only valid for products bought direct from Abcam or one of our authorized distributors