


Product datasheet

Anti-NSG2 antibody ab111377

1 Image

Overview

Product name	Anti-NSG2 antibody
Description	Rabbit polyclonal to NSG2
Host species	Rabbit
Specificity	ab111377 detects endogenous levels of total NSG2 protein
Tested applications	Suitable for: IHC-P
Species reactivity	Reacts with: Human Predicted to work with: Mouse 
Immunogen	Synthetic peptide derived from an internal region of Human NSG2.
Positive control	Human brain tissue.

Properties

Form	Liquid
Storage instructions	Shipped at 4°C. Store at -20°C. Stable for 12 months at -20°C.
Storage buffer	pH: 7.40 Preservative: 0.02% Sodium azide Constituents: 49.1% PBS, 0.88% Sodium chloride, 50% Glycerol Note: without Mg2+ and Ca2+
Purity	Immunogen affinity purified
Purification notes	ab111377 was affinity-purified from Rabbit antiserum by affinity-chromatography using epitope-specific immunogen.
Clonality	Polyclonal
Isotype	IgG

Applications

Our [Abpromise guarantee](#) covers the use of **ab111377** in the following tested applications.

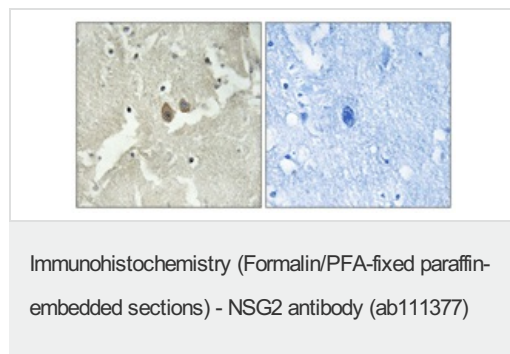
The application notes include recommended starting dilutions; optimal dilutions/concentrations should be determined by the end user.

Application	Abreviews	Notes
IHC-P		1/50 - 1/100. Perform heat mediated antigen retrieval with citrate buffer pH 6 before commencing with IHC staining protocol.

Target

Sequence similarities	Belongs to the NSG family.
Cellular localization	Cytoplasmic vesicle membrane. Golgi apparatus > Golgi stack membrane. Endosome > multivesicular body membrane. Mainly Golgi stack, but also found in small vacuolar organelles and multivesicular bodies.

Images



ab111377 at 1/50 dilution staining NSG2 in paraffin-embedded Human Brain tissue by Immunohistochemistry. The image on the right is treated with the synthesized peptide.

Please note: All products are "FOR RESEARCH USE ONLY AND ARE NOT INTENDED FOR DIAGNOSTIC OR THERAPEUTIC USE"

Our Abpromise to you: Quality guaranteed and expert technical support

- Replacement or refund for products not performing as stated on the datasheet
- Valid for 12 months from date of delivery
- Response to your inquiry within 24 hours
- We provide support in Chinese, English, French, German, Japanese and Spanish
- Extensive multi-media technical resources to help you
- We investigate all quality concerns to ensure our products perform to the highest standards

If the product does not perform as described on this datasheet, we will offer a refund or replacement. For full details of the Abpromise, please visit <http://www.abcam.com/abpromise> or contact our technical team.

Terms and conditions

- Guarantee only valid for products bought direct from Abcam or one of our authorized distributors