


Product datasheet

Anti-NSL1 antibody ab92532

1 Image

Overview

Product name	Anti-NSL1 antibody
Description	Rabbit polyclonal to NSL1
Host species	Rabbit
Tested applications	Suitable for: IHC-P
Species reactivity	Reacts with: Human Predicted to work with: Chimpanzee, Gorilla, Orangutan 
Immunogen	Synthetic peptide, corresponding to a region between residue 150 and 200 of human NSL1 (NP_056286.2).
Positive control	Human breast carcinoma tissue.

Properties

Form	Liquid
Storage instructions	Shipped at 4°C. Upon delivery aliquot and store at -20°C. Avoid freeze / thaw cycles.
Storage buffer	Preservative: 0.09% Sodium Azide Constituents: 0.1% BSA, Tris buffered saline
Purity	Immunogen affinity purified
Clonality	Polyclonal
Isotype	IgG

Applications

Our [Abpromise guarantee](#) covers the use of **ab92532** in the following tested applications.

The application notes include recommended starting dilutions; optimal dilutions/concentrations should be determined by the end user.

Application	Abreviews	Notes
-------------	-----------	-------

IHC-P

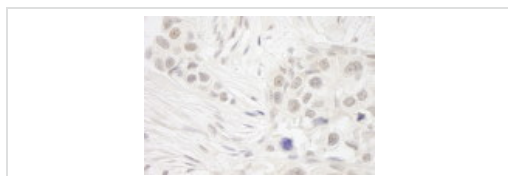
Application notes IHC-P: 1/100 - 1/500.

Not yet tested in other applications.
Optimal dilutions/concentrations should be determined by the end user.

Target

Function	Part of the MIS12 complex which is required for normal chromosome alignment and segregation and kinetochore formation during mitosis.
Post-translational modifications	Phosphorylated upon DNA damage, probably by ATM or ATR.
Cellular localization	Nucleus. Chromosome > centromere > kinetochore. Associated with the kinetochore.

Images



Immunohistochemistry (Formalin/PFA-fixed paraffin-embedded sections) - Anti-NSL1 antibody (ab92532)

ab92532 at 1/250 dilution staining NSL1 in Human breast carcinoma by Immunohistochemistry, Formalin-fixed, Paraffin-embedded tissue. Detection: DAB staining.

Please note: All products are "FOR RESEARCH USE ONLY AND ARE NOT INTENDED FOR DIAGNOSTIC OR THERAPEUTIC USE"

Our Abpromise to you: Quality guaranteed and expert technical support

- Replacement or refund for products not performing as stated on the datasheet
- Valid for 12 months from date of delivery
- Response to your inquiry within 24 hours
- We provide support in Chinese, English, French, German, Japanese and Spanish
- Extensive multi-media technical resources to help you
- We investigate all quality concerns to ensure our products perform to the highest standards

If the product does not perform as described on this datasheet, we will offer a refund or replacement. For full details of the Abpromise, please visit <http://www.abcam.com/abpromise> or contact our technical team.

Terms and conditions

- Guarantee only valid for products bought direct from Abcam or one of our authorized distributors