

Product datasheet

Natural Human LRG1 protein ab115506

1 Image

Overview

Product name	Natural Human LRG1 protein
Protein length	Full length protein

Description

Nature	Native
Source	Native

Amino Acid Sequence

Accession	P02750
Species	Human
Molecular weight	34 kDa
Amino acids	36 to 347

Specifications

Our [Abpromise guarantee](#) covers the use of **ab115506** in the following tested applications.

The application notes include recommended starting dilutions; optimal dilutions/concentrations should be determined by the end user.

Applications	Western blot ELISA Functional Studies
---------------------	---

Endotoxin level < 1.000 Eu/µg

Form Lyophilised

Additional notes All blood samples used for protein preparation were tested and found negative for HBsAg, anti-HCV, HIV Ag/Ab, and syphilis.
Identification of LRG from human serum by LC-MS/MS – The band of related protein was excised from the polyacrylamide gel and in-gel digested by trypsin (20ng/µL) for 2 hours in 40°C. Tryptic peptides were analysed by LC-MS/MS. The MASCOT score for LRG was 569 with 28% sequence coverage. MS/MS analysis of seven peptides yielded significant individual ions scores (for scores >50, p<0.05)

Preparation and Storage

Stability and Storage

Shipped at 4°C. Store at -20°C.

pH: 7.50

Constituents: 0.12% Sodium chloride, 0.24% Tris

Reconstitution

Add deionized water to prepare a working stock solution of approximately 0.5 mg/mL and let the lyophilized pellet dissolve completely. Aliquot reconstituted protein to avoid repeated freezing/thawing cycles and store at -80°C for long term storage. Reconstituted protein can be stored at 4°C for a limited period of time; it does not show any change after one week at 4°C.

General Info

Tissue specificity

Plasma.

Sequence similarities

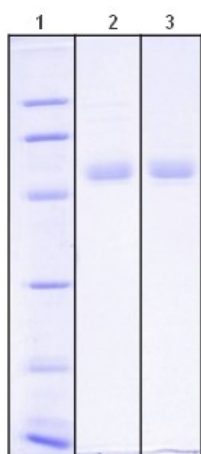
Contains 8 LRR (leucine-rich) repeats.

Contains 1 LRRCT domain.

Cellular localization

Secreted.

Images



SDS-PAGE analysis of Human LRG1: 12%

gel stained with Coomassie Brilliant Blue R250

Lane 1. M.W. marker – 14, 21, 31, 45, 66, 97

kDa

Lane 2. reduced and heated sample, 5µg/lane

Lane 3. non-reduced and non-heated sample,

5µg/lane

SDS-PAGE - LRG1 protein (ab115506)

Please note: All products are "FOR RESEARCH USE ONLY AND ARE NOT INTENDED FOR DIAGNOSTIC OR THERAPEUTIC USE"

Our Abpromise to you: Quality guaranteed and expert technical support

- Replacement or refund for products not performing as stated on the datasheet
- Valid for 12 months from date of delivery
- Response to your inquiry within 24 hours
- We provide support in Chinese, English, French, German, Japanese and Spanish
- Extensive multi-media technical resources to help you
- We investigate all quality concerns to ensure our products perform to the highest standards

If the product does not perform as described on this datasheet, we will offer a refund or replacement. For full details of the Abpromise, please visit <http://www.abcam.com/abpromise> or contact our technical team.

Terms and conditions

- Guarantee only valid for products bought direct from Abcam or one of our authorized distributors