

Product datasheet

Natural human IgE protein ab92394

1 Image

Overview

Product name	Natural human IgE protein
Protein length	Full length protein

Description

Nature	Native
Source	Native
Amino Acid Sequence	
Species	Human

Specifications

Our [Abpromise guarantee](#) covers the use of **ab92394** in the following tested applications.

The application notes include recommended starting dilutions; optimal dilutions/concentrations should be determined by the end user.

Biological activity	Activity: >18,500 IU/ml (ACS: 180 standardized against WHO 2nd IRP 75/502, 1IU = 2.4ng IgE)
Applications	Western blot
Form	Liquid
Additional notes	Human Myeloma IgE kappa from Human plasma

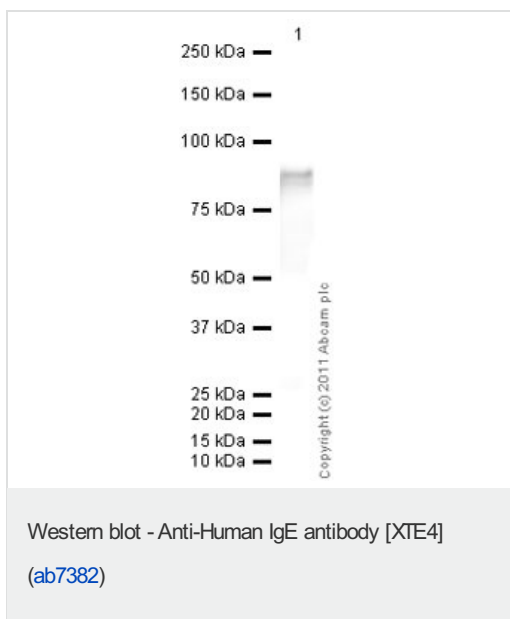
Preparation and Storage

Stability and Storage	Shipped at 4°C. Upon delivery aliquot. Store at -20°C or -80°C. Avoid freeze / thaw cycle. Preservative: None This product is an active protein and may elicit a biological response in vivo, handle with caution.
------------------------------	--

General Info

Relevance	IgE is the class of antibodies produced in the lungs, skin, and mucous membranes. It may protect against parasite invasion, but it is a major factor in allergic reactions. The antigen-specific IgE interacts with mast cells and eosinophils, triggers the release of histamine, leukotrienes and other substances that lead to the itching, sneezing and congestion of allergies - and the life threatening respiratory distress of asthma and anaphylactic shock.
------------------	---

Natural human IgE protein images



Anti-IgE antibody [XTE4] (ab7382) at 1 µg/ml
+ Natural human IgE protein (ab92394) at 0.01 µg

Secondary

Goat Anti-Mouse IgG H&L (HRP) preadsorbed (ab97040) at 1/5000 dilution
Developed using the ECL technique

Performed under reducing conditions.

Exposure time : 8 minutes

Please note: All products are "FOR RESEARCH USE ONLY AND ARE NOT INTENDED FOR DIAGNOSTIC OR THERAPEUTIC USE"

Our Abpromise to you: Quality guaranteed and expert technical support

- Replacement or refund for products not performing as stated on the datasheet
- Valid for 12 months from date of delivery
- Response to your inquiry within 24 hours
- We provide support in Chinese, English, French, German, Japanese and Spanish
- Extensive multi-media technical resources to help you
- We investigate all quality concerns to ensure our products perform to the highest standards

If the product does not perform as described on this datasheet, we will offer a refund or replacement. For full details of the Abpromise, please visit <http://www.abcam.com/abpromise> or contact our technical team.

Terms and conditions

- Guarantee only valid for products bought direct from Abcam or one of our authorized distributors