

## Product datasheet

# Anti-Nectin 3 antibody ab63931

★★★★★ 2 Abreviews 10 References 1 Image

### Overview

<b>Product name</b>	Anti-Nectin 3 antibody
<b>Description</b>	Rabbit polyclonal to Nectin 3
<b>Tested applications</b>	<b>Suitable for:</b> IHC-Fr, WB
<b>Species reactivity</b>	<b>Reacts with:</b> Mouse, Rat
<b>Immunogen</b>	Synthetic peptide corresponding to a region surrounding amino acid 536 of mouse nectin 3
<b>Positive control</b>	3T3 cell lysate; Rat kidney lysate

### Properties

<b>Form</b>	Liquid
<b>Storage instructions</b>	Shipped at 4°C. Upon delivery aliquot and store at -20°C. Avoid freeze / thaw cycles.
<b>Storage buffer</b>	Preservative: 0.01% Thimerosal (merthiolate) Constituents: 30% Glycerol, 0.5% BSA, PBS, pH 7.2
<b>Purity</b>	Protein A purified
<b>Clonality</b>	Polyclonal
<b>Isotype</b>	IgG

### Applications

Our [Abpromise guarantee](#) covers the use of **ab63931** in the following tested applications.

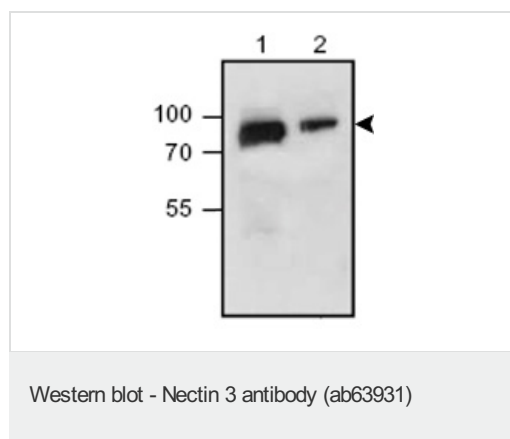
The application notes include recommended starting dilutions; optimal dilutions/concentrations should be determined by the end user.

Application	Abreviews	Notes
IHC-Fr	★★★★★	Use at an assay dependent concentration. See Abreview.
WB	★★★★★	Use a concentration of 0.5 - 4 µg/ml. Detects a band of approximately 83 kDa (predicted molecular weight: 83 kDa).

### Target

<b>Function</b>	Plays a role in cell-cell adhesion through heterophilic trans-interactions with nectin-like proteins or nectins, such as trans-interaction with PVRL2/nectin-2 at Sertoli-spermatid junctions. Trans-interaction with PVR induces activation of CDC42 and RAC small G proteins through common signaling molecules such as SRC and RAP1. Also involved in the formation of cell-cell junctions, including adherens junctions and synapses. Induces endocytosis-mediated down-regulation of PVR from the cell surface, resulting in reduction of cell movement and proliferation. Plays a role in the morphology of the ciliary body.
<b>Tissue specificity</b>	Predominantly expressed in testis and placenta as well as in many cell lines, including epithelial cell lines.
<b>Sequence similarities</b>	Belongs to the nectin family. Contains 2 Ig-like C2-type (immunoglobulin-like) domains. Contains 1 Ig-like V-type (immunoglobulin-like) domain.
<b>Cellular localization</b>	Cell membrane.

## Images



**All lanes** : Anti-Nectin 3 antibody (ab63931)

at 1  $\mu$ g

**Lane 1** : Rat kidney lysate

**Lane 2** : 3T3 cell lysate

Lysates/proteins at 30  $\mu$ g per lane.

**Predicted band size** : 83 kDa

**Observed band size** : 83 kDa

**Please note:** All products are "FOR RESEARCH USE ONLY AND ARE NOT INTENDED FOR DIAGNOSTIC OR THERAPEUTIC USE"

## Our Abpromise to you: Quality guaranteed and expert technical support

- Replacement or refund for products not performing as stated on the datasheet
- Valid for 12 months from date of delivery
- Response to your inquiry within 24 hours
- We provide support in Chinese, English, French, German, Japanese and Spanish
- Extensive multi-media technical resources to help you
- We investigate all quality concerns to ensure our products perform to the highest standards

If the product does not perform as described on this datasheet, we will offer a refund or replacement. For full details of the Abpromise, please visit <http://www.abcam.com/abpromise> or contact our technical team.

## Terms and conditions

- Guarantee only valid for products bought direct from Abcam or one of our authorized distributors