


Product datasheet

Anti-Nup107 antibody ab105026

2 Images

Overview

<b>Product name</b>	Anti-Nup107 antibody
<b>Description</b>	Goat polyclonal to Nup107
<b>Tested applications</b>	<b>Suitable for:</b> WB
<b>Species reactivity</b>	<b>Reacts with:</b> Mouse, Human <b>Predicted to work with:</b> Rat, Cow, Dog 
<b>Immunogen</b>	Synthetic peptide: PLPAEDDNAIREH by a Cysteine residue linker, corresponding to amino acids 735-747 of Human Nup107 (NP_065134.1)  <a href="#">Run BLAST with</a> <a href="#">Run BLAST with</a>
<b>Positive control</b>	Peripheral Blood Lymphocyte lysate

Properties

<b>Form</b>	Liquid
<b>Storage instructions</b>	Shipped at 4°C. Upon delivery aliquot and store at -20°C. Avoid freeze / thaw cycles.
<b>Storage buffer</b>	Preservative: 0.02% Sodium Azide Constituents: 0.5% BSA, Tris buffered saline, pH 7.3
<b>Purity</b>	Immunogen affinity purified
<b>Purification notes</b>	Purified from goat serum by ammonium sulphate precipitation followed by antigen affinity chromatography using the immunizing peptide.
<b>Clonality</b>	Polyclonal
<b>Isotype</b>	IgG

Applications

Our [Abpromise guarantee](#) covers the use of **ab105026** in the following tested applications.

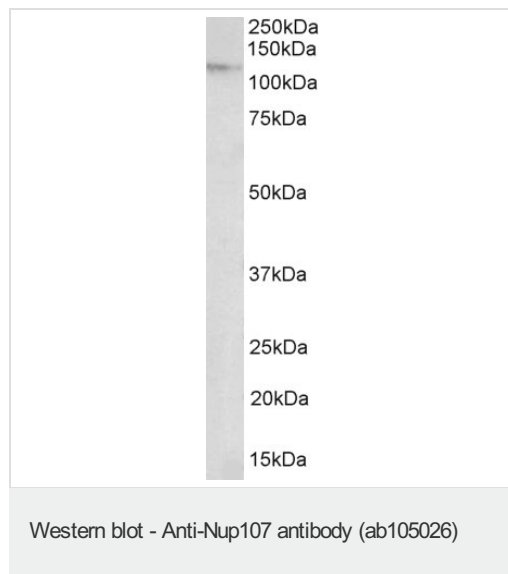
The application notes include recommended starting dilutions; optimal dilutions/concentrations should be determined by the end user.

Application	Abreviews	Notes
WB		Use a concentration of 1 - 3 µg/ml. Predicted molecular weight: 106 kDa.

## Target

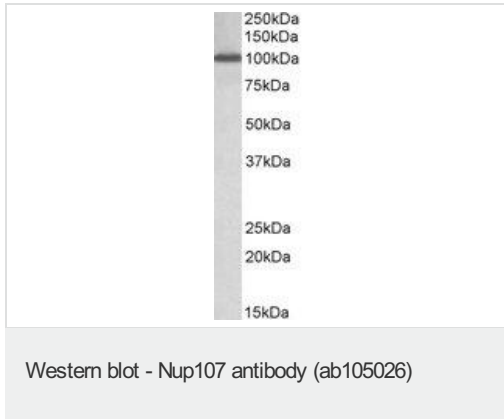
<b>Function</b>	Plays a role in the nuclear pore complex (NPC) assembly and/or maintenance. Required for the assembly of peripheral proteins into the NPC. May anchor NUP62 to the NPC.
<b>Tissue specificity</b>	Ubiquitously expressed in fetal and adult tissues.
<b>Involvement in disease</b>	Nephrotic syndrome 11
<b>Sequence similarities</b>	Belongs to the nucleoporin Nup84/Nup107 family.
<b>Cellular localization</b>	Nucleus membrane. Nucleus, nuclear pore complex. Chromosome, centromere, kinetochore. Located on both the cytoplasmic and nuclear sides of the NPC core structure (PubMed:11564755). During mitosis, localizes to the kinetochores (PubMed:11564755). Dissociates from the disassembled NPC structure late during prophase of mitosis (PubMed:11564755).

## Images



Anti-Nup107 antibody (ab105026) at 2 µg +  
 NIH3T3 nuclear cell lysate at 35 µg  
 Developed using the ECL technique

**Predicted band size : 106 kDa**



Anti-Nup107 antibody (ab105026) at 1 µg/ml  
+ Peripheral Blood Lymphocytes lysate at 35  
µg  
Developed using the ECL technique

**Predicted band size : 106 kDa**

**Exposure time : 1 hour**

**Please note:** All products are "FOR RESEARCH USE ONLY AND ARE NOT INTENDED FOR DIAGNOSTIC OR THERAPEUTIC USE"

### Our Abpromise to you: Quality guaranteed and expert technical support

- Replacement or refund for products not performing as stated on the datasheet
- Valid for 12 months from date of delivery
- Response to your inquiry within 24 hours
- We provide support in Chinese, English, French, German, Japanese and Spanish
- Extensive multi-media technical resources to help you
- We investigate all quality concerns to ensure our products perform to the highest standards

If the product does not perform as described on this datasheet, we will offer a refund or replacement. For full details of the Abpromise, please visit <http://www.abcam.com/abpromise> or contact our technical team.

### Terms and conditions

- Guarantee only valid for products bought direct from Abcam or one of our authorized distributors