

Product datasheet

Anti-ORMDL3 antibody ab107639

[2 References](#) [1 Image](#)

Overview

Product name	Anti-ORMDL3 antibody
Description	Rabbit polyclonal to ORMDL3
Host species	Rabbit
Specificity	ab107639 may cross-react with ORMDL1 and ORMDL2.
Tested applications	Suitable for: WB
Species reactivity	Reacts with: Mouse, Human
Immunogen	Synthetic peptide corresponding to Human ORMDL3 aa 53-81 (internal sequence) conjugated to Keyhole Limpet Haemocyanin (KLH). Database link: Q8N138
Positive control	WB: Mouse testis tissue lysate.

Properties

Form	Liquid
Storage instructions	Shipped at 4°C. Store at 4°C (up to 6 months). Upon delivery aliquot. Store at -20°C long term. Avoid freeze / thaw cycle.
Storage buffer	Preservative: 0.09% Sodium azide Constituent: PBS
Purity	Immunogen affinity purified
Purification notes	ab107639 is purified through a protein A column, followed by peptide affinity purification.
Clonality	Polyclonal
Isotype	IgG

Applications

Our [Abpromise guarantee](#) covers the use of **ab107639** in the following tested applications.

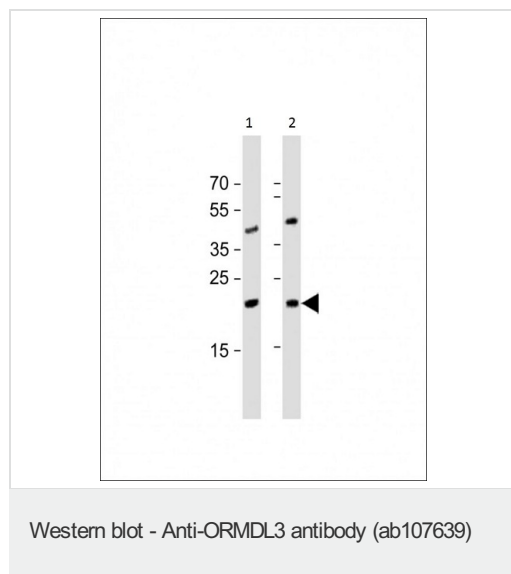
The application notes include recommended starting dilutions; optimal dilutions/concentrations should be determined by the end user.

Application	Abreviews	Notes
WB		1/1000. Predicted molecular weight: 17 kDa.

Target

Function	Negative regulator of sphingolipid synthesis. May indirectly regulate endoplasmic reticulum-mediated Ca(+2) signaling.
Tissue specificity	Widely expressed. Expressed in adult and fetal heart, brain, lung, liver, skeletal muscle and kidney. Expressed in adult pancreas and placenta and in fetal spleen abd thymus.
Involvement in disease	Genetic variations in ORMDL3 are associated with susceptibility to asthma (ASTHMA) [MIM:600807]. The most common chronic disease affecting children and young adults. It is a complex genetic disorder with a heterogeneous phenotype, largely attributed to the interactions among many genes and between these genes and the environment. It is characterized by recurrent attacks of paroxysmal dyspnea, with weezing due to spasmodic contraction of the bronchi.
Sequence similarities	Belongs to the ORM family.
Cellular localization	Endoplasmic reticulum membrane.

Images



All lanes : Anti-ORMDL3 antibody (ab107639) at 1/1000 dilution

Lane 1 : Jurkat whole cell lysate

Lane 2 : Mouse testis lysate

Lysates/proteins at 20 µg per lane.

Secondary

All lanes : Goat Anti-Rabbit IgG, (H+L), Peroxidase conjugated at 1/10000 dilution

Predicted band size: 17 kDa

Blocking buffer 5% NFDm/TBST

Diluting buffer 5% NFDm/TBST

Please note: All products are "FOR RESEARCH USE ONLY AND ARE NOT INTENDED FOR DIAGNOSTIC OR THERAPEUTIC USE"

Our Abpromise to you: Quality guaranteed and expert technical support

- Replacement or refund for products not performing as stated on the datasheet
- Valid for 12 months from date of delivery
- Response to your inquiry within 24 hours

- We provide support in Chinese, English, French, German, Japanese and Spanish
- Extensive multi-media technical resources to help you
- We investigate all quality concerns to ensure our products perform to the highest standards

If the product does not perform as described on this datasheet, we will offer a refund or replacement. For full details of the Abpromise, please visit <http://www.abcam.com/abpromise> or contact our technical team.

Terms and conditions

- Guarantee only valid for products bought direct from Abcam or one of our authorized distributors