

Product datasheet

Anti-OSTC antibody ab115600

[2 Images](#)

Overview

Product name	Anti-OSTC antibody
Description	Rabbit polyclonal to OSTC
Tested applications	Suitable for: IHC-P
Species reactivity	Reacts with: Human
Immunogen	Synthetic peptide conjugated to KLH, corresponding to internal sequence amino acids of Human OSTC protein (NP_067050.1).
Positive control	Human prostate and liver tissues.

Properties

Form	Liquid
Storage instructions	Shipped at 4°C. Store at -80°C.
Storage buffer	Preservative: 0.1% Sodium azide Constituent: 99% PBS
Purity	Protein A purified
Clonality	Polyclonal
Isotype	IgG

Applications

Our [Abpromise guarantee](#) covers the use of **ab115600** in the following tested applications.

The application notes include recommended starting dilutions; optimal dilutions/concentrations should be determined by the end user.

Application	Abreviews	Notes
IHC-P		Use a concentration of 10 µg/ml. Perform heat mediated antigen retrieval with citrate buffer pH 6 before commencing with IHC staining protocol.

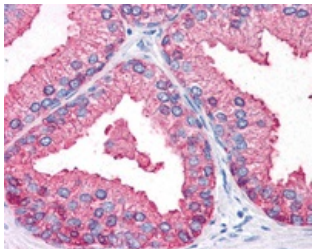
Target

Sequence similarities

Belongs to the OSTC family.

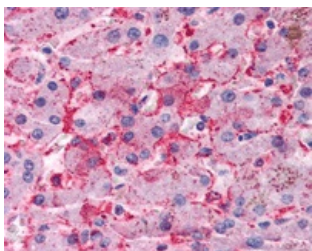
Cellular localization

Membrane.

Images

Immunohistochemistry (Formalin/PFA-fixed paraffin-embedded sections) - Anti-OSTC antibody (ab115600)

ab115600, at 10 μ g/ml, staining OSTC in Formalin-fixed, Paraffin-embedded Human Prostate tissue by Immunohistochemistry followed by biotinylated secondary antibody, alkaline phosphatase-streptavidin and chromogen.



Immunohistochemistry (Formalin/PFA-fixed paraffin-embedded sections) - Anti-OSTC antibody (ab115600)

ab115600, at 10 μ g/ml, staining OSTC in Formalin-fixed, Paraffin-embedded Human Liver tissue by Immunohistochemistry followed by biotinylated secondary antibody, alkaline phosphatase-streptavidin and chromogen.

Please note: All products are "FOR RESEARCH USE ONLY AND ARE NOT INTENDED FOR DIAGNOSTIC OR THERAPEUTIC USE"

Our Abpromise to you: Quality guaranteed and expert technical support

- Replacement or refund for products not performing as stated on the datasheet
- Valid for 12 months from date of delivery
- Response to your inquiry within 24 hours
- We provide support in Chinese, English, French, German, Japanese and Spanish
- Extensive multi-media technical resources to help you
- We investigate all quality concerns to ensure our products perform to the highest standards

If the product does not perform as described on this datasheet, we will offer a refund or replacement. For full details of the Abpromise, please visit <http://www.abcam.com/abpromise> or contact our technical team.

Terms and conditions

- Guarantee only valid for products bought direct from Abcam or one of our authorized distributors