

## Product datasheet

# Anti-PDGF Receptor alpha antibody ab124392

★★★★☆ 3 Abreviews 1 Image

### Overview

---

<b>Product name</b>	Anti-PDGF Receptor alpha antibody
<b>Description</b>	Rabbit polyclonal to PDGF Receptor alpha
<b>Host species</b>	Rabbit
<b>Tested applications</b>	<b>Suitable for:</b> WB, IP, IHC-P
<b>Species reactivity</b>	<b>Reacts with:</b> Mouse, Human <b>Predicted to work with:</b> Rat, Rabbit, Horse, Chicken, Cow, Dog, Pig, Xenopus laevis
<b>Immunogen</b>	Synthetic peptide corresponding to Human PDGF Receptor alpha aa 1035-1053 conjugated to keyhole limpet haemocyanin. Sequence: cGKRRNRHSSQTSEESAIETG  Database link: <a href="#">P16234</a>  <a href="#">Run BLAST with</a> <a href="#">Run BLAST with</a>
<b>Positive control</b>	IHC-P: Human brain cerebellum tissue.

### Properties

---

<b>Form</b>	Liquid
<b>Storage instructions</b>	Shipped at 4°C. Upon delivery aliquot. Store at +4°C. Do Not Freeze.
<b>Storage buffer</b>	pH: 7.40 Preservative: 0.05% Sodium azide Constituents: 99% Tris glycine, 0.88% Sodium chloride
<b>Purity</b>	Immunogen affinity purified
<b>Clonality</b>	Polyclonal
<b>Isotype</b>	IgG

### Applications

---

Our [Abpromise guarantee](#) covers the use of **ab124392** in the following tested applications.

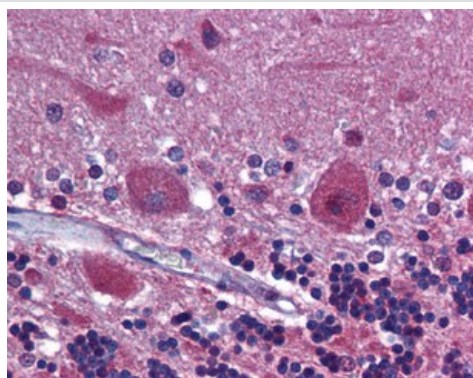
The application notes include recommended starting dilutions; optimal dilutions/concentrations should be determined by the end user.

Application	Abreviews	Notes
WB		1/250 - 1/500. Detects a band of approximately 150,170 kDa (predicted molecular weight: 122 kDa).
IP		Use at an assay dependent concentration. 5-10 µl immunoprecipitates PDGF Receptor alpha from 500 µg of NIH/3T3 RIPA lysate.
IHC-P	★★★★★	1/100.

## Target

<b>Function</b>	Receptor that binds both PDGFA and PDGFB and has a tyrosine-protein kinase activity.
<b>Tissue specificity</b>	Expressed in primary and metastatic colon tumors and in normal colon tissue. Tumors may express a different isoform to that found in normal tissue.
<b>Involvement in disease</b>	Note=A chromosomal aberration involving PDGFRA is found in some cases of hypereosinophilic syndrome. Interstitial chromosomal deletion del(4)(q12q12) causes the fusion of FIP1L1 and PDGFRA (FIP1L1-PDGFR).
<b>Sequence similarities</b>	Belongs to the protein kinase superfamily. Tyr protein kinase family. CSF-1/PDGF receptor subfamily. Contains 5 Ig-like C2-type (immunoglobulin-like) domains. Contains 1 protein kinase domain.
<b>Cellular localization</b>	Membrane.

## Images



ab124392, at 1/100 dilution, staining PDGF Receptor alpha in formalin-fixed, paraffin-embedded human brain cerebellum tissue by Immunohistochemistry.

Immunohistochemistry (Formalin/PFA-fixed paraffin-embedded sections) - Anti-PDGF Receptor alpha antibody (ab124392)

**Please note:** All products are "FOR RESEARCH USE ONLY AND ARE NOT INTENDED FOR DIAGNOSTIC OR THERAPEUTIC USE"

## Our Abpromise to you: Quality guaranteed and expert technical support

- Replacement or refund for products not performing as stated on the datasheet

- Valid for 12 months from date of delivery
- Response to your inquiry within 24 hours
  
- We provide support in Chinese, English, French, German, Japanese and Spanish
- Extensive multi-media technical resources to help you
- We investigate all quality concerns to ensure our products perform to the highest standards

If the product does not perform as described on this datasheet, we will offer a refund or replacement. For full details of the Abpromise, please visit <http://www.abcam.com/abpromise> or contact our technical team.

### **Terms and conditions**

---

- Guarantee only valid for products bought direct from Abcam or one of our authorized distributors