

Product datasheet

Anti-PDGF Receptor alpha antibody ab96806

★★★★☆ 4 Abreviews 3 Images

Overview

Product name	Anti-PDGF Receptor alpha antibody
Description	Rabbit polyclonal to PDGF Receptor alpha
Host species	Rabbit
Tested applications	Suitable for: WB, IHC-FoFr
Species reactivity	Reacts with: Mouse, Rat, Human Predicted to work with: Dog
Immunogen	Synthetic peptide conjugated to KLH derived from within residues 750 - 850 of Human PDGF Receptor alpha. Read Abcam's proprietary immunogen policy
Positive control	This antibody gave a positive signal in the following whole cell lysates: Caco 2; SW480; MCF7; Jurkat; HepG2; NIH 3T3; PC12.

Properties

Form	Liquid
Storage instructions	Shipped at 4°C. Store at +4°C short term (1-2 weeks). Upon delivery aliquot. Store at -20°C or -80°C. Avoid freeze / thaw cycle.
Storage buffer	Preservative: 0.02% Sodium Azide Constituents: 1% BSA, PBS, pH 7.4
Purity	Immunogen affinity purified
Clonality	Polyclonal
Isotype	IgG

Applications

Our [Abpromise guarantee](#) covers the use of **ab96806** in the following tested applications.

The application notes include recommended starting dilutions; optimal dilutions/concentrations should be determined by the end user.

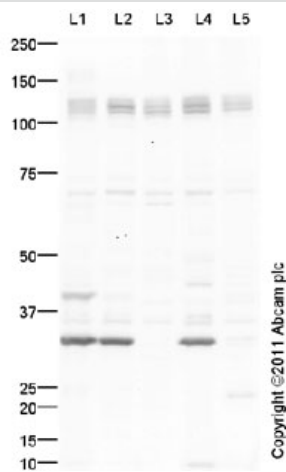
Application	Abreviews	Notes
WB	★★★★☆	Use a concentration of 1 mg/ml. Detects a band of approximately 123 kDa (predicted molecular weight: 123 kDa).

Application	Abreviews	Notes
IHC-FoFr	★★★★☆	Use at an assay dependent concentration.

Target

Function	Receptor that binds both PDGFA and PDGFB and has a tyrosine-protein kinase activity.
Tissue specificity	Expressed in primary and metastatic colon tumors and in normal colon tissue. Tumors may express a different isoform to that found in normal tissue.
Involvement in disease	Note=A chromosomal aberration involving PDGFRA is found in some cases of hypereosinophilic syndrome. Interstitial chromosomal deletion del(4)(q12q12) causes the fusion of FIP1L1 and PDGFRA (FIP1L1-PDGFR).
Sequence similarities	Belongs to the protein kinase superfamily. Tyr protein kinase family. CSF-1/PDGF receptor subfamily. Contains 5 Ig-like C2-type (immunoglobulin-like) domains. Contains 1 protein kinase domain.
Cellular localization	Membrane.

Images



Western blot - Anti-PDGF Receptor alpha antibody (ab96806)

All lanes : Anti-PDGF Receptor alpha antibody (ab96806) at 1 µg/ml

Lane 1 : Caco 2 (Human colonic carcinoma cell line) Whole Cell Lysate

Lane 2 : SW480 (Human colon adenocarcinoma cell line) Whole Cell Lysate

Lane 3 : MCF7 (Human breast adenocarcinoma cell line) Whole Cell Lysate

Lane 4 : Jurkat (Human T cell lymphoblast-like cell line) Whole Cell Lysate

Lane 5 : HepG2 (Human hepatocellular liver carcinoma cell line) Whole Cell Lysate

Lysates/proteins at 10 µg per lane.

Secondary

All lanes : Goat polyclonal Secondary Antibody to Rabbit IgG - H&L (HRP), pre-adsorbed at 1/5000 dilution

Developed using the ECL technique.

Performed under reducing conditions.

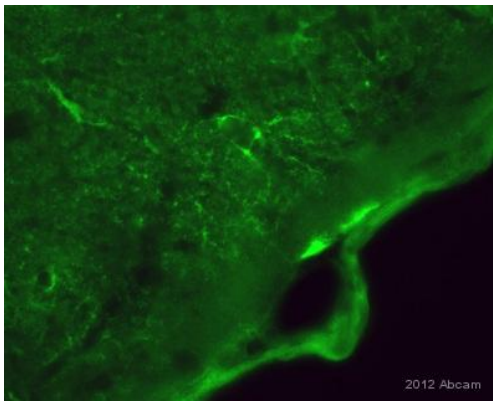
Predicted band size: 123 kDa

Observed band size: 123 kDa

Additional bands at: 32 kDa, 40 kDa, 70 kDa. We are unsure as to the identity of these extra bands.

Exposure time: 8 minutes

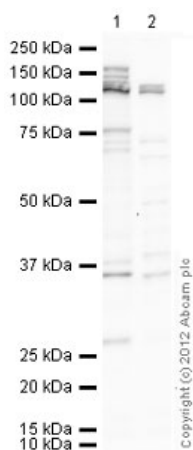
The PDGF Receptor Alpha protein contains a number of potential glycosylation sites (SwissProt). This might explain the migration pattern observed.



Immunohistochemistry (PFA perfusion fixed frozen sections) - Anti-PDGF Receptor alpha antibody (ab96806)

This image is courtesy of an abreview submitted by Sophie Pezet, CNRS, Paris, France

Immunohistochemistry (PFA perfusion fixed frozen sections) analysis of rat brain tissue sections labeling PDGF Receptor alpha with ab96806 at 1/100 dilution. The sections used came from animals perfused fixed with Paraformaldehyde 4% with 15% of a solution of saturated picric acid, in phosphate buffer 0.1M. Following postfixation in the same fixative overnight, the spinal cord were cryoprotected in sucrose 30% overnight. Spinal cords were then cut using a cryostat and the immunostainings were performed using the 'free floating' technique. Tissue was incubated with Anti-PDGF Receptor alpha antibody (ab96806) for 18 hours at 20°C in PBST. A Goat anti-rabbit Alexa Fluor 488 secondary antibody was used at 1/1000 dilution.



Western blot - Anti-PDGF Receptor alpha antibody (ab96806)

All lanes : Anti-PDGF Receptor alpha antibody (ab96806) at 1 µg/ml

Lane 1 : NIH 3T3 (Mouse embryonic fibroblast cell line) Whole Cell Lysate

Lane 2 : PC12 (Rat adrenal pheochromocytoma cell line) Whole Cell Lysate

Lysates/proteins at 10 µg per lane.

Secondary

All lanes : Goat Anti-Rabbit IgG H&L (HRP) preadsorbed (ab97080) at 1/5000 dilution

Developed using the ECL technique.

Performed under reducing conditions.

Predicted band size: 123 kDa

Observed band size: 123 kDa

Additional bands at: 35 kDa, 75 kDa. We are unsure as to the identity of these extra bands.

Exposure time: 8 minutes

Please note: All products are "FOR RESEARCH USE ONLY AND ARE NOT INTENDED FOR DIAGNOSTIC OR THERAPEUTIC USE"

Our Abpromise to you: Quality guaranteed and expert technical support

- Replacement or refund for products not performing as stated on the datasheet
- Valid for 12 months from date of delivery
- Response to your inquiry within 24 hours
- We provide support in Chinese, English, French, German, Japanese and Spanish
- Extensive multi-media technical resources to help you
- We investigate all quality concerns to ensure our products perform to the highest standards

If the product does not perform as described on this datasheet, we will offer a refund or replacement. For full details of the Abpromise, please visit <http://www.abcam.com/abpromise> or contact our technical team.

Terms and conditions

- Guarantee only valid for products bought direct from Abcam or one of our authorized distributors