

## Product datasheet

# Anti-PHACTR2 antibody - N-terminal ab85262

1 Image

### Overview

<b>Product name</b>	Anti-PHACTR2 antibody - N-terminal
<b>Description</b>	Rabbit polyclonal to PHACTR2 - N-terminal
<b>Tested applications</b>	<b>Suitable for:</b> WB, ELISA
<b>Species reactivity</b>	<b>Reacts with:</b> Human
<b>Immunogen</b>	Synthetic peptide selected from the N terminal region of human PHACTR2 conjugated to KLH (NP_055536)
<b>Positive control</b>	HepG2 cell line lysates.

### Properties

<b>Form</b>	Liquid
<b>Storage instructions</b>	Shipped at 4°C. Upon delivery aliquot and store at -20°C or -80°C. Avoid repeated freeze / thaw cycles.
<b>Storage buffer</b>	Preservative: 0.09% Sodium Azide Constituents: PBS
<b>Purity</b>	Ammonium Sulphate Precipitation
<b>Purification notes</b>	ab85262 is prepared by Saturated Ammonium Sulphate (SAS) precipitation followed by dialysis against PBS.
<b>Clonality</b>	Polyclonal
<b>Isotype</b>	IgG

### Applications

Our [Abpromise guarantee](#) covers the use of **ab85262** in the following tested applications.

The application notes include recommended starting dilutions; optimal dilutions/concentrations should be determined by the end user.

Application	Abreviews	Notes
WB		1/50 - 1/100. Detects a band of approximately 70 kDa (predicted molecular weight: 70 kDa).
ELISA		1/1000.

## Target

---

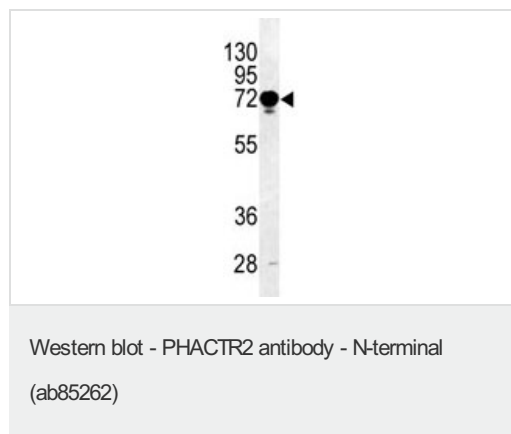
### Sequence similarities

Belongs to the phosphatase and actin regulator family.  
Contains 4 RPEL repeats.

---

## Images

---



Anti-PHACTR2 antibody - N-terminal (ab85262) at 1/50 dilution + HepG2 cell line lysates at 35 µg

**Predicted band size :** 70 kDa

**Observed band size :** 70 kDa

**Additional bands at :** 28 kDa. We are unsure as to the identity of these extra bands.

**Please note:** All products are "FOR RESEARCH USE ONLY AND ARE NOT INTENDED FOR DIAGNOSTIC OR THERAPEUTIC USE"

## Our Abpromise to you: Quality guaranteed and expert technical support

---

- Replacement or refund for products not performing as stated on the datasheet
- Valid for 12 months from date of delivery
- Response to your inquiry within 24 hours
- We provide support in Chinese, English, French, German, Japanese and Spanish
- Extensive multi-media technical resources to help you
- We investigate all quality concerns to ensure our products perform to the highest standards

If the product does not perform as described on this datasheet, we will offer a refund or replacement. For full details of the Abpromise, please visit <http://www.abcam.com/abpromise> or contact our technical team.

## Terms and conditions

---

- Guarantee only valid for products bought direct from Abcam or one of our authorized distributors