


Product datasheet

Anti-PITX2 antibody ab98297

1 Abreviews 1 References 2 Images

Overview

Product name	Anti-PITX2 antibody
Description	Rabbit polyclonal to PITX2
Host species	Rabbit
Tested applications	Suitable for: ICC/IF, WB
Species reactivity	Reacts with: Human Predicted to work with: Mouse, Dog 
Immunogen	Synthetic peptide conjugated to KLH derived from within residues 1 - 100 of Human PITX2. Read Abcam's proprietary immunogen policy
Positive control	This antibody gave a positive signal in Human Heart Tissue Lysate.

Properties

Form	Liquid
Storage instructions	Shipped at 4°C. Store at +4°C short term (1-2 weeks). Upon delivery aliquot. Store at -20°C or -80°C. Avoid freeze / thaw cycle.
Storage buffer	Preservative: 0.02% Sodium Azide Constituents: 1% BSA, PBS, pH 7.4
Purity	Immunogen affinity purified
Clonality	Polyclonal
Isotype	IgG

Applications

Our [Abpromise guarantee](#) covers the use of **ab98297** in the following tested applications.

The application notes include recommended starting dilutions; optimal dilutions/concentrations should be determined by the end user.

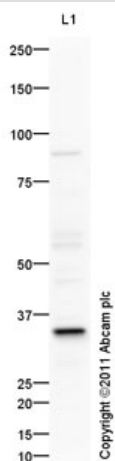
Application	Abreviews	Notes
ICC/IF		Use a concentration of 1 µg/ml.

Application	Abreviews	Notes
WB		Use a concentration of 1 µg/ml. Detects a band of approximately 35 kDa (predicted molecular weight: 35 kDa).

Target

Function	May play an important role in development and maintenance of anterior structures. Isoform PTX2C is involved in left-right asymmetry the developing embryo.
Involvement in disease	<p>Defects in PITX2 are the cause of Axenfeld-Rieger syndrome type 1 (RIEG1) [MIM:180500]; also known as Rieger syndrome type 1. RIEG1 is an autosomal dominant defect characterized by hypodontia (partial anodontia), anal stenosis, hypertelorism, mental deficiency, agenesis of the facial bones, with malformation of the anterior chamber of the eye.</p> <p>Defects in PITX2 are the cause of iridogoniodysgenesis type 2 (IRID2) [MIM:137600]; also known as iridogoniodysgenesis syndrome 2 (IGDS2). It is an autosomal dominant inherited disease.</p> <p>Defects in PITX2 are a cause of Peters anomaly (PAN) [MIM:604229]. It is a congenital defect of the anterior chamber of the eye.</p> <p>Defects in PITX2 are associated with ring dermoid of cornea (RDC) [MIM:180550]. RDC is an autosomal dominantly inherited syndrome characterized by bilateral annular limbal dermoids with corneal and conjunctival extension.</p>
Sequence similarities	<p>Belongs to the paired homeobox family. Bicoid subfamily.</p> <p>Contains 1 homeobox DNA-binding domain.</p>
Cellular localization	Nucleus.

Images



Western blot - Anti-PITX2 antibody (ab98297)

Anti-PITX2 antibody (ab98297) at 1 µg/ml +
Human heart tissue lysate - total protein
(ab29431) at 10 µg

Secondary

Goat Anti-Rabbit IgG H&L (HRP) preadsorbed
(ab97080) at 1/5000 dilution

Developed using the ECL technique.

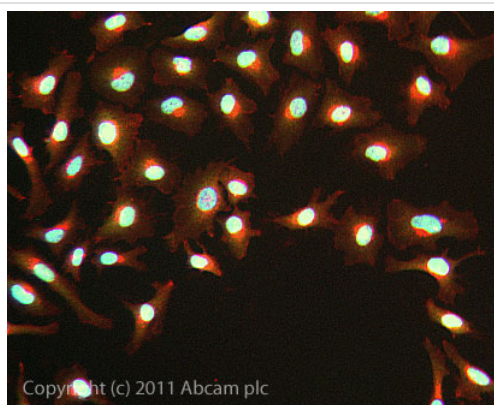
Performed under reducing conditions.

Predicted band size: 35 kDa

Observed band size: 35 kDa

Additional bands at: 55 kDa, 60 kDa, 85 kDa. We are unsure as to the identity of these extra bands.

Exposure time: 4 minutes



Immunocytochemistry/ Immunofluorescence - Anti-PITX2 antibody (ab98297)

ICC/IF image of ab98297 stained HeLa cells. The cells were 100% methanol fixed (5 min) and then incubated in 1%BSA / 10% normal goat serum / 0.3M glycine in 0.1% PBS-Tween for 1h to permeabilise the cells and block non-specific protein-protein interactions. The cells were then incubated with the antibody ab98297 at 1µg/ml overnight at +4°C. The secondary antibody (green) was DyLight® 488 goat anti- rabbit (ab96899) IgG (H+L) used at a 1/250 dilution for 1h. Alexa Fluor® 594 WGA was used to label plasma membranes (red) at a 1/200 dilution for 1h. DAPI was used to stain the cell nuclei (blue) at a concentration of 1.43µM. This antibody also gave a positive result in methanol fixed (100%, 5min) HepG2, HEK293, and MCF-7 cell lines at 1ug/ml

Please note: All products are "FOR RESEARCH USE ONLY AND ARE NOT INTENDED FOR DIAGNOSTIC OR THERAPEUTIC USE"

Our Abpromise to you: Quality guaranteed and expert technical support

- Replacement or refund for products not performing as stated on the datasheet
- Valid for 12 months from date of delivery
- Response to your inquiry within 24 hours

- We provide support in Chinese, English, French, German, Japanese and Spanish
- Extensive multi-media technical resources to help you
- We investigate all quality concerns to ensure our products perform to the highest standards

If the product does not perform as described on this datasheet, we will offer a refund or replacement. For full details of the Abpromise, please visit <http://www.abcam.com/abpromise> or contact our technical team.

Terms and conditions

- Guarantee only valid for products bought direct from Abcam or one of our authorized distributors