

Product datasheet

Anti-PKA regulatory subunit I beta antibody ab38225

1 References 2 Images

Overview

---

<b>Product name</b>	Anti-PKA regulatory subunit I beta antibody
<b>Description</b>	Rabbit polyclonal to PKA regulatory subunit I beta
<b>Host species</b>	Rabbit
<b>Specificity</b>	This antibody is specific for PKA regulatory subunit I beta.
<b>Tested applications</b>	<b>Suitable for:</b> ELISA, IHC-P, WB
<b>Species reactivity</b>	<b>Reacts with:</b> Mouse, Human
<b>Immunogen</b>	A KLH conjugated synthetic peptide selected from the sequence of human PKA regulatory subunit I beta within aa 1-100.
<b>Positive control</b>	Human breast carcinoma tissue and mouse liver tissue lysate.

Properties

---

<b>Form</b>	Liquid
<b>Storage instructions</b>	Shipped at 4°C. Store at +4°C short term (1-2 weeks). Upon delivery aliquot. Store at -20°C long term.
<b>Storage buffer</b>	Preservative: 0.09% Sodium Azide Constituents: PBS
<b>Purity</b>	Protein G purified
<b>Purification notes</b>	This antibody is purified through a protein G column and eluted out with both high and low pH buffers and neutralized immediately after elution then followed by dialysis against PBS.
<b>Clonality</b>	Polyclonal
<b>Isotype</b>	IgG

Applications

---

Our [Abpromise guarantee](#) covers the use of **ab38225** in the following tested applications.

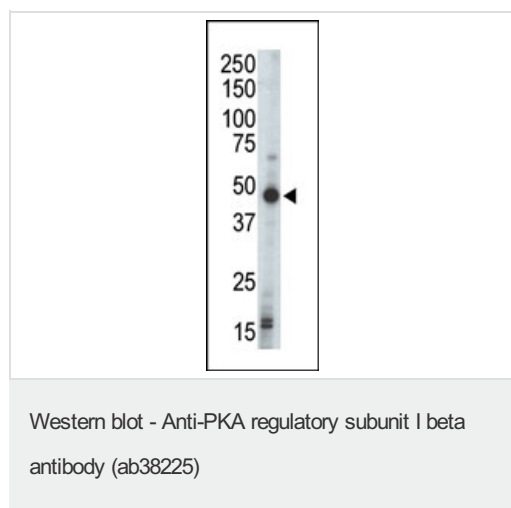
The application notes include recommended starting dilutions; optimal dilutions/concentrations should be determined by the end user.

Application	Abreviews	Notes
ELISA		1/1000.
IHC-P		1/50 - 1/100.
WB		1/100 - 1/500. Detects a band of approximately 43 kDa (predicted molecular weight: 43 kDa).

## Target

<b>Tissue specificity</b>	Four types of regulatory chains are found: I-alpha, I-beta, II-alpha, and II-beta. Their expression varies among tissues and is in some cases constitutive and in others inducible.
<b>Sequence similarities</b>	Belongs to the cAMP-dependent kinase regulatory chain family. Contains 2 cyclic nucleotide-binding domains.
<b>Post-translational modifications</b>	The pseudophosphorylation site binds to the substrate-binding region of the catalytic chain, resulting in the inhibition of its activity.

## Images



Anti-PKA regulatory subunit I beta antibody (ab38225) at 1/100 dilution + mouse liver tissue lysate

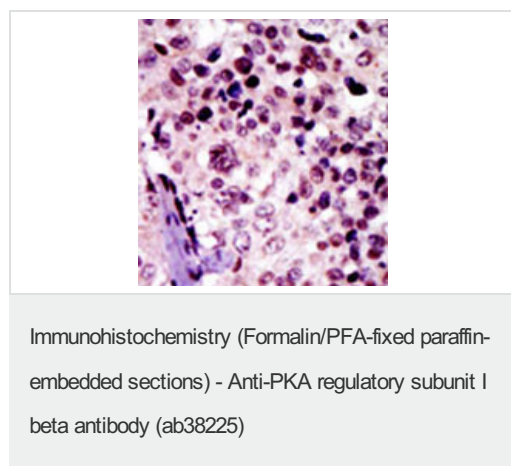
### Secondary

HRP-anti-rabbit

Developed using the ECL technique.

**Predicted band size:** 43 kDa

**Observed band size:** 43 kDa



Formalin-fixed and paraffin-embedded human breast cancer tissue reacted with ab38225 at a 1/50 dilution, which was peroxidase-conjugated to the secondary antibody, followed by AEC staining.

This data demonstrates the use of this antibody for immunohistochemistry; clinical relevance has not been evaluated.

### **Our Abpromise to you: Quality guaranteed and expert technical support**

---

- Replacement or refund for products not performing as stated on the datasheet
- Valid for 12 months from date of delivery
- Response to your inquiry within 24 hours
  
- We provide support in Chinese, English, French, German, Japanese and Spanish
- Extensive multi-media technical resources to help you
- We investigate all quality concerns to ensure our products perform to the highest standards

If the product does not perform as described on this datasheet, we will offer a refund or replacement. For full details of the Abpromise, please visit <http://www.abcam.com/abpromise> or contact our technical team.

### **Terms and conditions**

---

- Guarantee only valid for products bought direct from Abcam or one of our authorized distributors