

Product datasheet

Anti-PKC zeta (phospho T410) + PKC lambda (phospho T412) antibody [EP1491Y] ab76129

Recombinant RabMAb

[2 References](#) [7 Images](#)

Overview

Product name	Anti-PKC zeta (phospho T410) + PKC lambda (phospho T412) antibody [EP1491Y]
Description	Rabbit monoclonal [EP1491Y] to PKC zeta (phospho T410) + PKC lambda (phospho T412)
Host species	Rabbit
Specificity	ab76129 detects PKC zeta and PKC lambda phosphorylated at T410/412 respectively.
Tested applications	Suitable for: IHC-P, WB Unsuitable for: IP
Species reactivity	Reacts with: Mouse, Rat, Human
Immunogen	Synthetic peptide (the amino acid sequence is considered to be commercially sensitive) corresponding to PKC zeta.
Positive control	293 cell lysate, human brain tissue; HeLa cells.
General notes	This product is a recombinant rabbit monoclonal antibody.

We are constantly working hard to ensure we provide our customers with best in class antibodies. As a result of this work we are pleased to now offer this antibody in purified format. We are in the process of updating our datasheets. The purified format is designated 'PUR' on our product labels. If you have any questions regarding this update, please contact our Scientific Support team.

Our RabMAb[®] technology is a patented hybridoma-based technology for making rabbit monoclonal antibodies. For details on our patents, please refer to [RabMAb[®] patents](#)

Properties

Form	Liquid
Storage instructions	Shipped at 4°C. Store at +4°C short term (1-2 weeks). Upon delivery aliquot. Store at -20°C. Avoid freeze / thaw cycle.
Storage buffer	pH: 7.20 Preservative: 0.01% Sodium azide

Constituents: 59% PBS, 40% Glycerol, 0.05% BSA

Purity	Protein A purified
Clonality	Monoclonal
Clone number	EP1491Y
Isotype	IgG

Applications

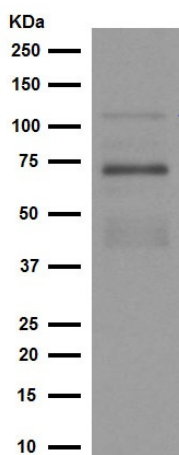
Our [Abpromise guarantee](#) covers the use of **ab76129** in the following tested applications.

The application notes include recommended starting dilutions; optimal dilutions/concentrations should be determined by the end user.

Application	Abreviews	Notes
IHC-P		1/50 - 1/100. Perform heat mediated antigen retrieval before commencing with IHC staining protocol. See protocols (link: http://www.abcam.com/protocols/ihc-antigen-retrieval-protocol).
WB		1/20000. Predicted molecular weight: 68 kDa. For unpurified, use 1/1000 - 1/2000.

Application notes Is unsuitable for IP.

Images



Western blot - Anti-PKC zeta (phospho T410) + PKC lambda (phospho T412) antibody [EP1491Y] (ab76129)

Anti-PKC zeta (phospho T410) + PKC lambda (phospho T412) antibody [EP1491Y] (ab76129) at 1/20000 dilution (purified) + Mouse lung tissue lysate at 10 µg

Secondary

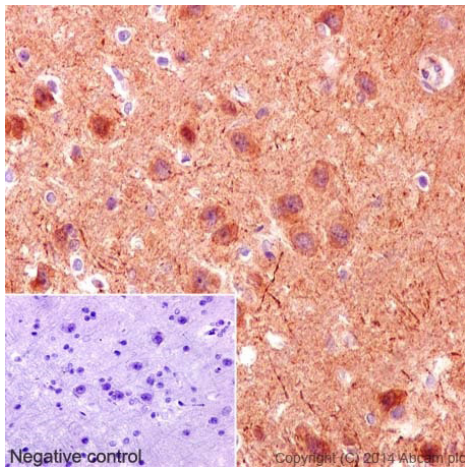
HRP goat anti-rabbit (H+L) at 1/1000 dilution

Predicted band size: 68 kDa

Observed band size: 74 kDa

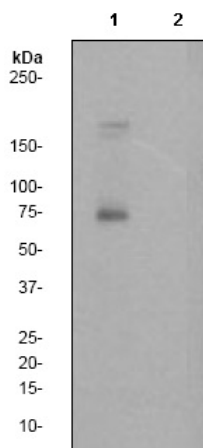
Blocking buffer: 5% NFDm/TBST

Dilution buffer: 5% NFDm/TBST



Immunohistochemical staining of paraffin embedded rat cerebral cortex with purified ab76129 at a working dilution of 1 in 100. The secondary antibody used is a HRP goat anti-rabbit IgG (ab97051), used at a dilution of 1/500. The sample is counter-stained with hematoxylin. Antigen retrieval was performed using Tris-EDTA buffer, pH 9.0. PBS was used instead of the primary antibody as the negative control, and is shown in the inset.

Immunohistochemistry (Formalin/PFA-fixed paraffin-embedded sections) - Anti-PKC zeta (phospho T410) + PKC lambda (phospho T412) antibody [EP1491Y] (ab76129)



Western blot - Anti-PKC zeta (phospho T410) + PKC lambda (phospho T412) antibody [EP1491Y] (ab76129)

All lanes : Anti-PKC zeta (phospho T410) + PKC lambda (phospho T412) antibody [EP1491Y] (ab76129) at 1/2000 dilution (unpurified)

Lane 1 : 293 cell lysates, untreated

Lane 2 : 293 cell lysates, treated with AP

Lysates/proteins at 10 µg per lane.

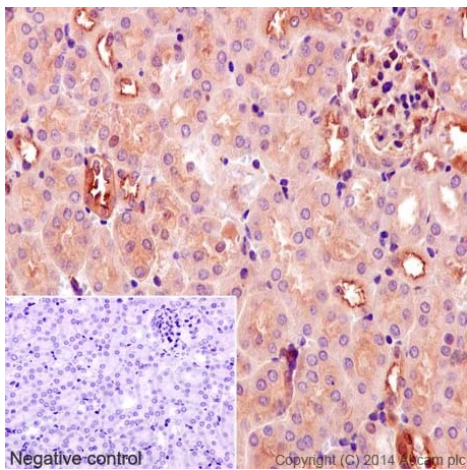
Secondary

All lanes : goat anti-rabbit-HRP at 1/1000 dilution

Predicted band size: 68 kDa

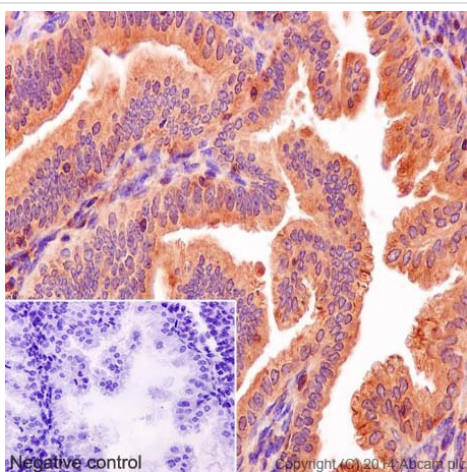
Observed band size: 68 kDa

Additional bands at: 165 kDa, 170 kDa. We are unsure as to the identity of these extra bands.



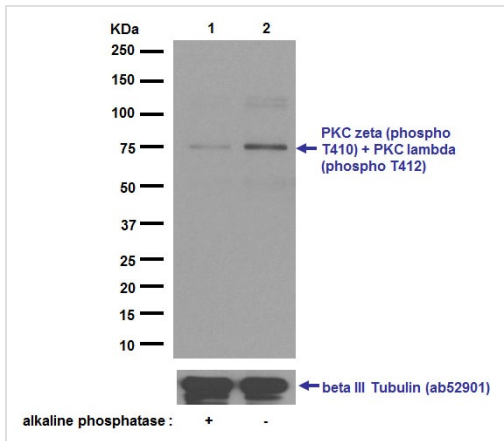
Immunohistochemical staining of paraffin embedded mouse kidney with purified ab76129 at a working dilution of 1 in 100. The secondary antibody used is a HRP goat anti-rabbit IgG (ab97051), used at a dilution of 1/500. The sample is counter-stained with hematoxylin. Antigen retrieval was performed using Tris-EDTA buffer, pH 9.0. PBS was used instead of the primary antibody as the negative control, and is shown in the inset.

Immunohistochemistry (Formalin/PFA-fixed paraffin-embedded sections) - Anti-PKC zeta (phospho T410) + PKC lambda (phospho T412) antibody [EP1491Y] (ab76129)



Immunohistochemical staining of paraffin embedded human endometrium with purified ab76129 at a working dilution of 1 in 100. The secondary antibody used is a HRP goat anti-rabbit IgG (ab97051), used at a dilution of 1/500. The sample is counter-stained with hematoxylin. Antigen retrieval was performed using Tris-EDTA buffer, pH 9.0. PBS was used instead of the primary antibody as the negative control, and is shown in the inset.

Immunohistochemistry (Formalin/PFA-fixed paraffin-embedded sections) - Anti-PKC zeta (phospho T410) + PKC lambda (phospho T412) antibody [EP1491Y] (ab76129)



Western blot - Anti-PKC zeta (phospho T410) + PKC lambda (phospho T412) antibody [EP1491Y] (ab76129)

All lanes : Anti-PKC zeta (phospho T410) + PKC lambda (phospho T412) antibody [EP1491Y] (ab76129) at 1/20000 dilution (purified)

Lane 1 : Untreated HeLa cells

Lane 2 : HeLa cells treated with alkaline phosphatase

Lysates/proteins at 10 µg per lane.

Secondary

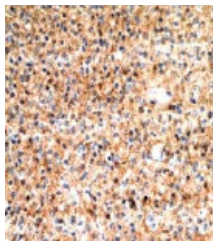
All lanes : HRP goat anti-rabbit (H+L) at 1/1000 dilution

Predicted band size: 68 kDa

Additional bands at: 74 kDa. We are unsure as to the identity of these extra bands.

Blocking buffer: 5% NFD/MTBST

Dilution buffer: 5% NFD/MTBST



Immunohistochemical staining of PKC zeta in human brain with unpurified ab76129 at 1/100 dilution.

Immunohistochemistry (Formalin/PFA-fixed paraffin-embedded sections) - Anti-PKC zeta (phospho T410) + PKC lambda (phospho T412) antibody [EP1491Y] (ab76129)

Please note: All products are "FOR RESEARCH USE ONLY AND ARE NOT INTENDED FOR DIAGNOSTIC OR THERAPEUTIC USE"

Our Promise to you: Quality guaranteed and expert technical support

- Replacement or refund for products not performing as stated on the datasheet
- Valid for 12 months from date of delivery

- Response to your inquiry within 24 hours
- We provide support in Chinese, English, French, German, Japanese and Spanish
- Extensive multi-media technical resources to help you
- We investigate all quality concerns to ensure our products perform to the highest standards

If the product does not perform as described on this datasheet, we will offer a refund or replacement. For full details of the Abpromise, please visit <http://www.abcam.com/abpromise> or contact our technical team.

Terms and conditions

- Guarantee only valid for products bought direct from Abcam or one of our authorized distributors