

Product datasheet

Anti-PLA2R antibody ab80054

★★★★★ 1 Abreviews 2 References 1 Image

Overview

| | |
|----------------------------|---|
| Product name | Anti-PLA2R antibody |
| Description | Rabbit polyclonal to PLA2R |
| Host species | Rabbit |
| Tested applications | Suitable for: IHC-Fr, WB |
| Species reactivity | Reacts with: Human Predicted to work with: Rabbit, Cow |
| Immunogen | Synthetic peptide derived from the C terminal domain of human PLA2R |
| General notes | We are constantly working hard to ensure we provide our customers with best in class antibodies. As a result, we are pleased to offer this antibody in a purified format as of 23rd June 2017. The following lots are still unpurified and still in stock as of 23rd June 2017 - GR3173938-1, GR3173938-3, GR3173938-4, GR3173938-5, GR306201-4, GR306201-5, GR3173938-2, GR306201-3, GR306201-2, GR281777-4. Lot numbers other than GR3173938-1, GR3173938-3, GR3173938-4, GR3173938-5, GR306201-4, GR306201-5, GR3173938-2, GR306201-3, GR306201-2, GR281777-4 will be purified. Please note that the dilutions may need to be adjusted accordingly. Purified antibodies have the advantage of being enriched for the fraction of immunoglobulin that specifically reacts with the target antigen and for having a reduction of serum proteins. |

Properties

| | |
|-----------------------------|---|
| Form | Liquid |
| Storage instructions | Shipped at 4°C. Upon delivery aliquot and store at -20°C. Avoid freeze / thaw cycles. |
| Storage buffer | Preservative: None Constituents: Whole serum |
| Purity | Protein A purified |
| Clonality | Polyclonal |
| Isotype | IgG |

Applications

Our [Abpromise guarantee](#) covers the use of **ab80054** in the following tested applications.

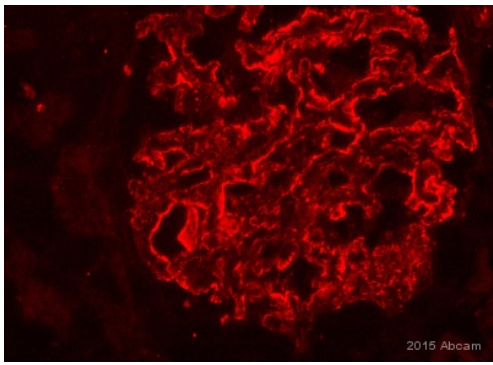
The application notes include recommended starting dilutions; optimal dilutions/concentrations should be determined by the end user.

| Application | Abreviews | Notes |
|-------------|-----------|---|
| IHC-Fr | ★★★★★ | 1/100 - 1/1000. |
| WB | | 1/500 - 1/5000. Predicted molecular weight: 169 kDa. Can be blocked with PLA2R peptide (ab176432) . |

Target

| | |
|---|---|
| Function | Receptor for secretory phospholipase A2 (sPLA2). Acts as a receptor for phospholipase sPLA2-IB/PLA2G1B but not sPLA2-IIA/PLA2G2A. Also able to bind to snake PA2-like toxins. Although its precise function remains unclear, binding of sPLA2 to its receptor participates in both positive and negative regulation of sPLA2 functions as well as clearance of sPLA2. Binding of sPLA2-IB/PLA2G1B induces various effects depending on the cell type, such as activation of the mitogen-activated protein kinase (MAPK) cascade to induce cell proliferation, the production of lipid mediators, selective release of arachidonic acid in bone marrow-derived mast cells. In neutrophils, binding of sPLA2-IB/PLA2G1B can activate p38 MAPK to stimulate elastase release and cell adhesion. May be involved in responses in proinflammatory cytokine productions during endotoxic shock. Also has endocytic properties and rapidly internalizes sPLA2 ligands, which is particularly important for the clearance of extracellular sPLA2s to protect their potent enzymatic activities. The soluble secretory phospholipase A2 receptor form is circulating and acts as a negative regulator of sPLA2 functions by blocking the biological functions of sPLA2-IB/PLA2G1B. |
| Tissue specificity | Present in lung macrophage (at protein level). Highly expressed in kidney. Also expressed in pancreas, amnion, choriodecidua and placenta. Isoform 2 is expressed at much lower level. |
| Sequence similarities | Contains 8 C-type lectin domains. Contains 1 fibronectin type-II domain. Contains 1 ricin B-type lectin domain. |
| Domain | C-type lectin domains 3-5 mediate the interaction with phospholipase PLA2G1B. The endocytosis signal probably mediates endocytosis via clathrin-coated pits. |
| Post-translational modifications | The secretory phospholipase A2 receptor form may be produced by the action of metalloproteinases. It contains all extracellular domains and only lacks transmembrane and cytosolic regions. It is however unclear whether this form is produced by proteolytic cleavage as suggested by some experiments, or by alternative splicing, as in the case of isoform 2 that shares all characteristics of secretory phospholipase A2 receptor form. |
| Cellular localization | Secreted and Cell membrane. |

Images



ab50084 staining PLA2R in Human renal tissue sections by Immunohistochemistry (IHC-Fr - frozen sections). Tissue was fixed with MTM. Samples were incubated with primary antibody (1/100 in BSA) for 2 hours at 25°C.

Immunohistochemistry (Frozen sections) - Anti-PLA2R antibody (ab80054)

This image is courtesy of an Abreview submitted by Ashwani Kumar Verma.

Please note: All products are "FOR RESEARCH USE ONLY AND ARE NOT INTENDED FOR DIAGNOSTIC OR THERAPEUTIC USE"

Our Abpromise to you: Quality guaranteed and expert technical support

- Replacement or refund for products not performing as stated on the datasheet
- Valid for 12 months from date of delivery
- Response to your inquiry within 24 hours
- We provide support in Chinese, English, French, German, Japanese and Spanish
- Extensive multi-media technical resources to help you
- We investigate all quality concerns to ensure our products perform to the highest standards

If the product does not perform as described on this datasheet, we will offer a refund or replacement. For full details of the Abpromise, please visit <http://www.abcam.com/abpromise> or contact our technical team.

Terms and conditions

- Guarantee only valid for products bought direct from Abcam or one of our authorized distributors