


Product datasheet

Anti-PPP2R5A antibody ab1084

[1 References](#) [1 Image](#)

Overview

Product name	Anti-PPP2R5A antibody
Description	Goat polyclonal to PPP2R5A
Host species	Goat
Tested applications	Suitable for: WB
Species reactivity	Reacts with: Human Predicted to work with: Rat 
Immunogen	Synthetic peptide: AYNMHSILSNTSAE, corresponding to C terminal amino acids 473-486 of Human PPP2R5A. Run BLAST with ExPASy Run BLAST with NCBI
Positive control	Human Heart and Muscle lysate.
General notes	GenBank Accession Number – NP_006234.

Properties

Form	Liquid
Storage instructions	Shipped at 4°C. Upon delivery aliquot and store at -20°C or -80°C. Avoid repeated freeze / thaw cycles.
Storage buffer	Preservative: 0.02% Sodium Azide Constituents: 0.5% BSA, Tris buffered saline, pH 7.3
Purity	Immunogen affinity purified
Purification notes	Purified from goat serum by ammonium sulphate precipitation followed by antigen affinity chromatography using the immunizing peptide.
Clonality	Polyclonal
Isotype	IgG

Applications

Our [Abpromise guarantee](#) covers the use of **ab1084** in the following tested applications.

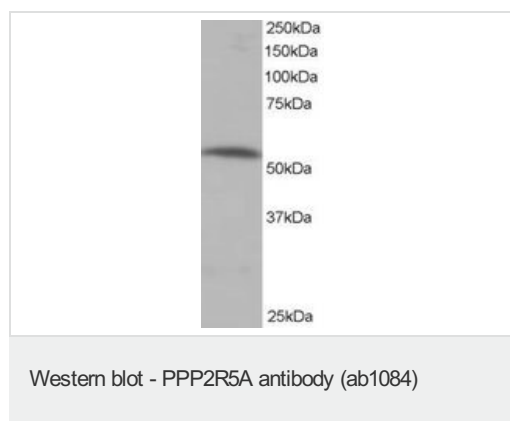
The application notes include recommended starting dilutions; optimal dilutions/concentrations should be determined by the end user.

Application	Abreviews	Notes
WB		Use a concentration of 0.5 - 2 µg/ml. Detects a band of approximately 55 kDa (predicted molecular weight: 55 kDa). Can be blocked with Human PPP2R5A peptide (ab22797) .

Target

Function	The B regulatory subunit might modulate substrate selectivity and catalytic activity, and also might direct the localization of the catalytic enzyme to a particular subcellular compartment.
Tissue specificity	Widely expressed with the highest expression in heart and skeletal muscle.
Sequence similarities	Belongs to the phosphatase 2A regulatory subunit B56 family.
Post-translational modifications	Phosphorylated on serine residues.
Cellular localization	Cytoplasm. Nucleus. Chromosome > centromere. From mitotic prophase to metaphase, localizes at the inner centromere between a pair of sister kinetochores. Decreased expression at the onset of anaphase.

Images



ab1084 (0.5 µg/ml) staining PPP2R5A in human muscle whole tissue lysate (35 µg in RIPA buffer). Incubated with primary antibody for 1 hour and detected by chemiluminescence.

Please note: All products are "FOR RESEARCH USE ONLY AND ARE NOT INTENDED FOR DIAGNOSTIC OR THERAPEUTIC USE"

Our Abpromise to you: Quality guaranteed and expert technical support

- Replacement or refund for products not performing as stated on the datasheet
- Valid for 12 months from date of delivery
- Response to your inquiry within 24 hours
- We provide support in Chinese, English, French, German, Japanese and Spanish
- Extensive multi-media technical resources to help you
- We investigate all quality concerns to ensure our products perform to the highest standards

If the product does not perform as described on this datasheet, we will offer a refund or replacement. For full details of the Abpromise, please visit <http://www.abcam.com/abpromise> or contact our technical team.

Terms and conditions

- Guarantee only valid for products bought direct from Abcam or one of our authorized distributors