

Product datasheet

Anti-PRAMEF3 antibody ab112909

1 Image

Overview

<b>Product name</b>	Anti-PRAMEF3 antibody
<b>Description</b>	Rabbit polyclonal to PRAMEF3
<b>Host species</b>	Rabbit
<b>Tested applications</b>	<b>Suitable for:</b> WB
<b>Species reactivity</b>	<b>Reacts with:</b> Human
<b>Immunogen</b>	Synthetic peptide conjugated to KLH, corresponding to a region within C terminal amino acids 427-457 of Human PRAMEF3.
<b>Positive control</b>	NCI-H460 cell line lysate

Properties

<b>Form</b>	Liquid
<b>Storage instructions</b>	Shipped at 4°C. Store at 4°C (up to 6 months). Store at -20°C long term.
<b>Storage buffer</b>	Preservative: 0.09% Sodium azide Constituent: 99% PBS
<b>Purity</b>	Immunogen affinity purified
<b>Purification notes</b>	ab112909 is purified through a protein A column, followed by peptide affinity purification.
<b>Clonality</b>	Polyclonal
<b>Isotype</b>	IgG

Applications

Our [Abpromise guarantee](#) covers the use of **ab112909** in the following tested applications.

The application notes include recommended starting dilutions; optimal dilutions/concentrations should be determined by the end user.

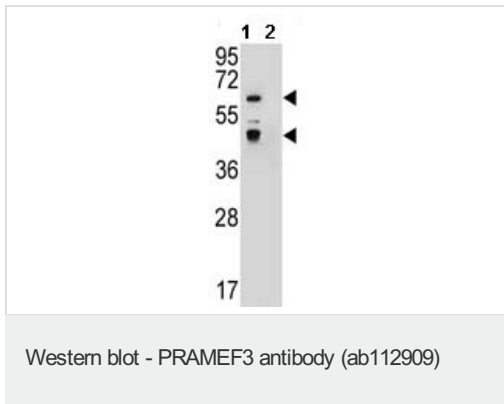
Application	Abreviews	Notes
WB		1/100 - 1/500. Predicted molecular weight: 55 kDa.

Target

## Relevance

Belongs to the PRAME family. Contains 2 LRR (leucine-rich) repeats.

## Images



**All lanes :** Anti-PRAMEF3 antibody  
(ab112909) at 1/60 dilution

**Lane 1 :** NCI-H460 cell line lysate

**Lane 2 :** NCI-H460 cell line lysate with  
blocking peptide

Lysates/proteins at 12.5 µg per lane.

**Predicted band size:** 55 kDa

**Please note:** All products are "FOR RESEARCH USE ONLY AND ARE NOT INTENDED FOR DIAGNOSTIC OR THERAPEUTIC USE"

## Our Abpromise to you: Quality guaranteed and expert technical support

- Replacement or refund for products not performing as stated on the datasheet
- Valid for 12 months from date of delivery
- Response to your inquiry within 24 hours
- We provide support in Chinese, English, French, German, Japanese and Spanish
- Extensive multi-media technical resources to help you
- We investigate all quality concerns to ensure our products perform to the highest standards

If the product does not perform as described on this datasheet, we will offer a refund or replacement. For full details of the Abpromise, please visit <http://www.abcam.com/abpromise> or contact our technical team.

## Terms and conditions

- Guarantee only valid for products bought direct from Abcam or one of our authorized distributors