

## Product datasheet

# Anti-PROX1 antibody ab38692

★★★★★ 8 Abreviews 7 References 2 Images

### Overview

---

<b>Product name</b>	Anti-PROX1 antibody
<b>Description</b>	Rabbit polyclonal to PROX1
<b>Host species</b>	Rabbit
<b>Specificity</b>	We have had mixed results for use of this antibody in IHC-P. The abReview below from an external researcher reports good staining with this antibody with human heart tissue, but we have had mixed results with this antibody in internal QC testing in IHC-P. Thus, we are removing IHC-P as a guaranteed application and welcome any feedback from customers who have used this antibody in IHC-P.
<b>Tested applications</b>	<b>Suitable for:</b> WB, IHC-P
<b>Species reactivity</b>	<b>Reacts with:</b> Mouse, Rat, Human
<b>Immunogen</b>	Synthetic peptide conjugated to KLH derived from within residues 150 - 250 of Human PROX1. Read Abcam's proprietary immunogen policy (Peptide available as <a href="#">ab38691</a> .)
<b>Positive control</b>	This antibody gave a positive signal in the following human whole cell lysates : HepG2 and SHSY-5Y. HEK293 human whole cell lysate is a negative control lysate. IHC-P: Human heart tissue.

### Properties

---

<b>Form</b>	Liquid
<b>Storage instructions</b>	Shipped at 4°C. Store at +4°C short term (1-2 weeks). Upon delivery aliquot. Store at -20°C or -80°C. Avoid freeze / thaw cycle.
<b>Storage buffer</b>	Preservative: 0.02% Sodium Azide Constituents: 1% BSA, PBS, pH 7.4
<b>Purity</b>	Immunogen affinity purified
<b>Clonality</b>	Polyclonal
<b>Isotype</b>	IgG

### Applications

---

Our [Abpromise guarantee](#) covers the use of **ab38692** in the following tested applications.

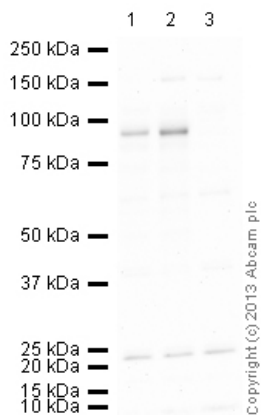
The application notes include recommended starting dilutions; optimal dilutions/concentrations should be determined by the end user.

Application	Abreviews	Notes
WB	★★★★★	Use a concentration of 2 µg/ml. Detects a band of approximately 105 kDa (predicted molecular weight: 83 kDa).
IHC-P	★★★★★	Use at an assay dependent concentration.

## Target

<b>Function</b>	Transcription factor involved in developmental processes such as cell fate determination, gene transcriptional regulation and progenitor cell regulation in a number of organs. Plays a critical role in embryonic development and functions as a key regulatory protein in neurogenesis and the development of the heart, eye lens, liver, pancreas and the lymphatic system. Involved in the regulation of the circadian rhythm. Represses: transcription of the retinoid-related orphan receptor RORG, transcriptional activator activity of RORA and RORG and the expression of RORA/G-target genes including core clock components: ARNTL/BMAL1, NPAS2 and CRY1 and metabolic genes: AVPR1A and ELOVL3.
<b>Tissue specificity</b>	Most actively expressed in the developing lens. Detected also in embryonic brain, lung, liver and kidney. In adult, it is more abundant in heart and liver than in brain, skeletal muscle, kidney and pancreas.
<b>Sequence similarities</b>	Belongs to the Prospero homeobox family. Contains 1 Prospero-type homeobox DNA-binding domain.
<b>Domain</b>	The prospero-type homeobox DNA-binding domain is essential for repression of RORG transcriptional activator activity.
<b>Cellular localization</b>	Nucleus. RORG promotes its nuclear localization.
<b>Form</b>	Prox1 is a specific and required regulator of the development of the lymphatic system and that the vascular and lymphatic systems develop independently. Sox18 directly activates Prox1 transcription by binding to its proximal promoter.

## Images



Western blot - Anti-PROX1 antibody (ab38692)

**All lanes :** Anti-PROX1 antibody (ab38692)

at 1 µg/ml (3% Milk Block)

**Lane 1 :** HepG2 (Human) Whole Cell Lysate

([ab52257](#))

**Lane 2 :** SHSY-5Y (Human neuroblastoma

cell line) Whole Cell Lysate ([ab45968](#))

**Lane 3 :** HEK293 (Human) Whole Cell Lysate

([ab52256](#))

Lysates/proteins at 10 µg per lane.

### Secondary

**All lanes :** Goat Anti-Rabbit IgG H&L (HRP)

preadsorbed ([ab97080](#)) at 1/10000 dilution

Developed using the ECL technique.

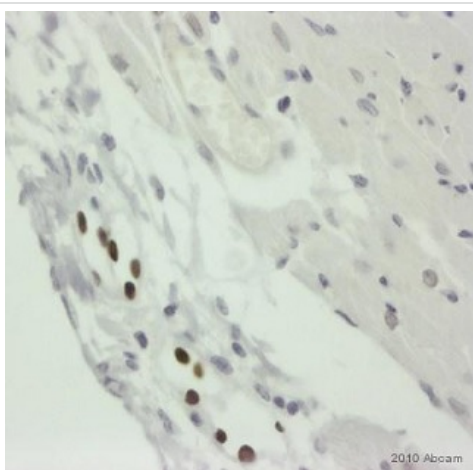
Performed under reducing conditions.

**Predicted band size:** 83 kDa

**Observed band size:** 95 kDa

**Additional bands at:** 25 kDa. We are unsure as to the identity of these extra bands.

**Exposure time:** 4 minutes



Immunohistochemistry (Formalin/PFA-fixed paraffin-embedded sections) - Anti-PROX1 antibody (ab38692)

Formaldehyde-fixed, paraffin-embedded

human heart tissue stained for PROX1 using

[ab388692](#) at 1/250 dilution in

immunohistochemical analysis. Incubation with

primary antibody was performed for 45

minutes at 20°C. Goat anti-rabbit/mouse HRO

polymer was used as a secondary antibody.

Heat mediated antigen retrieval was

performed. Tissue sections were blocked with

peroxidase for 5 minutes followed by a 10

minute protein block.

### **Our Abpromise to you: Quality guaranteed and expert technical support**

---

- Replacement or refund for products not performing as stated on the datasheet
- Valid for 12 months from date of delivery
- Response to your inquiry within 24 hours
  
- We provide support in Chinese, English, French, German, Japanese and Spanish
- Extensive multi-media technical resources to help you
- We investigate all quality concerns to ensure our products perform to the highest standards

If the product does not perform as described on this datasheet, we will offer a refund or replacement. For full details of the Abpromise, please visit <http://www.abcam.com/abpromise> or contact our technical team.

### **Terms and conditions**

---

- Guarantee only valid for products bought direct from Abcam or one of our authorized distributors