

Product datasheet

Anti-PSMB10 antibody ab106922

2 Images

Overview

<b>Product name</b>	Anti-PSMB10 antibody
<b>Description</b>	Goat polyclonal to PSMB10
<b>Tested applications</b>	<b>Suitable for:</b> WB, IHC-P
<b>Species reactivity</b>	<b>Reacts with:</b> Human
<b>Immunogen</b>	Synthetic peptide corresponding to Human PSMB10 aa 231-242 (internal sequence). Sequence: C-PTEPVKRSGRYH  Database link: <a href="#">P40306</a>  <a href="#">Run BLAST with</a> <a href="#">Run BLAST with</a>
<b>Positive control</b>	Human Liver, Lung and Lymph Node lysates

Properties

<b>Form</b>	Liquid
<b>Storage instructions</b>	Shipped at 4°C. Upon delivery aliquot and store at -20°C. Avoid freeze / thaw cycles.
<b>Storage buffer</b>	Preservative: 0.02% Sodium Azide Constituents: 0.5% BSA, Tris buffered saline, pH 7.3
<b>Purity</b>	Immunogen affinity purified
<b>Purification notes</b>	ab106922 was purified from goat serum by ammonium sulphate precipitation followed by antigen affinity chromatography using the immunizing peptide.
<b>Clonality</b>	Polyclonal
<b>Isotype</b>	IgG

Applications

Our [Abpromise guarantee](#) covers the use of **ab106922** in the following tested applications.

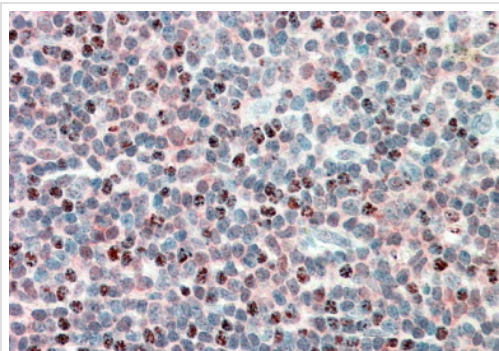
The application notes include recommended starting dilutions; optimal dilutions/concentrations should be determined by the end user.

Application	Abreviews	Notes
WB		Use a concentration of 0.3 - 1 µg/ml. Detects a band of approximately 26 kDa (predicted molecular weight: 29 kDa).
IHC-P		Use a concentration of 5 - 10 µg/ml. Perform heat mediated antigen retrieval with citrate buffer pH 6 before commencing with IHC staining protocol.

## Target

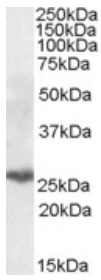
<b>Function</b>	The proteasome is a multicatalytic proteinase complex which is characterized by its ability to cleave peptides with Arg, Phe, Tyr, Leu, and Glu adjacent to the leaving group at neutral or slightly basic pH. The proteasome has an ATP-dependent proteolytic activity. This subunit is involved in antigen processing to generate class I binding peptides.
<b>Sequence similarities</b>	Belongs to the peptidase T1B family.
<b>Developmental stage</b>	Highly expressed in immature dendritic cells (at protein level).
<b>Post-translational modifications</b>	Autocleaved. The resulting N-terminal Thr residue of the mature subunit is responsible for the nucleophile proteolytic activity.
<b>Cellular localization</b>	Cytoplasm. Nucleus.

## Images



ab106922 (5µg/ml) staining of paraffin embedded Human Tonsil following teamed antigen retrieval with citrate buffer pH 6 and AP-staining shows defined staining in a subset of cells.

Immunohistochemistry (Formalin/PFA-fixed paraffin-embedded sections) - Anti-PSMB10 antibody (ab106922)



250kDa  
150kDa  
100kDa  
75kDa  
50kDa  
37kDa  
25kDa  
20kDa  
15kDa

Western blot - PSMB10 antibody (ab106922)

Anti-PSMB10 antibody (ab106922) at 0.3  
µg/ml + Human lung lysate in RIPA buffer at 35  
µg  
Developed using the ECL technique

**Predicted band size** : 29 kDa  
Primary incubation was 1 hour.

**Please note:** All products are "FOR RESEARCH USE ONLY AND ARE NOT INTENDED FOR DIAGNOSTIC OR THERAPEUTIC USE"

### Our Abpromise to you: Quality guaranteed and expert technical support

- Replacement or refund for products not performing as stated on the datasheet
- Valid for 12 months from date of delivery
- Response to your inquiry within 24 hours
- We provide support in Chinese, English, French, German, Japanese and Spanish
- Extensive multi-media technical resources to help you
- We investigate all quality concerns to ensure our products perform to the highest standards

If the product does not perform as described on this datasheet, we will offer a refund or replacement. For full details of the Abpromise, please visit <http://www.abcam.com/abpromise> or contact our technical team.

### Terms and conditions

- Guarantee only valid for products bought direct from Abcam or one of our authorized distributors