

Product datasheet

Anti-PTP rho antibody [AFT20] ab75521

2 Images

Overview

Product name	Anti-PTP rho antibody [AFT20]
Description	Mouse monoclonal [AFT20] to PTP rho
Tested applications	Suitable for: WB, ELISA
Species reactivity	Reacts with: Human
Immunogen	Recombinant full length protein corresponding to Human PTP rho.
Positive control	Bosc23 cell transfected with Myc/His/R PTP rho.

Properties

Form	Liquid
Storage instructions	Shipped at 4°C. Upon delivery aliquot. Store at -20°C. Avoid freeze / thaw cycle. Stable for 12 months at -20°C.
Storage buffer	Preservative: 0.03% Sodium azide Constituents: 0.87% Sodium chloride, HEPES, 0.01% BSA, 50% Glycerol
Purity	Ammonium Sulphate Precipitation
Clonality	Monoclonal
Clone number	AFT20
Isotype	IgG2a
Light chain type	kappa

Applications

Our [Abpromise guarantee](#) covers the use of **ab75521** in the following tested applications.

The application notes include recommended starting dilutions; optimal dilutions/concentrations should be determined by the end user.

Application	Abreviews	Notes
WB		1/2000. Predicted molecular weight: 164 kDa.
ELISA		Use at an assay dependent dilution.

Target

Function

May be involved in both signal transduction and cellular adhesion in the CNS.

Tissue specificity

Expressed in colon, lung, heart and testis, as well as in fetal and adult brain. Not detected in muscle and peripheral blood leukocytes.

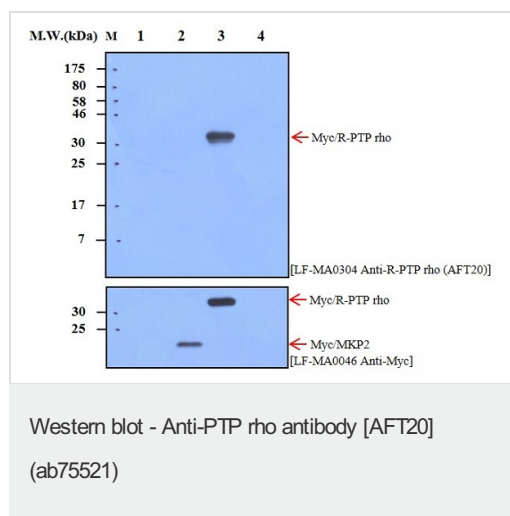
Sequence similarities

Belongs to the protein-tyrosine phosphatase family. Receptor class 2B subfamily.
Contains 4 fibronectin type-III domains.
Contains 1 Ig-like C2-type (immunoglobulin-like) domain.
Contains 1 MAM domain.
Contains 2 tyrosine-protein phosphatase domains.

Cellular localization

Membrane.

Images



All lanes : Anti-PTP rho antibody [AFT20] (ab75521) at 1/10000 dilution

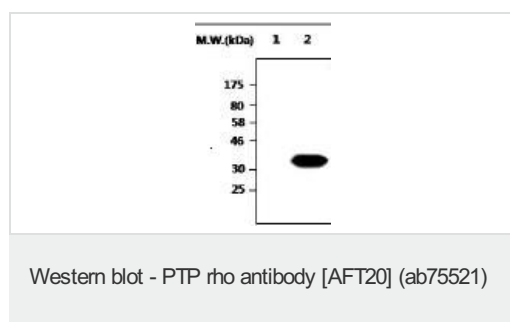
Lane 1 : Bosc23 Cell Lysate

Lane 2 : Bosc23 Cell Lysate Transfected with Myc/MKP2

Lane 3 : Bosc23 Cell Lysate Transfected with Myc/R-PTP rho

Lane 4 : Bosc23 Cell Lysate Transfected with GFP/Ub

Predicted band size : 164 kDa



All lanes : Anti-PTP rho antibody [AFT20] (ab75521) at 1/2000 dilution

Lane 1 : Bosc23 cell lysate

Lane 2 : Bosc23 cell lysate transfected with Myc/His/R PTP rho (887 - 1169 aa)

Predicted band size : 164 kDa

Observed band size : 40 kDa

Please note: All products are "FOR RESEARCH USE ONLY AND ARE NOT INTENDED FOR DIAGNOSTIC OR THERAPEUTIC USE"

Our Abpromise to you: Quality guaranteed and expert technical support

- Replacement or refund for products not performing as stated on the datasheet

- Valid for 12 months from date of delivery
- Response to your inquiry within 24 hours

- We provide support in Chinese, English, French, German, Japanese and Spanish
- Extensive multi-media technical resources to help you
- We investigate all quality concerns to ensure our products perform to the highest standards

If the product does not perform as described on this datasheet, we will offer a refund or replacement. For full details of the Abpromise, please visit <http://www.abcam.com/abpromise> or contact our technical team.

Terms and conditions

- Guarantee only valid for products bought direct from Abcam or one of our authorized distributors