

Product datasheet

Anti-PTRF antibody ab88213

2 Images

Overview

Product name	Anti-PTRF antibody
Description	Rabbit polyclonal to PTRF
Tested applications	Suitable for: WB, ICC/IF
Species reactivity	Reacts with: Mouse
Immunogen	Synthetic peptide conjugated to KLH derived from within residues 1 - 100 of Mouse PTRF. Read Abcam's proprietary immunogen policy (Peptide available as ab90995 .)
Positive control	This antibody gave a positive signal in the following mouse whole cell lysates: NIH3T3; MEF1.

Properties

Form	Liquid
Storage instructions	Shipped at 4°C. Store at +4°C short term (1-2 weeks). Upon delivery aliquot. Store at -20°C or -80°C. Avoid freeze / thaw cycle.
Storage buffer	Preservative: 0.02% Sodium Azide Constituents: 1% BSA, PBS, pH 7.4
Purity	Immunogen affinity purified
Clonality	Polyclonal
Isotype	IgG

Applications

Our [Abpromise guarantee](#) covers the use of **ab88213** in the following tested applications.

The application notes include recommended starting dilutions; optimal dilutions/concentrations should be determined by the end user.

Application	Abreviews	Notes
WB		Use a concentration of 1 µg/ml. Detects a band of approximately 56 kDa (predicted molecular weight: 44 kDa).
ICC/IF		Use a concentration of 5 µg/ml.

Target

Function

Plays an important role in caveolae formation and organization. Required for the sequestration of mobile caveolin into immobile caveolae. Termination of transcription by RNA polymerase I involves pausing of transcription by TTF1, and the dissociation of the transcription complex, releasing pre-rRNA and RNA polymerase I from the template. PTRF is required for dissociation of the ternary transcription complex.

Involvement in disease

Congenital generalized lipodystrophy 4

Sequence similarities

Belongs to the PTRF/SDPR family.

Post-translational modifications

Phosphorylated. Present in active and inactive forms. Changes in phosphorylation pattern may alter activity.

Five truncated forms are found in the caveolae. These are thought to be the result of proteolysis and may be phosphorylation-dependent.

Cellular localization

Membrane > caveola. Cell membrane. Microsome. Endoplasmic reticulum. Cytoplasm > cytosol. Mitochondrion. Nucleus. Found at the surface of the caveolae. Also found in the plasma membrane, microsomal and cytosolic fractions and at a low level in the mitochondrial and nuclear fractions. Translocates to the cytoplasm from the caveolae upon insulin stimulation. CAV1 is necessary to recruit it to the cell membrane (By similarity). Co-localizes with CAV1 in lipid rafts in adipocytes.

Images



Western blot - Anti-PTRF antibody (ab88213)

All lanes : Anti-PTRF antibody (ab88213) at 1 µg/ml

Lane 1 : NIH 3T3 (Mouse embryonic fibroblast cell line) Whole Cell Lysate

Lane 2 : MEF1 (Mouse embryonic fibroblast cell line) Whole Cell Lysate

Lysates/proteins at 10 µg per lane.

Secondary

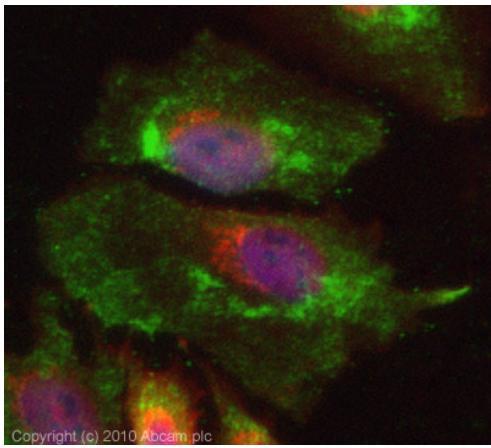
Goat polyclonal to Rabbit IgG - H&L - Pre-Adsorbed (HRP) at 1/3000 dilution
Developed using the ECL technique

Performed under reducing conditions.

Predicted band size : 44 kDa

Observed band size : 56 kDa

Exposure time : 1 minute



Immunocytochemistry/ Immunofluorescence - PTRF antibody (ab88213)

ICC/IF image of ab88213 stained HeLa cells. The cells were 4% PFA fixed (10 min), permeabilised in 0.1% PBS-Tween (20 min) and incubated with the antibody (ab88213, 5µg/ml) for 1h at room temperature. 1%BSA / 10% normal Goat serum / 0.3M glycine was used to block non-specific protein-protein interactions. The secondary antibody (green) was Alexa Fluor® 488 Goat anti-Rabbit IgG (H+L) used at a 1/1000 dilution for 1h. Alexa Fluor® 594 WGA was used to label plasma membranes (red). DAPI was used to stain the cell nuclei (blue).

Please note: All products are "FOR RESEARCH USE ONLY AND ARE NOT INTENDED FOR DIAGNOSTIC OR THERAPEUTIC USE"

Our Abpromise to you: Quality guaranteed and expert technical support

- Replacement or refund for products not performing as stated on the datasheet
- Valid for 12 months from date of delivery
- Response to your inquiry within 24 hours
- We provide support in Chinese, English, French, German, Japanese and Spanish
- Extensive multi-media technical resources to help you
- We investigate all quality concerns to ensure our products perform to the highest standards

If the product does not perform as described on this datasheet, we will offer a refund or replacement. For full details of the Abpromise, please visit <http://www.abcam.com/abpromise> or contact our technical team.

Terms and conditions

- Guarantee only valid for products bought direct from Abcam or one of our authorized distributors