


Product datasheet

Anti-Pea3 antibody ab98068

1 Image

Overview

Product name	Anti-Pea3 antibody
Description	Rabbit polyclonal to Pea3
Host species	Rabbit
Tested applications	Suitable for: WB
Species reactivity	Reacts with: Human Predicted to work with: Mouse, Rat, Horse, Chimpanzee, Macaque monkey, Gorilla 
Immunogen	Synthetic peptide conjugated to KLH derived from within residues 100 - 200 of Human Pea3. Read Abcam's proprietary immunogen policy
Positive control	This antibody gave a positive signal in the following whole cell lysates: MCF7; K562; Jurkat; HepG2.

Properties

Form	Liquid
Storage instructions	Shipped at 4°C. Store at +4°C short term (1-2 weeks). Upon delivery aliquot. Store at -20°C or -80°C. Avoid freeze / thaw cycle.
Storage buffer	pH: 7.40 Preservative: 0.02% Sodium azide Constituents: PBS, 1% BSA Note: Batches of this product that have a concentration < 1mg/ml may have BSA added as a stabilising agent. If you would like information about the formulation of a specific lot, please contact our scientific support team who will be happy to help.
Purity	Immunogen affinity purified
Clonality	Polyclonal
Isotype	IgG

Applications

Our [Abpromise guarantee](#) covers the use of **ab98068** in the following tested applications.

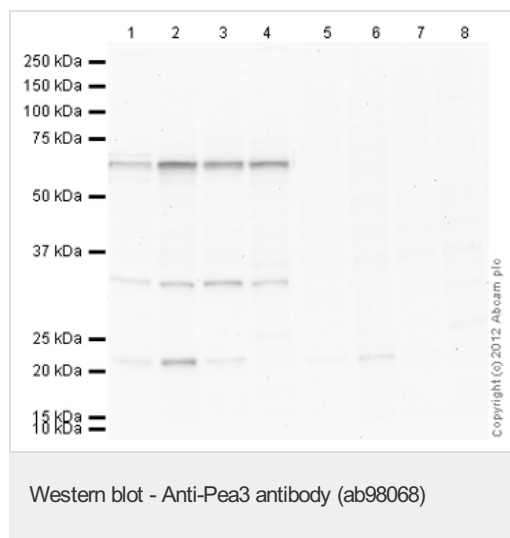
The application notes include recommended starting dilutions; optimal dilutions/concentrations should be determined by the end user.

Application	Abreviews	Notes
WB		Use a concentration of 1 µg/ml. Detects a band of approximately 64 kDa (predicted molecular weight: 54 kDa).

Target

Function	Transcriptional activator that binds to the enhancer of the adenovirus E1A gene; the core-binding sequence is 5'[AC]GGA[AT]GT-3'.
Sequence similarities	Belongs to the ETS family. Contains 1 ETS DNA-binding domain.
Post-translational modifications	Sumoylated; enhanced upon ERK/MAP kinase pathway activation, it positively regulates the transcriptional activator capacity. Sumoylation at Lys-96 probably requires phosphorylation at Ser-101. Transiently polysumoylated and desumoylated by SENP1. Sumoylation is a prerequisite to polyubiquitination which in turn increases proteasomal-mediated degradation. Probably polyubiquitinated by RNF4 and deubiquitinated by USP2.
Cellular localization	Nucleus.

Images



All lanes : Anti-Pea3 antibody (ab98068) at 1 µg/ml

Lane 1 : MCF7 (Human breast

adenocarcinoma cell line) Whole Cell Lysate

Lane 2 : K562 (Human erythromyeloblastoid leukemia cell line) Whole Cell Lysate

Lane 3 : Jurkat (Human T cell lymphoblast-like cell line) Whole Cell Lysate

Lane 4 : HepG2 (Human hepatocellular liver carcinoma cell line) Whole Cell Lysate

Lane 5 : MCF7 (Human breast adenocarcinoma cell line) Whole Cell Lysate with Immunising peptide at 1 µg/ml

Lane 6 : K562 (Human erythromyeloblastoid leukemia cell line) Whole Cell Lysate with Immunising peptide at 1 µg/ml

Lane 7 : Jurkat (Human T cell lymphoblast-like cell line) Whole Cell Lysate with Immunising peptide at 1 µg/ml

Lane 8 : HepG2 (Human hepatocellular liver carcinoma cell line) Whole Cell Lysate with Immunising peptide at 1 µg/ml

Lysates/proteins at 20 µg per lane.

Secondary

All lanes : Goat Anti-Rabbit IgG H&L (HRP)
preadsorbed ([ab97080](#)) at 1/5000 dilution

Developed using the ECL technique.

Performed under reducing conditions.

Predicted band size: 54 kDa

Observed band size: 64 kDa

Additional bands at: 22 kDa, 33 kDa. We are unsure as to the identity of these extra bands.

Exposure time: 2 minutes

The predicted molecular weight of Pea3 is 54 kDa (SwissProt), however we expect to observe a banding pattern around 65 kDa. Abcam welcomes customer feedback and would appreciate any comments regarding this product and the data presented above.

Please note: All products are "FOR RESEARCH USE ONLY AND ARE NOT INTENDED FOR DIAGNOSTIC OR THERAPEUTIC USE"

Our Abpromise to you: Quality guaranteed and expert technical support

- Replacement or refund for products not performing as stated on the datasheet
- Valid for 12 months from date of delivery
- Response to your inquiry within 24 hours
- We provide support in Chinese, English, French, German, Japanese and Spanish
- Extensive multi-media technical resources to help you
- We investigate all quality concerns to ensure our products perform to the highest standards

If the product does not perform as described on this datasheet, we will offer a refund or replacement. For full details of the Abpromise, please visit <http://www.abcam.com/abpromise> or contact our technical team.

Terms and conditions

- Guarantee only valid for products bought direct from Abcam or one of our authorized distributors