

Product datasheet

Anti-Prickle 2 antibody ab65964

★ ★ ★ ★ ★ 1 Abreviews 1 Image

Overview

Product name	Anti-Prickle 2 antibody
Description	Rabbit polyclonal to Prickle 2
Host species	Rabbit
Tested applications	Suitable for: WB
Species reactivity	Reacts with: Human Predicted to work with: Mouse
Immunogen	Synthetic peptide conjugated to KLH derived from within residues 700 - 800 of Human Prickle 2. Read Abcam's proprietary immunogen policy (Peptide available as ab90635 .)
Positive control	This antibody gave a positive signal in the following whole cell lysates: Y79; WERI.

Properties

Form	Liquid
Storage instructions	Shipped at 4°C. Store at +4°C short term (1-2 weeks). Upon delivery aliquot. Store at -20°C or -80°C. Avoid freeze / thaw cycle.
Storage buffer	Preservative: 0.02% Sodium Azide Constituents: 1% BSA, PBS, pH 7.4
Purity	Immunogen affinity purified
Clonality	Polyclonal
Isotype	IgG

Applications

Our [Abpromise guarantee](#) covers the use of **ab65964** in the following tested applications.

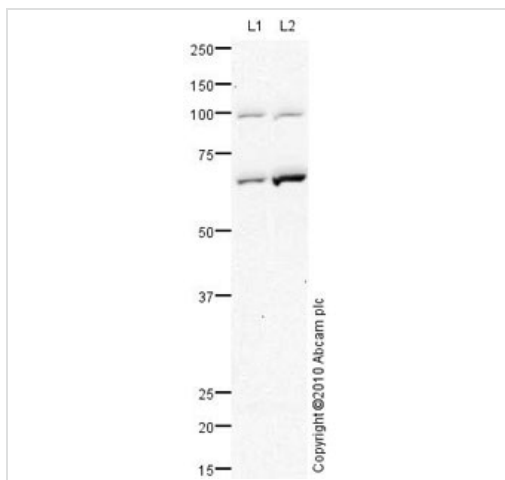
The application notes include recommended starting dilutions; optimal dilutions/concentrations should be determined by the end user.

Application	Abreviews	Notes
WB		Use a concentration of 1 µg/ml. Detects a band of approximately 96 kDa (predicted molecular weight: 96 kDa).

Target

Tissue specificity	Expressed in brain, eye and testis. Additionally in fetal brain, adult cartilage, pancreatic islet, gastric cancer and uterus tumors.
Involvement in disease	Epilepsy, progressive myoclonic 5
Sequence similarities	Belongs to the prickle / espinas / testin family. Contains 3 LIM zinc-binding domains. Contains 1 PET domain.
Cellular localization	Nucleus membrane.

Images



Western blot - Prickle 2 antibody (ab65964)

All lanes : Anti-Prickle 2 antibody (ab65964)
at 1 µg/ml

Lane 1 : Y79 (Human retinoblastoma cell line)
Whole Cell Lysate

Lane 2 : WERI (Human Retinoblastoma)
Whole Cell Lysate

Lysates/proteins at 10 µg per lane.

Secondary

All lanes : Goat polyclonal to Rabbit IgG -
H&L - Pre-Adsorbed (HRP) at 1/3000 dilution

Developed using the ECL technique.

Performed under reducing conditions.

Predicted band size: 96 kDa

Observed band size: 96 kDa

Additional bands at: 65 kDa. We are unsure
as to the identity of these extra bands.

Exposure time: 10 minutes

Please note: All products are "FOR RESEARCH USE ONLY AND ARE NOT INTENDED FOR DIAGNOSTIC OR THERAPEUTIC USE"

Our Promise to you: Quality guaranteed and expert technical support

- Replacement or refund for products not performing as stated on the datasheet
- Valid for 12 months from date of delivery

- Response to your inquiry within 24 hours
- We provide support in Chinese, English, French, German, Japanese and Spanish
- Extensive multi-media technical resources to help you
- We investigate all quality concerns to ensure our products perform to the highest standards

If the product does not perform as described on this datasheet, we will offer a refund or replacement. For full details of the Abpromise, please visit <http://www.abcam.com/abpromise> or contact our technical team.

Terms and conditions

- Guarantee only valid for products bought direct from Abcam or one of our authorized distributors