


Product datasheet

Anti-Prolactin Receptor antibody ab98015

1 Image

Overview

Product name	Anti-Prolactin Receptor antibody
Description	Rabbit polyclonal to Prolactin Receptor
Tested applications	Suitable for: WB
Species reactivity	Reacts with: Mouse Predicted to work with: Rat 
Immunogen	Synthetic peptide conjugated to KLH derived from within residues 500 - 600 of Mouse Prolactin Receptor. Read Abcam's proprietary immunogen policy
Positive control	This antibody gave a positive signal in the following tissue lysates: Mouse Placenta; Mouse Kidney; Mouse Liver.

Properties

Form	Liquid
Storage instructions	Shipped at 4°C. Store at +4°C short term (1-2 weeks). Upon delivery aliquot. Store at -20°C or -80°C. Avoid freeze / thaw cycle.
Storage buffer	pH: 7.40 Preservative: 0.02% Sodium azide Constituent: PBS Note: Batches of this product that have a concentration < 1mg/ml may have BSA added as a stabilising agent. If you would like information about the formulation of a specific lot, please contact our scientific support team who will be happy to help.
Purity	Immunogen affinity purified
Clonality	Polyclonal
Isotype	IgG

Applications

Our [Abpromise guarantee](#) covers the use of **ab98015** in the following tested applications.

The application notes include recommended starting dilutions; optimal dilutions/concentrations should be determined by the end user.

Application	Abreviews	Notes
-------------	-----------	-------

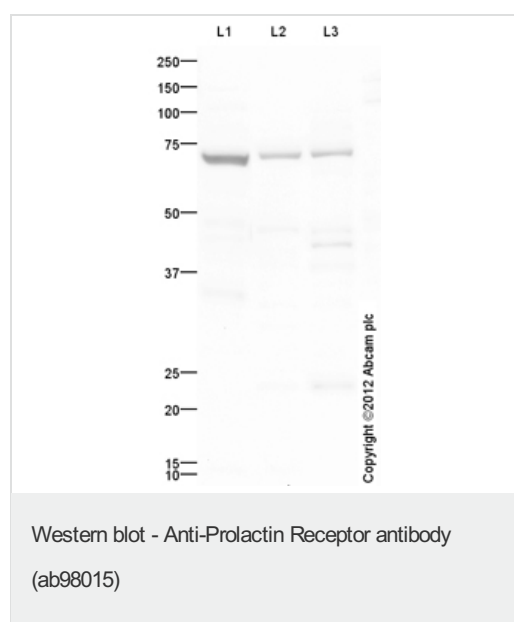
Application	Abreviews	Notes
-------------	-----------	-------

WB Use a concentration of 1 µg/ml. Detects a band of approximately 68 kDa (predicted molecular weight: 68 kDa).

Target

Function	This is a receptor for the anterior pituitary hormone prolactin (PRL). Isoform 4 is unable to transduce prolactin signaling. Isoform 6 is unable to transduce prolactin signaling.
Tissue specificity	Expressed in breast, placenta, kidney, liver and pancreas.
Sequence similarities	Belongs to the type I cytokine receptor family. Type 1 subfamily. Contains 2 fibronectin type-III domains.
Domain	The WSXWS motif appears to be necessary for proper protein folding and thereby efficient intracellular transport and cell-surface receptor binding. The box 1 motif is required for JAK interaction and/or activation.
Cellular localization	Secreted and Membrane.

Anti-Prolactin Receptor antibody images



All lanes : Anti-Prolactin Receptor antibody (ab98015) at 1 µg/ml

Lane 1 : Mouse Placenta Tissue Lysate

Lane 2 : Kidney (Mouse) Tissue Lysate

Lane 3 : Liver (Mouse) Tissue Lysate

Lysates/proteins at 10 µg per lane.

Secondary

Goat Anti-Rabbit IgG H&L (HRP) preadsorbed

(ab97080) at 1/5000 dilution

Developed using the ECL technique

Performed under reducing conditions.

Predicted band size : 68 kDa

Observed band size : 68 kDa

Additional bands at : 43 kDa. We are

unsure as to the identity of these extra bands.

Exposure time : 2 minutes

Please note: All products are "FOR RESEARCH USE ONLY AND ARE NOT INTENDED FOR DIAGNOSTIC OR THERAPEUTIC USE"

Our Abpromise to you: Quality guaranteed and expert technical support

- Replacement or refund for products not performing as stated on the datasheet
- Valid for 12 months from date of delivery
- Response to your inquiry within 24 hours

- We provide support in Chinese, English, French, German, Japanese and Spanish
- Extensive multi-media technical resources to help you
- We investigate all quality concerns to ensure our products perform to the highest standards

If the product does not perform as described on this datasheet, we will offer a refund or replacement. For full details of the Abpromise, please visit <http://www.abcam.com/abpromise> or contact our technical team.

Terms and conditions

- Guarantee only valid for products bought direct from Abcam or one of our authorized distributors