

Product datasheet

# Anti-Prostatic Acid Phosphatase antibody [PASE/4LJ], prediluted ab915

1 Image

Overview

<b>Product name</b>	Anti-Prostatic Acid Phosphatase antibody [PASE/4LJ], prediluted
<b>Description</b>	Mouse monoclonal [PASE/4LJ] to Prostatic Acid Phosphatase, prediluted
<b>Specificity</b>	This antibody is specific for PSAP. This antibody can be used to identify the prostatic origin of metastatic tumors such as metastatic carcinoma in bone, rectum and lymph node.
<b>Tested applications</b>	<b>Suitable for:</b> IHC-P, IHC-Fr
<b>Species reactivity</b>	<b>Reacts with:</b> Human
<b>Immunogen</b>	Prostatic acid phosphatase purified from human seminal plasma.
<b>General notes</b>	PSAP is Prostatic Acid Phosphatase.

Properties

<b>Form</b>	Liquid
<b>Storage instructions</b>	Shipped at 4°C. Store at +4°C. Do Not Freeze.
<b>Storage buffer</b>	Preservative: 0.05% Sodium Azide Constituents: Inert stabilizer
<b>Clonality</b>	Monoclonal
<b>Clone number</b>	PASE/4LJ
<b>Myeloma</b>	unknown
<b>Isotype</b>	IgG1

Applications

Our [Abpromise guarantee](#) covers the use of **ab915** in the following tested applications.

The application notes include recommended starting dilutions; optimal dilutions/concentrations should be determined by the end user.

Application	Abreviews	Notes
IHC-P		

Application	Abreviews	Notes
-------------	-----------	-------

IHC-Fr

### Application notes

This antibody has been pretitrated and quality controlled to work on formalin-fixed paraffin-embedded as well as acetone fixed cryostat tissue sections.  
 No further titration is required.  
 We suggest an incubation period of 30-60 minutes at room temperature.  
 However, depending upon the fixation conditions and the staining system employed, optimal incubation should be determined by the user.

### Target

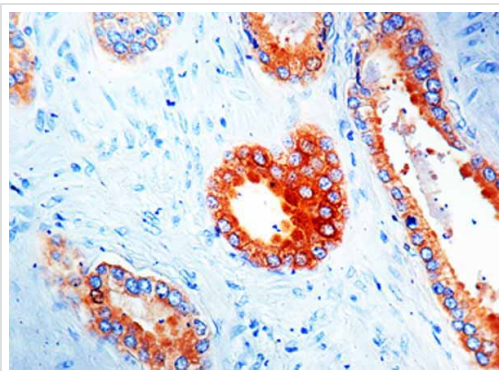
#### Sequence similarities

Belongs to the histidine acid phosphatase family.

#### Cellular localization

Secreted and Lysosome membrane. Predominantly localized in the plasma membrane but also detected in intracellular vesicles.

### Images



Immunohistochemical analysis of formalin-fixed paraffin-embedded human prostate carcinoma tissue sections, labelling PSAP with ab915.

Immunohistochemistry (Formalin/PFA-fixed paraffin-embedded sections) - Anti-Prostatic Acid Phosphatase antibody [PASE/4LJ], prediluted (ab915)

**Please note:** All products are "FOR RESEARCH USE ONLY AND ARE NOT INTENDED FOR DIAGNOSTIC OR THERAPEUTIC USE"

### Our Abpromise to you: Quality guaranteed and expert technical support

- Replacement or refund for products not performing as stated on the datasheet
- Valid for 12 months from date of delivery
- Response to your inquiry within 24 hours
- We provide support in Chinese, English, French, German, Japanese and Spanish
- Extensive multi-media technical resources to help you
- We investigate all quality concerns to ensure our products perform to the highest standards

If the product does not perform as described on this datasheet, we will offer a refund or replacement. For full details of the Abpromise, please visit <http://www.abcam.com/abpromise> or contact our technical team.

## Terms and conditions

---

- Guarantee only valid for products bought direct from Abcam or one of our authorized distributors