

Product datasheet

Anti-RAB40C antibody ab104785

1 Image

Overview

Product name	Anti-RAB40C antibody
Description	Rabbit polyclonal to RAB40C
Host species	Rabbit
Tested applications	Suitable for: WB
Species reactivity	Reacts with: Human Predicted to work with: Mouse, Rat, Goat, Horse, Chicken, Guinea pig, Cow, Zebrafish
Immunogen	Synthetic peptide corresponding to a region within the N terminal amino acids 35-84 (QDGAAESPYA YSNGIDYKTT TILLDGRVR LELWDTSGQG RFCTIFRSYS) of Human RAB40C (NP_066991). Run BLAST with ExPASy Run BLAST with NCBI
Positive control	Human fetal muscle lysate

Properties

Form	Liquid
Storage instructions	Shipped at 4°C. Upon delivery aliquot and store at -20°C. Avoid repeated freeze / thaw cycles.
Storage buffer	Preservative: None Constituents: 2% Sucrose, PBS
Purity	Immunogen affinity purified
Clonality	Polyclonal
Isotype	IgG

Applications

Our [Abpromise guarantee](#) covers the use of **ab104785** in the following tested applications.

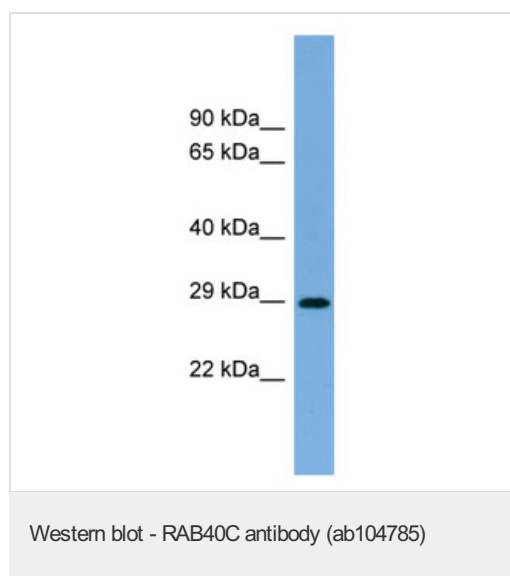
The application notes include recommended starting dilutions; optimal dilutions/concentrations should be determined by the end user.

Application	Abreviews	Notes
WB		Use a concentration of 1 µg/ml. Predicted molecular weight: 31 kDa. Good results were obtained when blocked with 5% non-fat dry milk in 0.05% PBS-T.

Target

Function	Probable substrate-recognition component of a SCF-like ECS (Elongin-Cullin-SOCS-box protein) E3 ubiquitin ligase complex which mediates the ubiquitination and subsequent proteasomal degradation of target proteins.
Pathway	Protein modification; protein ubiquitination.
Sequence similarities	Belongs to the small GTPase superfamily. Rab family. Contains 1 SOCS box domain.
Domain	The SOCS box domain mediates the interaction with the Elongin BC complex, an adapter module in different E3 ubiquitin ligase complexes.
Cellular localization	Cell membrane.

Images



Anti-RAB40C antibody (ab104785) at 1 µg/ml
+ Human fetal muscle lysate at 10 µg

Secondary

HRP conjugated anti-Rabbit IgG at 1/50000
dilution

Predicted band size: 31 kDa

Gel concentration: 12%

Please note: All products are "FOR RESEARCH USE ONLY AND ARE NOT INTENDED FOR DIAGNOSTIC OR THERAPEUTIC USE"

Our Abpromise to you: Quality guaranteed and expert technical support

- Replacement or refund for products not performing as stated on the datasheet
- Valid for 12 months from date of delivery
- Response to your inquiry within 24 hours
- We provide support in Chinese, English, French, German, Japanese and Spanish
- Extensive multi-media technical resources to help you
- We investigate all quality concerns to ensure our products perform to the highest standards

If the product does not perform as described on this datasheet, we will offer a refund or replacement. For full details of the Abpromise, please visit <http://www.abcam.com/abpromise> or contact our technical team.

Terms and conditions

- Guarantee only valid for products bought direct from Abcam or one of our authorized distributors