


Product datasheet

Anti-RBM17 antibody ab114968

2 Images

Overview

Product name	Anti-RBM17 antibody
Description	Rabbit polyclonal to RBM17
Host species	Rabbit
Tested applications	Suitable for: IP, IHC-P Unsuitable for: WB
Species reactivity	Reacts with: Human Predicted to work with: Mouse, Rat, Guinea pig, Cow, Dog, Pig, Xenopus laevis, Chimpanzee, Rhesus monkey, Orangutan 
Immunogen	Synthetic peptide, corresponding to a region within amino acids 25-75 of Human RBM17 (NP_116294.1).
Positive control	HeLa whole cell lysate.

Properties

Form	Liquid
Storage instructions	Shipped at 4°C. Upon delivery aliquot and store at -20°C. Avoid freeze / thaw cycles.
Storage buffer	Preservative: 0.09% Sodium azide Constituent: 99% Tris citrate/phosphate Note: pH 7 to 8.
Purity	Immunogen affinity purified
Clonality	Polyclonal
Isotype	IgG

Applications

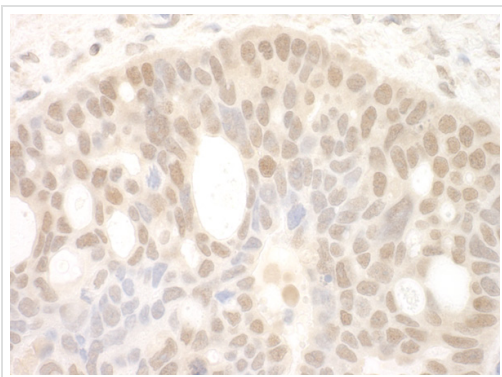
Our [Abpromise guarantee](#) covers the use of **ab114968** in the following tested applications.

The application notes include recommended starting dilutions; optimal dilutions/concentrations should be determined by the end user.

Application	Abreviews	Notes
IP		Use at 2-5 µg/mg of lysate.

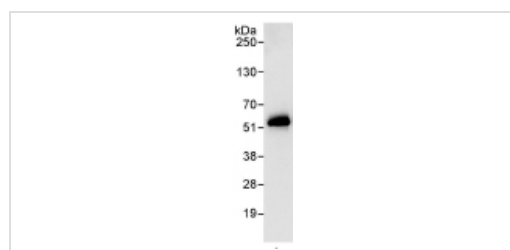
Application	Abreviews	Notes
IHC-P		1/500 - 1/2000. Perform heat mediated antigen retrieval with citrate buffer pH 6 before commencing with IHC staining protocol.
Application notes		Is unsuitable for WB.
Target		
Function		Splice factor that binds to the single stranded 3'AG at the exon/intron border and promotes its utilization in the second catalytic step. Involved in the regulation of alternative splicing and the utilization of cryptic splice sites. Promotes the utilization of a cryptic splice site created by the beta-110 mutation in the HBB gene. The resulting frameshift leads to sickle cell anemia.
Sequence similarities		Contains 1 G-patch domain. Contains 1 RRM (RNA recognition motif) domain.
Cellular localization		Nucleus.

Images



Immunohistochemistry (Formalin/PFA-fixed paraffin-embedded sections) analysis of human ovarian carcinoma tissue labelling RBM17 with ab114968 at 1/1000 (1µg/ml).
Detection: DAB.

Immunohistochemistry (Formalin/PFA-fixed paraffin-embedded sections) - Anti-RBM17 antibody (ab114968)



Detection of RBM17 by Western Blot of Immunoprecipitate.
anti-RBM17 at 0.4µg/ml staining RBM17 in HeLa whole cell lysate immunoprecipitated using ab114968 at 3µg/mg lysate (1 mg/IP; 20% of IP loaded/lane).

Immunoprecipitation - Anti-RBM17 antibody (ab114968)

Detection: Chemiluminescence with exposure time of 10 seconds.

Please note: All products are "FOR RESEARCH USE ONLY AND ARE NOT INTENDED FOR DIAGNOSTIC OR THERAPEUTIC USE"

Our Abpromise to you: Quality guaranteed and expert technical support

- Replacement or refund for products not performing as stated on the datasheet
- Valid for 12 months from date of delivery
- Response to your inquiry within 24 hours

- We provide support in Chinese, English, French, German, Japanese and Spanish
- Extensive multi-media technical resources to help you
- We investigate all quality concerns to ensure our products perform to the highest standards

If the product does not perform as described on this datasheet, we will offer a refund or replacement. For full details of the Abpromise, please visit <http://www.abcam.com/abpromise> or contact our technical team.

Terms and conditions

- Guarantee only valid for products bought direct from Abcam or one of our authorized distributors